

Informations Rapides



1 août 2012 - n° 197 **CONJONCTURE**

■ Turnover in the wholesale trade and business services - May 2012

In May 2012, the turnover rose in the wholesale trade, in transportation and storage and in information and communication

Every index in this issue is in value, seasonally and working-day adjusted.

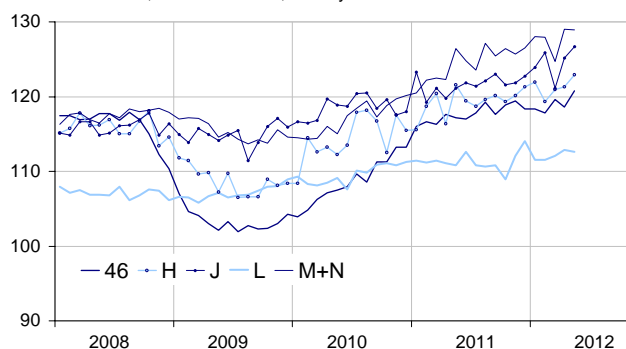
In May 2012, the turnover grew in the *wholesale trade* (+1.9 %), in *transportation and storage* (+1.3 %) and in *information and communication* (+1.2 %). It slightly declined in *real estate activities* (-0.3 %) and was broadly stable in *business support activities* (-0.1 %).

Quarter on quarter (q-o-q), the turnover increased in the *wholesale trade* (+1.3 %) and in *transportation and storage* (+0.7 %). It was broadly stable in *real estate activities* (+0.2 %), in *information and communication* (+0.1 %) and in *business support activities* (+0.1 %).

Year on year (y-o-y), the turnover grew in *business support activities* (+3.1 %), in *information and communication* (+3.0 %), in the *wholesale trade* (+2.3 %), in *transportation and storage* (+1.9 %) and in *real estate activities* (+1.3 %).

Wholesale trade and business service

Turnover indices, value SA-WDA, Base year 2005



Source : INSEE

Revisions

The SA-WDA evolution in April has been revised by +0.2 point in *real estate activities* and in *information and communication*. The variations, respectively

announced at +0.5 % and +3.2 % last month, have been corrected at +0.7 % and +3.4 %. In the same period, the SA-WDA evolution has been revised by +0.1 point in the *wholesale trade* and in *transportation and storage*.

Monthly turnover indices

SA-WDA value, Base year 2005

Classification NAF rev. 2	Weight	Change in %			
		May/ April	April/ March	q-o-q (1)	y-o-y (2)
46 Wholesale trade, except of motor vehicles and motorcycles	1000	1.9	-0.8	1.3	2.3
Wholesale on a fee or contract basis	166	3.5	1.9	1.3	6.8
Wholesale of agricultural raw materials and live animals	62	7.9	-7.4	4.0	1.9
Wholesale of food, beverages and tobacco	183	1.3	1.2	2.3	3.5
Wholesale of household goods	173	0.1	0.2	0.1	0.5
Wholesale of professional equipment goods	215	0.7	-1.6	-0.6	1.1
Other specialised wholesale	193	1.0	-2.5	2.1	-0.1
H Transportation and storage	1000	1.3	0.3	0.7	1.9
J Information and communication	1000	1.2	3.4	0.1	3.0
L Real estate activities	1000	-0.3	0.7	0.2	1.3
M+N Business support activities	1000	-0.1	3.4	0.1	3.1
M Professional, scientific and technical activities	626	0.2	2.2	0.6	3.8
N Administrative and support service activities	374	-0.4	5.7	-0.9	1.7

(1) Quarter-on-quarter: last three months / three previous months.

(2) Year-on-year: last three months / three same months of the previous year.

The codes correspond to different levels of aggregation of the classification NAF rev. 2.

Source: INSEE