

Informations *Rapides*



1 février 2013 - n° 30 **CONJONCTURE**

■ Turnover in the wholesale trade and business services - November 2012

In November 2012, the turnover fell in the wholesale trade and in transportation and storage

Every index in this issue is in value, seasonally and working-day adjusted (SA-WDA).

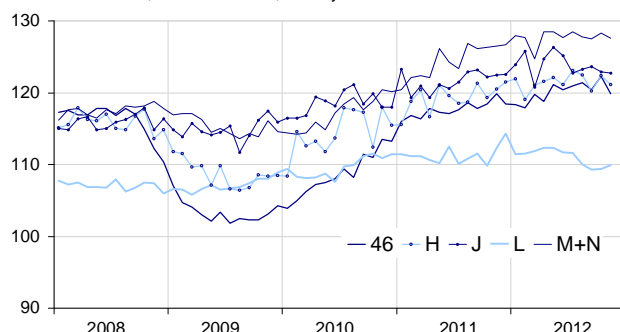
In November 2012, the turnover downturned in the *wholesale trade* (−2.0%) and in *transportation and storage* (−1.1%). It declined slightly in *business support activities* (−0.5%) and in *information and communication* (−0.2%). On the contrary, it grew in *real estate activities* (+0.5 %).

Over the quarter (q-o-q), the turnover fell off in *real estate activities* (−1.4%), in *transportation and storage* (−0.8%) and in *information and communication* (−0.5%). It was broadly steady in *business support activities* (−0.2%) and stable in the *wholesale trade* (0.0%).

Year-on-year, the turnover went up in the *wholesale trade* (+1.8%), in *business support activities* (+1.2%), in *transportation and storage* (+0.7%) and, to a lesser extent, in *information and communication* (+0.4 %). On the contrary, it decreased in *real estate activities* (−1.5 %).

Wholesale trade and business services

Turnover indexes, SA-WDA value, Base year 2005



Source : INSEE

Revisions

The evolution in October has been revised by −0.7

point in *real estate activities*. The variation, announced at +0.8% last month, has been corrected at +0.1%. In the same period, the evolution has been revised by +0.1 point in *transportation and storage* and in *business support activities* and by −0.1 point in *information and communication*.

Variation of the turnover in the wholesale trade and business services

SA-WDA value, Base year 2005

NACE Classification	Weight	Change in %			
		Nov./ Oct.	Oct./ Sept.	q-o-q (1)	y-o-y (2)
46 Wholesale trade, except for motor vehicles and motorcycles	1000	−2.0	1.6	0.0	1.8
461 Wholesale on a fee or contract basis	166	0.6	−0.7	0.4	4.3
462 Wholesale of agricultural raw materials and live animals	62	−1.1	1.8	5.9	7.1
463 Wholesale of food, beverages and tobacco	183	−3.5	4.3	0.3	2.1
464 Wholesale of household goods	173	−2.5	2.9	−1.0	−1.3
465 and 466 Wholesale of professional equipment goods	215	−3.1	0.1	−2.2	0.5
467 Other specialised wholesale	193	−1.3	0.8	−0.3	1.3
H Transportation and storage	1000	−1.1	1.8	−0.8	0.7
J Information and communication	1000	−0.2	−0.6	−0.5	0.4
L Real estate activities	1000	0.5	0.1	−1.4	−1.5
M+N Business support activities	1000	−0.5	0.6	−0.2	1.2
M Professional, scientific and technical activities	626	0.2	−0.3	0.3	2.1
N Administrative and support service activities	374	−1.8	2.5	−1.0	−0.5

(1) Quarter-on-quarter: last three months / three previous months.

(2) Year-on-year: last three months / same three months of the previous year.

Source : INSEE