

# Informations Rapides



21 décembre 2012 - n° 317 CONJONCTURE

## ■ Turnover in the retail trade and personal services - October 2012

### In October 2012, the volume of sales grew in household services and in the trade and repair of motor vehicles and motorcycles

**Warning : the term "volume of sales" will be used from now to describe results displayed in this publication.**

Every index in this issue is in volume, seasonally and working-day adjusted (SA-WDA).

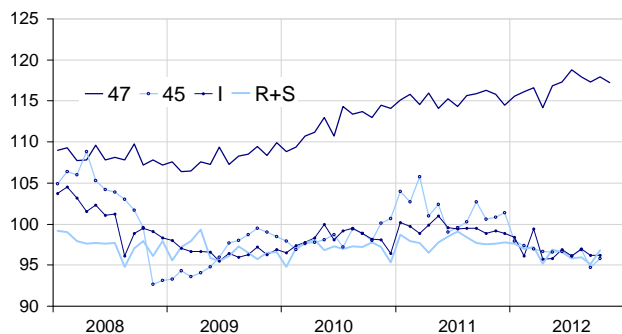
In October 2012, the volume of sales bounced compared to September in *household services* (+1.8%) and in the *trade and repair of motor vehicles and motorcycles* (+1.2%). It also rose in the *retail trade, except for motor vehicles and motorcycles* (+0.5%) whereas it was steady in *accommodation and food service activities* (0.0%).

Over the third quarter (q-o-q), the volume of sales declined in the *trade and repair of motor vehicles and motorcycles* (-0.7%) and in *household services* (-0.5%). It was broadly stable in *accommodation and food service activities* (+0.2%) and in the *retail trade, except for motor vehicles and motorcycles* (+0.1%).

Year-on-year, the volume of sales fell sharply in the *trade and repair of motor vehicles and motorcycles* (-5.3%). It also decreased in *accommodation and food services activities* (-2.9%) and in *household services* (-1.9%). On the contrary, it increased in the *retail trade, except for motor vehicles and motorcycles* (+1.5%).

#### Volume of sales in the retail trade and personal services

Turnover indices, SA-WDA volume, Base year 2005



Please note that the «retail trade, except for motor vehicles and motorcycles» chart (47) includes the early estimate for November 2012.

Source : INSEE

In November 2012, the volume of sales in the retail trade is expected to come down (-0.6%).

#### Revisions

The evolution in September has been revised by +0.1 point in the *trade and repair of motor vehicles and motorcycles* and by -0.1 point in the *retail trade*. These variations, announced at -2.4% and -0.4% last month, have been corrected at -2.3% and -0.5%.

#### Variation of the volume of sales in the retail trade and personal services

SA-WDA volume, Base year 2005

Classification NAF rev. 2	Weight	Change in %			
		Oct./ Sept.	Sept./ Aug.	q-o-q (1)	y-o-y (2)
<b>47 Retail trade, except for motor vehicles and motorcycles</b>	<b>1000</b>	<b>0.5</b>	<b>-0.5</b>	<b>0.1</b>	<b>1.5</b>
471 Retail sale in non-specialized stores	415	1.2	-0.5	0.5	0.5
472 to 477 Retail sale in specialized stores	545	-0.1	-0.5	-0.2	2.2
478 and 479 Retail trade not in stores	40	3.1	-1.6	0.8	0.6
<b>45 Trade and repair of motor vehicles and motorcycles</b>	<b>1000</b>	<b>1.2</b>	<b>-2.3</b>	<b>-0.7</b>	<b>-5.3</b>
<b>I Accommodation and food service activities</b>	<b>1000</b>	<b>0.0</b>	<b>-0.8</b>	<b>0.2</b>	<b>-2.9</b>
<b>R+S Household services</b>	<b>1000</b>	<b>1.8</b>	<b>-0.9</b>	<b>-0.5</b>	<b>-1.9</b>
R Arts, entertainment and recreation	472	1.8	-0.6	-0.2	-1.8
S Other service activities	528	1.7	-1.3	-0.7	-2.1

(1) Quarter-on-quarter: last three months / three previous months.

(2) Year-on-year: last three months / three same months of the previous year.

The codes correspond to different levels of aggregation of the classification NAF rev.2.

Source : INSEE

#### Variation of the volume of sales in the retail trade : early estimate\*

SA-WDA volume, Base year 2005

	Change in %	
	Nov. 2012/ Oct. 2012	Nov. 2012/ Nov. 2011
<b>47 Retail trade, except for motor vehicles and motorcycles</b>	<b>-0.6</b>	<b>1.2</b>

\* Econometric estimate from a set of sources available within 30 days after the end of the reference month

Source : INSEE