

# Informations *Rapides*



21 décembre 2012 - n° 316 **CONJONCTURE**

## ■ Turnover in the wholesale trade and business services - October 2012

### In October 2012, the turnover bounced in transportation and storage and in the wholesale trade

Every index in this issue is in value, seasonally and working-day adjusted (SA-WDA).

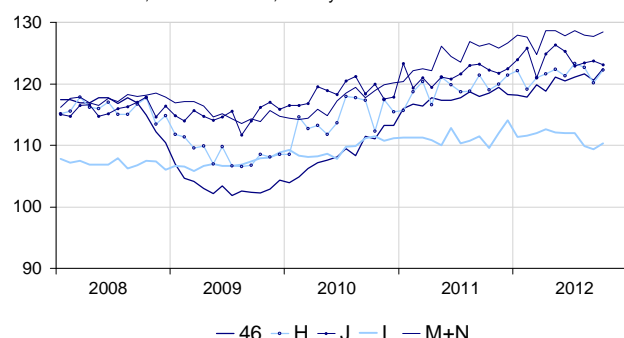
In October 2012, the turnover bounced noticeably in *transportation and storage* (+1.7 %) and in the *wholesale trade* (+1.6 %). It also grew in *real estate activities* (+0.8 %) and in *business support activities* (+0.5 %) whereas it declined in *information and communication* (–0.5 %).

Over the third quarter (q-o-q), the turnover went up by +0.6 % in the *wholesale trade*. Conversely, it fell by –1.9 % in *real estate activities*, by –1.1 % in *information and communication*, by –0.5 % in *transportation and storage* and by –0.3 % in *business support activities*.

Year-on-year, the turnover went up in the *wholesale trade* (+2.7 %), in *transportation and storage* (+1.6 %), in *business support activities* (+1.2 %), and, to a lesser extent, in *information and communication* (+0.5 %). On the contrary, it went down in *real estate activities* (–0.7 %).

#### Turnover in the wholesale trade and business services

Turnover indices, SA-WDA value, Base year 2005



Source : INSEE

#### Revisions

The evolution in September has been revised by –0.6 point in *real estate activities* and by –0.4 point in *transportation and storage*. These variations,

announced at +0.1 % and –1.6 % last month, have been corrected at –0.5 % and –2.0 %. Over the same period, the evolution has been revised by –0.1 point in the *wholesale trade* and in *business support activities*.

#### Variation of the turnover in the wholesale trade and business services

SA-WDA value, Base year 2005

Classification NAF rev. 2	Weight	Change in %			
		Oct./ Sept.	Sept./ Aug.	q-o-q (1)	y-o-y (2)
<b>46 Wholesale trade, except for motor vehicles and motorcycles</b>	<b>1000</b>	<b>1.6</b>	<b>–0.8</b>	<b>0.6</b>	<b>2.7</b>
461 Wholesale on a fee or contract basis	166	–0.7	–0.1	0.5	5.5
462 Wholesale of agricultural raw materials and live animals	62	1.6	–0.1	6.6	7.6
463 Wholesale of food, beverages and tobacco	183	4.4	–2.2	1.2	2.8
464 Wholesale of household goods	173	2.6	–1.9	–0.5	–0.5
465 and 466 Wholesale of professional equipment goods	215	0.2	0.8	–1.0	2.0
467 Other specialized wholesale	193	1.3	–1.0	0.3	1.5
<b>H Transportation and storage</b>	<b>1000</b>	<b>1.7</b>	<b>–2.0</b>	<b>–0.5</b>	<b>1.6</b>
<b>J Information and communication</b>	<b>1000</b>	<b>–0.5</b>	<b>0.2</b>	<b>–1.1</b>	<b>0.5</b>
<b>L Real estate activities</b>	<b>1000</b>	<b>0.8</b>	<b>–0.5</b>	<b>–1.9</b>	<b>–0.7</b>
<b>M+N Business support activities</b>	<b>1000</b>	<b>0.5</b>	<b>–0.2</b>	<b>–0.3</b>	<b>1.2</b>
M Professional, scientific and technical activities	626	–0.3	0.8	–0.2	2.0
N Administrative and support service activities	374	2.2	–2.0	–0.4	–0.3

(1) Quarter-on-quarter: last three months / three previous months.

(2) Year-on-year: last three months / three same months of the previous year.

The codes correspond to different levels of aggregation of the classification NAF rev. 2.

Source : INSEE