

Informations Rapides



3 novembre 2011 - n° 269 **CONJONCTURE**

■ Turnover in the wholesale trade and business services - August 2011

In August 2011, the turnover rose in business support activities and in the wholesale trade

Every index in this issue is in value, seasonally and working-day adjusted.

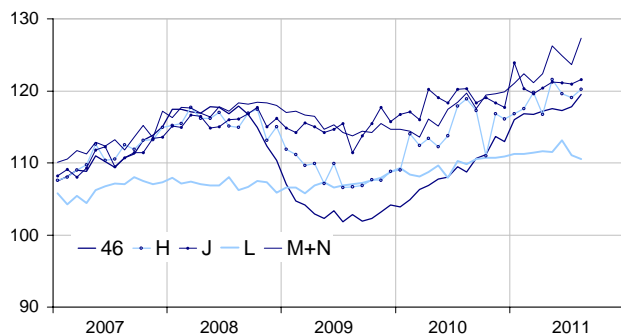
In August 2011, the turnover grew in *business support activities* (+3.0 %) and in the *wholesale trade* (+1.4 %). It also rose in *transportation and storage* (+0.9 %) and in *information and communication* (+0.6 %). Conversely, it fell in *real estate activities* (-0.5 %).

Quarter on quarter (q-o-q), the turnover rose in *business support activities* (+1.6 %), in the *wholesale trade* (+0.9 %) and in *information and communication* (+0.7 %). It was broadly stable in *transportation and storage* (+0.2 %) and in *real estate activities* (+0.1 %).

Year on year (y-o-y), the turnover picked up by 8.7 % in the *wholesale trade*. It also grew in *business support activities* (+5.7 %), in *transportation and storage* (+2.4 %), in *real estate activities* (+2.0 %) and in *information and communication* (+1.3 %).

Wholesale trade and business service

Turnover indices, value SA-WDA, Base year 2005



Source : INSEE

Revisions

The SA-WDA evolution in July has been revised by +0.5 point in *information and communication*. The increase, initially announced at -0.7 %, is corrected at -0.2 %, in particular due to the new calculation of SA-

WDA coefficients in the *telecommunications*. In the same period, the SA-WDA evolution has been revised by +0.2 point in *business support activities*, by +0.2 point in *transportation and storage*, by +0.1 in the *wholesale trade* and by +0.1 point in *real estate activities*.

Monthly turnover indices

SA-WDA value, Base year 2005

Classification NAF rev. 2	Weight	Change in %			
		Aug/ July	July/ June	q-o-q (1)	y-o-y (2)
46 Wholesale trade, except of motor vehicles and motorcycles	1000	1.4	0.4	0.9	8.7
Wholesale on a fee or contract basis	166	1.7	0.6	2.5	8.0
Wholesale of agricultural raw materials and live animals	62	-0.9	1.7	2.2	24.5
Wholesale of food, beverages and tobacco	183	2.2	-0.3	1.2	7.6
Wholesale of household goods	173	1.8	-0.6	1.3	4.2
Wholesale of professional equipment goods	215	1.6	0.4	-0.6	6.6
Other specialised wholesale	193	0.7	1.8	-0.3	11.2
H Transportation and storage	1000	0.9	-0.4	0.2	2.4
J Information and communication	1000	0.6	-0.2	0.7	1.3
L Real estate activities	1000	-0.5	-1.8	0.1	2.0
M+N Business support activities	1000	3.0	-1.0	1.6	5.7
M Professional, scientific and technical activities	626	2.7	-2.6	1.5	5.4
N Administrative and support service activities	374	3.4	1.8	1.9	6.4

(1) Quarter-on-quarter: last three months / three previous months.

(2) Year-on-year: last three months / three same months of the previous year.

The codes correspond to different levels of aggregation of the classification NAF rev. 2.

Source: INSEE