

Informations *Rapides*



9 mars 2012 - n° 64 **CONJONCTURE**

Main indicators

■ Industrial Production Indices – January 2012

In January 2012, manufacturing output slightly increased (+0.2%)

In January 2012, **manufacturing output** slightly increased in volume (+0.2%). It had decreased in December 2011 (-1.3%).

Output increased in **total industry** (+0.3%).

During the last quarter, manufacturing output was almost stable (-0.1%)...

During the last quarter (quarter-on-quarter change), output was almost stable in the manufacturing sector (-0.1%) and slightly decreased in the industry as a whole (-0.3%).

Output decreased in the “other manufacturing” (-0.6%), though it increased in the *manufacture of transport equipment* (+2.1%) and in the *manufacture of electrical, electronic equipment and machine equipment* (+0.5%).

...and remained higher than its last year's level by 0.6%

Manufacturing output increased by 0.6% (y-o-y).

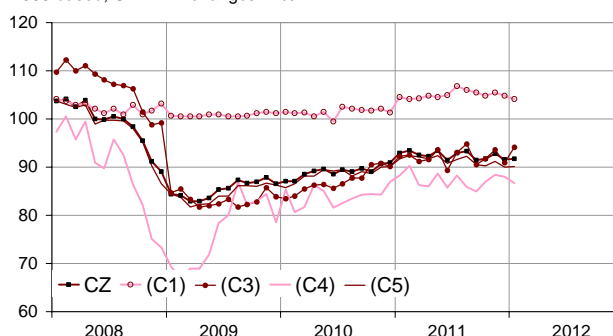
It increased in the *manufacture of electrical and electronic equipment and machine equipment* (+2.0%), in the *manufacture of food products and beverages* (+2.1%), and in the *manufacture of transport equipment* (+1.4%). It was almost stable in the “other manufacturing” (-0.2%).

On the contrary, it strongly decreased in the *manufacture of coke and refined petroleum products* (-6.2%).

Please note: all the series are adjusted for seasonal variations (SA) and the number of working days (WDA).

Monthly industrial Production indexes

2005 based, SA-WDA changes in %



Legend : CZ : Manufacturing - (C1) : Manufacture of food products and beverages - (C3) : Electrical and electronic equipment; machine equipment - (C4) : Manufacture of transport equipment - (C5) : Other manufacturing
Sources : Insee, SSP, SOeS

Variation of the Industrial Production by activity (NA)

2005 based, SA-WDA changes in %

NA : A10, (A17)	Jan. / Dec.	Dec. / Nov.	Quarter on quarter change	Year on year change (1)
BE: INDUSTRY	0,3	-1,3	-0,3	-0,6
CZ: MANUFACTURING	0,2	-1,3	-0,1	0,6
(C1): Manufacture of food products and beverages	-0,6	-0,7	-0,5	2,1
(C2): Manufacture of coke and refined petroleum products	-11,1	0,1	-0,1	-6,2
(C3): Electrical and electronic equipment; machine equipment	3,5	-2,9	0,5	2,0
(C4): Manufacture of transport equipment	-1,5	-0,5	2,1	1,4
(C5): Other manufacturing	0,1	-1,3	-0,6	-0,2
(DE): Mining and quarrying; energy; water supply; waste management	2,4	-1,3	-1,8	-8,2
FZ: Construction	0,6	-0,4	0,8	4,1

(1) Last three months / three same months of previous year
The codes correspond to the level of aggregation A 10 (A 17) of the "NA" aggregate classification based on NAF rev.2.

Sources : INSEE, SSP, SOeS

Variation of the Industrial Production

2005 based, SA-WDA changes in %

NA : A10, (A17), [A38 ou A64]	Jan. 2012	Jan. / Dec.	Dec. / Nov.	Quarter on quarter change
BE: INDUSTRY	92,1	0,3	-1,3	-0,3
CZ: MANUFACTURING	91,8	0,2	-1,3	-0,1
(C1): Man. of food products and beverages	104,2	-0,6	-0,7	-0,5
(C2): Man. of coke and refined petroleum products	69,8	-11,1	0,1	-0,1
(C3): Electrical and electronic equipment; machine equipment	94,1	3,5	-2,9	0,5
[CI] Man. of computer, electronic and optical products	97,5	6,1	-4,2	0,7
[CJ] Man. of electrical equipment	102,4	0,9	-2,1	1,1
[CK] Man. of machinery and equipment n.e.c. (1)	86,8	3,2	-2,2	0,0
(C4): Man. of transport equipment	86,7	-1,5	-0,5	2,1
[CL1] Man. of motor vehicles, trailers and semi-trailers	68,5	-0,6	-1,6	-0,9
[CL2] Man. of other transport equipment	123,8	-2,7	1,0	5,6
(C5): Other manufacturing	90,1	0,1	-1,3	-0,6
[CB] Man. of textiles, wearing apparel, leather and related products	58,3	2,5	-2,6	-1,9
[CC] Man. of wood and paper products; printing and reproduction of recorded media	76,7	-0,4	-0,4	-1,5
[CE] Man. of chemicals and chemical products	113,3	2,9	-0,7	0,2
[CF] Man. of basic pharmaceutical products and pharmaceutical preparations	111,1	-0,3	-0,4	-1,4
[CG] Man. of rubber and plastics products, and other non-metallic mineral products	87,9	-0,3	-0,7	0,5
[CH] Man. of basic metals and fabricated metal products, except machinery and equipment	81,2	0,6	-1,5	-1,4
[CM] Other manufacturing; repair and installation of machinery and equipment	102,1	-2,2	-2,5	0,1
(DE): Mining and quarrying; energy; water supply; waste management	94,8	2,4	-1,3	-1,8
[BZ] Mining and quarrying	91,5	-0,4	0,7	3,7
[DZ] Electricity, gas, steam and air-conditioning supply	93,8	2,5	-1,4	-2,6
[EZ] Water supply; sewerage, waste management and remediation	106,3	3,7	-1,9	1,0
FZ: Construction	97,7	0,6	-0,4	0,8
MIGs (2)				
Capital goods	91,3	0,0	-1,9	0,9
Intermediate goods	87,8	1,3	-1,0	-0,4
Consumer durables	82,1	1,0	-5,1	0,0
Consumer non-durables	101,8	-0,5	-0,7	-0,6

(1) n.e.c. : not elsewhere classifiable

(2) Main industrial groupings : definition in Commission regulation EC of 14 June 2007

Sources : Insee, SSP, SOeS

In January 2012, output rose in the manufacture of electrical and electronic equipment, machine equipment (+3.5%)...

Output soared in the manufacture of computer, electronic and optical products (+6.1%), and in the manufacture of machinery and equipment n.e.c. (+3.2%). It also increased in the manufacture of electrical equipment (+0.9%).

... and was almost stable in the « other manufacturing » (+0.1%)

Output increased in the manufacture of chemicals and chemical products (+2.9%), in the manufacture of basic metals and fabricated metal products (+0.6%) and in the manufacture of textiles, wearing apparel, leather and related products (+2.5%).

Meanwhile, it strongly decreased in the other manufacturing, repair and installation of machinery and equipment (-2.2%). It also decreased in the manufacture of rubber and plastics products (-0.3%), in the manufacture of wood and paper products; printing and reproduction of recorded media (-0.4%) as well as in the manufacture of basic pharmaceutical products and pharmaceutical preparations (-0.3%).

However, it decreased in the manufacture of transport equipment (-1.5%)...

Output decreased in the manufacture of other transport equipment (-2.7%) and in the manufacture of motor vehicles, trailers and semi-trailers (-0.6%).

... and in the manufacture of coke and refined petroleum products (-11.1%).

• Revisions: +0.10 point in December

Measure of variations' revisions

(in point %)

	Dec. / Nov.	Nov. / Oct.	Oct. / Sept.	Q4 2011 / Q3 2011	2011 / 2010
Industry (BE)	0,11	0,00	0,00	-0,07	0,01
raw serie	0,20	-0,31	0,21	0,08	0,04
SA-WDA coefficient	-0,09	0,31	-0,21	-0,15	-0,03
Manufacturing (CZ)	0,10	-0,22	0,00	-0,11	0,03
raw serie	0,30	-0,30	0,30	0,20	0,02
SA-WDA coefficient	-0,20	0,08	-0,30	-0,31	0,01

Note of reading : in the manufacturing, the SA-WDA evolution between November and December is revised by 0.10 point : 0.30 is due to the raw serie's revision and -0.20 to the new calculation of the SA-WDA.

Sources : Insee, SSP, SOeS

Learn more:

- Complementary data (long series) and metadata (methodology, linked internet pages...) are available on the HTML page of this index: <http://www.insee.fr/en/themes/info-rapide.asp?id=10>
- Historical data are available on the BDM: [G950](#), [G951](#), [G952](#), [G953](#), [G963](#).
- Press contact: bureau-de-presse@insee.fr

Next issue: April 10 2012, 8:45 AM