

# Informations *Rapides*



1 avril 2012 - n° 87 **CONJONCTURE**

## ■ Turnover in the wholesale trade and business services - January 2012

### In January 2012, the turnover increased in business support activities and in information and communication

Every index in this issue is in value, seasonally and working-day adjusted.

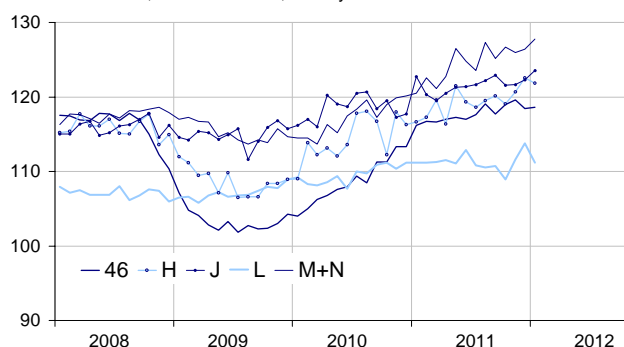
In January 2012, the turnover rose *business support activities* (+1.1 %) and in *information and communication* (+1.0 %). It slightly increased in the *wholesale trade* (+0.2 %). On the contrary, it fall in *real estate activities* (–2.3 %) and in *transportation and storage* (–0.7 %).

Quarter on quarter (q-o-q), the turnover expanded in *real estate activities* (+2.0 %), in *transportation and storage* (+1.8 %), in *business support activities* (+0.3 %), in the *wholesale trade* (+0.2 %) and in *information and communication* (+0.2 %).

Year on year (y-o-y), the turnover rose in *business support activities* (+5.5 %), in the *wholesale trade* (+4.0 %), in *transportation and storage* (+4.0 %), in *information and communication* (+2.7 %) and, to a lesser extent, in *real estate activities* (+1.1 %).

#### Wholesale trade and business service

Turnover indices, value SA-WDA, Base year 2005



Source : INSEE

#### Revisions

The annually update of all the SA-WDA involves higher revisions than usual. The SA-WDA evolution in

December has been revised by +1.1 point in *transportation and storage*. The variation, initially announced at +0.5 %, has been corrected at +1.6 %. In the same period, the SA-WDA evolution has been revised by +0.3 point in *business support activities*, by +0.1 point in the *wholesale trade* and by +0.1 point in *real estate activities*. The turnover's variation has been confirmed in *information and communication*.

#### Monthly turnover indices

SA-WDA value, Base year 2005

Classification NAF rev. 2	Weight	Change in %			
		Jan. /Dec.	Dec./ Nov.	q-o-q (1)	y-o-y (2)
<b>46 Wholesale trade, except of motor vehicles and motorcycles</b>	<b>1000</b>	<b>0.2</b>	<b>–1.0</b>	<b>0.2</b>	<b>4.0</b>
Wholesale on a fee or contract basis	166	–2.8	0.3	1.7	6.8
Wholesale of agricultural raw materials and live animals	62	0.9	–4.0	–0.6	7.2
Wholesale of food, beverages and tobacco	183	1.3	–1.8	–1.2	3.3
Wholesale of household goods	173	–0.3	–0.3	0.1	2.7
Wholesale of professional equipment goods	215	1.6	–0.1	1.5	3.4
Other specialised wholesale	193	0.5	–1.7	–0.5	2.8
<b>H Transportation and storage</b>	<b>1000</b>	<b>–0.7</b>	<b>1.6</b>	<b>1.8</b>	<b>4.0</b>
<b>J Information and communication</b>	<b>1000</b>	<b>1.0</b>	<b>0.5</b>	<b>0.2</b>	<b>2.7</b>
<b>L Real estate activities</b>	<b>1000</b>	<b>–2.3</b>	<b>2.0</b>	<b>2.0</b>	<b>1.1</b>
<b>M+N Business support activities</b>	<b>1000</b>	<b>1.1</b>	<b>0.3</b>	<b>0.3</b>	<b>5.5</b>
M Professional, scientific and technical activities	626	0.4	0.0	0.9	6.3
N Administrative and support service activities	374	2.4	1.0	–0.9	4.0

(1) Quarter-on-quarter: last three months / three previous months.

(2) Year-on-year: last three months / three same months of the previous year.

The codes correspond to different levels of aggregation of the classification NAF rev. 2.

Source : INSEE