

Informations *Rapides*



1 mars 2012 - n° 61 **CONJONCTURE**

■ Turnover in the wholesale trade and business services - December 2011

In December 2011, the turnover rose in real estate activities but fell in the wholesale trade

Every index in this issue is in value, seasonally and working-day adjusted.

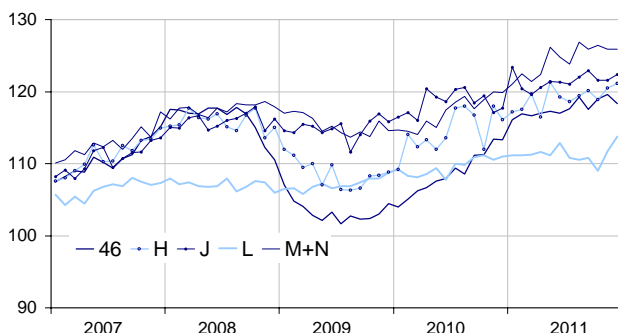
In December 2011, the turnover rose in *real estate activities* (+1.9 %), in *information and communication* (+0.7 %) and in *transportation and storage* (+0.5 %). It declined in the *wholesale trade* (−1.1 %) after an increase in November 2011. It was steady in *business support activities* (0.0 %).

Compared to Q3 2011 (q-o-q), the turnover of Q4 2011 rose in the *wholesale trade* (+0.7 %), in *transportation and storage* (+0.7 %), in *real estate activities* (+0.7 %) and in *business support activities* (+0.4 %). It was broadly stable in *information and communication* (−0.1 %).

Compared to Q4 2010 (y-o-y), the turnover of Q4 2011 grew in the *wholesale trade* (+5.6 %), in *business support activities* (+5.4 %), in *transportation and storage* (+4.2 %), in *information and communication* (+3.2 %) and, to a lesser extent, in *real estate activities* (+0.5 %).

Wholesale trade and business service

Turnover indices, value SA-WDA, Base year 2005



Source : INSEE

Revisions

The SA-WDA evolution in November has been revised by −0.3 point in *information and communication*. The variation, initially announced at +0.3 %, has been

corrected at 0.0 %. In the same period, the SA-WDA evolution has been revised by +0.1 point in the *wholesale trade* and in *real estate activities*. The turnover's variation has been confirmed in *transportation and storage* and in *business support activities*.

Monthly turnover indices

SA-WDA value, Base year 2005

Classification NAF rev. 2	Weight	Change in %			
		Dec./Nov.	Nov./Oct.	q-o-q (1)	y-o-y (2)
46 Wholesale trade, except of motor vehicles and motorcycles	1000	−1.1	0.5	0.7	5.6
Wholesale on a fee or contract basis	166	0.2	2.5	2.5	7.4
Wholesale of agricultural raw materials and live animals	62	−5.1	0.1	0.8	12.5
Wholesale of food, beverages and tobacco	183	−2.1	−2.2	1.1	5.5
Wholesale of household goods	173	−0.2	0.6	0.3	2.7
Wholesale of professional equipment goods	215	0.4	0.8	1.1	4.7
Other specialised wholesale	193	−1.5	1.1	−1.3	5.2
H Transportation and storage	1000	0.5	1.3	0.7	4.2
J Information and communication	1000	0.7	0.0	−0.1	3.2
L Real estate activities	1000	1.9	2.5	0.7	0.5
M+N Business support activities	1000	0.0	−0.4	0.4	5.4
M Professional, scientific and technical activities	626	−0.4	0.3	1.4	6.2
N Administrative and support service activities	374	0.7	−1.7	−1.3	4.1

(1) Quarter-on-quarter: last three months / three previous months.

(2) Year-on-year: last three months / three same months of the previous year.

The codes correspond to different levels of aggregation of the classification NAF rev. 2.

Source: INSEE