

# Informations Rapides

10 avril 2013 - n° 84

Main indicators



## Industrial Production Indices – February 2013

### In February 2013, manufacturing output increased (+0.8%)

In February 2013, **manufacturing output** increased (+0.8%), as well as in **industrial production as a whole** (+0.7%).

#### During the last three months, manufacturing output decreased slightly (-0.3%)...

During the last three months (q-o-q), output decreased slightly in the manufacturing sector (-0.3%), as well as industry as a whole (-0.1%).

Output declined in the *manufacture of electrical and electronic equipment* (-1.3%), in the *manufacture of transport equipment* (-1.3%) and was stable in *other manufacturing* (-0.1%). On the contrary, output increased in the *manufacture of coke and refined petroleum products* (+3.6%).

#### ...but is lower than its last year's level by 3.4%.

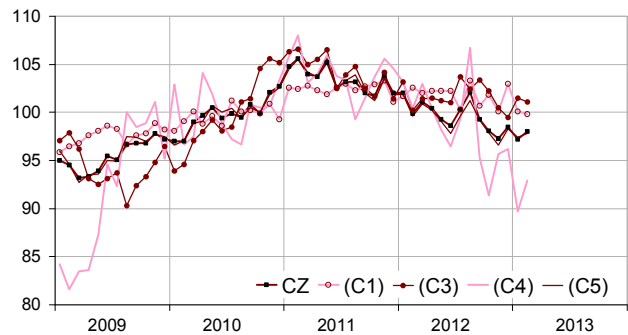
Manufacturing output fell by 3.4% (y-o-y).

Output went down sharply in *other manufacturing* (-3.2%) and even more in the *manufacture of transport equipment* (-9.5%). It decreased to a lesser extent in the *manufacture of electrical and electronic equipment and machine equipment* (-0.9%). Manufacturing output fell in the *manufacture of coke and refined petroleum products* (-6.3%).

Please note: all the series are adjusted for seasonal variations (SA) and the number of working days (WDA).

#### Monthly industrial Production indexes

2010 based, SA-WDA changes in %



Legend : CZ : Manufacturing - (C1) : Manufacture of food products and beverages - (C3) : Electrical and electronic equipment; machine equipment - (C4) : Manufacture of transport equipment - (C5) : Other manufacturing

Sources : Insee, SSP, SOeS

#### Variation of the Industrial Production

2010 based, SA-WDA changes in %

NA : A10, (A17)	Feb. /	Jan. /	Q-o-Q change	Year on year change (1)
	Jan.	Dec.		
<b>BE: INDUSTRY</b>	<b>0,7</b>	<b>-0,8</b>	<b>-0,1</b>	<b>-2,8</b>
<b>CZ: Manufacturing</b>	<b>0,8</b>	<b>-1,3</b>	<b>-0,3</b>	<b>-3,4</b>
(C1): Manufacture of food products and beverages	-0,3	-2,8	0,1	-0,8
(C2): Manufacture of coke and refined petroleum products	17,0	0,5	3,6	-6,3
(C3): Electrical and electronic equipment; machine equipment	-0,4	2,0	-1,3	-0,9
(C4): Manufacture of transport equipment	3,6	-6,8	-1,3	-9,5
(C5): Other manufacturing	0,4	-0,9	-0,1	-3,2
(DE): Mining and quarrying; energy; water supply; waste management	0,5	1,1	0,9	-0,2
<b>FZ: CONSTRUCTION</b>	<b>1,0</b>	<b>-4,0</b>	<b>-1,9</b>	<b>-1,4</b>

(1) Last three months / three previous months

(2) Last three months / three same months of previous year

The codes correspond to the level of aggregation A 10 (A 17) of the "NA" aggregate classification based on NAF rev.2.

Sources : INSEE, SSP, SOeS

## Variation of the Industrial Production

2010 based, SA-WDA changes in %

	Feb. 2013	Feb. / Jan.	Jan. / Dec.	Quar- ter on quar- ter chang e
<b>NA : A10, (A17), [A38 ou A64]</b>				
<b>BE: INDUSTRY</b>	<b>98,0</b>	<b>0,7</b>	<b>-0,8</b>	<b>-0,1</b>
<b>CZ: Manufacturing</b>	<b>98,0</b>	<b>0,8</b>	<b>-1,3</b>	<b>-0,3</b>
(C1): Man. of food products and beverages	99,8	-0,3	-2,8	0,1
(C2): Man. of coke and refined petroleum products	96,3	17,0	0,5	3,6
(C3): Electrical and electronic equipment; machine equipment	101,1	-0,4	2,0	-1,3
[CI] Man. of computer, electronic and optical products	99,9	-3,9	7,5	1,8
[CJ] Man. of electrical equipment	97,0	1,9	0,5	-2,7
[CK] Man. of machinery and equipment n.e.c. (1)	104,4	0,4	-0,1	-2,2
(C4): Man. of transport equipment	92,9	3,6	-6,8	-1,3
[CL1] Man. of motor vehicles, trailers and semi-trailers	79,7	2,0	-13,0	-2,0
[CL2] Man. of other transport equipment	107,7	4,7	-0,5	-0,5
(C5): Other manufacturing	97,8	0,4	-0,9	-0,1
[CB] Man. of textiles, wearing apparel, leather and related products	94,2	-3,2	-2,3	-4,0
[CC] Man. of wood and paper products; printing and reproduction of recorded media	91,0	0,3	-1,8	2,0
[CE] Man. of chemicals and chemical products	107,3	-0,5	0,3	1,2
[CF] Man. of basic pharmaceutical products and pharmaceutical preparations	99,9	0,0	0,1	-0,1
[CG] Man. of rubber and plastics products, and other non-metallic mineral products	93,8	0,9	-2,0	-0,2
[CH] Man. of basic metals and fabricated metal products, except machinery and equipment	97,0	1,9	-2,0	-0,7
[CM] Other manufacturing; repair and installation of machinery and equipment	100,1	-0,6	0,8	-0,1
(DE): Mining and quarrying; energy; water supply; waste management	98,0	0,5	1,1	0,9
[BZ] Mining and quarrying	94,5	0,6	-3,3	-1,9
[DZ] Electricity, gas, steam and air-conditioning supply	98,2	1,0	1,6	1,7
[EZ] Water supply; sewerage, waste management and remediation	98,5	-2,9	0,5	-3,7
<b>FZ: CONSTRUCTION</b>	<b>95,6</b>	<b>1,0</b>	<b>-4,0</b>	<b>-1,9</b>
<b>MIGs (2)</b>				
Capital goods	98,0	0,3	-1,4	-0,9
Intermediate goods	96,4	1,2	-1,2	-0,2
Consumer durables	103,7	1,6	-0,8	0,5
Consumer non-durables	100,1	-0,5	-1,5	0,0

(1) n.e.c. : not elsewhere classifiable

(2) Main industrial groupings : definition in Commission regulation EC of 14 June 2007

Sources : Insee, SSP, SOeS

### Output increased in the manufacture of transport equipment (+3.6%)...

Output increased in the *manufacture of other transport equipment* (+4.7%) and more slightly in the *manufacture of motor vehicles, trailers and semi-trailers* (+2.0%).

### ... in the manufacture of coke and refined petroleum products (+17.0%)...

Output soared in the *manufacture of coke and refined petroleum products* (+17.0%) because of the starting up again of a refinery.

### ...and in "other manufacturing" (+0.4%).

Output went up in the *manufacture of basic metals and fabricated metal products, except machinery and equipment* (+1.9%), in the *manufacture of rubber and plastics products and other non-metallic mineral products* (+0.9%), and in the *manufacture of wood and paper products; printing and reproduction of recorded media* (+0.3%). Output was stable in the *manufacture of basic pharmaceutical products and pharmaceutical preparations*. On the other hand, output went down in the *manufacture of textiles, wearing apparel, leather and related products* (-3.2%), in *other manufacturing, repair and installation of machinery and equipment* (-0.6%), and in the *manufacture of chemicals and chemical products* (-0.5%).

### Output decreased in the manufacture of electrical and electronic equipment, machine equipment (-0.4%).

Output decreased by 3.9% in the *manufacture of computer, electronic and optical product*. On the contrary, output improved in the *manufacture of electrical equipment* (+1.9%) and in the *manufacture of machinery and equipment n.e.c.* (+0.4%).

#### • Revisions in January

##### Measure of variations' revisions

(in point %)

	Jan. / Dec.	Dec. / Nov.	Nov. / Oct.	Q4 2012 / Q3 2012	2012 / 2011
<b>Industry (BE)</b>	<b>0,41</b>	<b>-0,10</b>	<b>-0,10</b>	<b>0,00</b>	<b>-0,07</b>
raw serie	0,12	-0,10	0,00	-0,07	-0,07
SA-WDA coefficient	0,29	0,00	-0,10	0,07	0,00
<b>Manufacturing (CZ)</b>	<b>0,10</b>	<b>-0,10</b>	<b>0,00</b>	<b>-0,04</b>	<b>-0,09</b>
raw serie	0,01	-0,20	0,00	0,04	-0,09
SA-WDA coefficient	0,09	0,10	0,00	-0,08	0,00

Note of reading : in the manufacturing, the SA-WDA evolution between December 2012 and January 2013 is revised by 0.10 point : 0.01 point is due to the raw serie's revision and 0.09 to the new calculation of the SA-WDA..

Sources : Insee, SSP, SOeS

#### Learn more:

- Complementary data (long series) and metadata (methodology, linked internet pages...) are available on the HTML page of this index: <http://www.insee.fr/en/themes/info-rapide.asp?id=10>
- Historical data are available on the BDM: [G950](#), [G951](#), [G952](#), [G953](#), [G963](#).
- Press contact: [bureau-de-presse@insee.fr](mailto:bureau-de-presse@insee.fr)

Next issue: May 7 2013, 8:45 AM