

Informations Rapides

3 novembre 2011 - n° 270



CONJONCTURE

■ Turnover in the retail trade and personal services - August 2011

In August 2011, the turnover rose in the trade and repair of motor vehicles and motorcycles and in the retail trade

Every index in this issue is in volume, seasonally and working-day adjusted.

In August 2011, the turnover sharply increased in the *trade and repair of motor vehicles and motorcycles* (+1.9 %). In the same period, it also rose in the *retail trade, except of motor vehicles and motorcycles* (+1.2 %) and in *accommodation and food services activities* (+0.7 %). It was unchanged in *household services* (0.0 %).

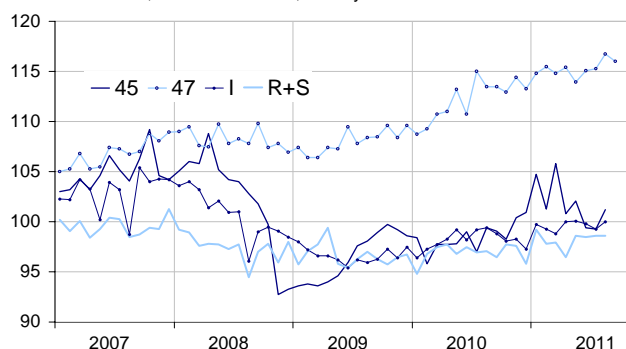
Quarter on quarter (q-o-q), the turnover grew in *household services* (+0.9 %) and in the *retail trade* (+0.9 %). It was broadly stable in *accommodation and food service activities* (+0.1 %) whereas it fell in the *trade and repair of motor vehicles and motorcycles* (-2.9 %).

Year on year (y-o-y), the turnover expanded in the *retail trade* (+2.3 %), in the *trade and repair of motor vehicles and motorcycles* (+1.5 %), in *households services* (+1.4 %) and in *accommodation and food services activities* (+0.8 %).

According to our estimate, the turnover in the *retail trade* is expected to decline in September 2011 (-0.7 %).

Retail trade and personal services

Turnover indices, volume SA-WDA, Base year 2005



Source : INSEE

Please note that the « retail trade... » chart (47) includes the early estimate for September 2011.

Revisions

The SA-WDA evolution in July has been revised by +0.2 point in *household services*. The variation, initially announced at -0.1 %, has been corrected at +0.1 %, in particular due to the raw series' revision in the sector *arts, entertainment and recreation*. In the same period, the SA-WDA evolution has been revised by +0.1 point in the *retail trade*, by +0.1 point in *accommodation and food service activities* and by -0.1 point in the *trade and repair of motor vehicles and motorcycles*.

Monthly turnover indices

SA-WDA volume, Base year 2005

Classification NAF rev. 2	Weight	Change in %			
		Aug./ July	July/ June	q-o-q (1)	y-o-y (2)
45 Trade and repair of motor vehicles and motorcycles	1000	1.9	-0.1	-2.9	1.5
47 Retail trade, except of motor vehicles and motorcycles	1000	1.2	0.2	0.9	2.3
471 Retail sale in non-specialised stores	415	0.9	-1.5	-1.0	0.0
472 to 477 Retail sale in specialised stores	545	1.4	1.1	2.1	3.9
478 and 479 Retail trade not in stores	40	2.2	0.7	0.4	0.8
I Accommodation and food service activities	1000	0.7	-0.5	0.1	0.8
R+S Households services	1000	0.0	0.1	0.9	1.4
R Arts, entertainment and recreation	472	-1.4	0.4	1.9	3.5
S Other service activities	528	1.4	-0.3	0.0	-0.4

(1) Quarter-on-quarter: last three months / three previous months.

(2) Year-on-year: last three months / three same months of the previous year.

The codes correspond to different levels of aggregation of the classification NAF rev.2.

Source : INSEE

Turnover indices: early estimate*

SA-WDA volume, Base year 2005

	Change in %	
	Sept. 2011/ Aug. 2011	Sept. 2011/ Sept. 2010
47 Retail trade...	-0.7	2.1

* Econometric estimate from a set of sources available within 30 days after the end of the reference month

Source : INSEE