

Informations Rapides

10 novembre 2011 - n° 274 **CONJONCTURE**



Main indicators

Industrial Production Indices – September 2011

In September 2011, manufacturing output sharply decreased (-1.6%)

In September 2011, **manufacturing output** sharply decreased in volume (-1.6%). It had increased in August 2011 (+0.6%).

In **overall industrial production**, output decreased as well (-1.7%), as well as in the construction (-5.8%).

However, in the last three months, manufacturing output increased (+0.5%)...

In the last three months (quarter-on-quarter change), output increased in the manufacturing sector (+0.5%, q-o-q) and in the industry as a whole (+0.8%).

Output increased in the *electrical, electronic equipment and machine equipment* (+2.2%) and was relatively steady in the "other manufacturing" (+0.3%). On the opposite, it decreased in the *manufacture of transport equipment* (-0.7%).

...and exceeded its last year's level by 4.2%

Manufacturing output rose by 4.2% (y-o-y).

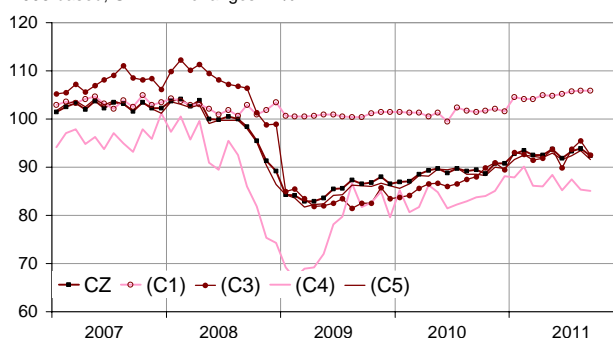
It strongly increased in the "other manufacturing" (+3.9%), in the *electrical and electronic equipment and machine equipment* (+7.5%), in the *manufacture of food products and beverages* (+3.9%) and in the *manufacture of transport equipment* (+3.6%).

On the other hand, output strongly decreased in the *manufacture of coke and refined petroleum products* (-8.6%).

Please note: all the series are adjusted for seasonal variations (SA) and the number of working days (WDA).

Monthly industrial Production indexes

2005 based, SA-WDA changes in %



Legend : CZ : Manufacturing - (C1) : Manufacture of food products and beverages - (C3) : Electrical and electronic equipment; machine equipment - (C4) : Manufacture of transport equipment - (C5) : Other manufacturing

Sources : Insee, SSP, SOeS

Variation of the Industrial Production by activity (NA)

2005 based, SA-WDA changes in %

NA : A10, (A17)	Sept. / Aug.	Aug. / July	Quarter on quarter change	Year on year change (1)
BE: INDUSTRY	-1,7	0,5	0,8	3,4
CZ: MANUFACTURING	-1,6	0,6	0,5	4,2
(C1): Manufacture of food products and beverages	0,0	0,2	0,8	3,9
(C2): Manufacture of coke and refined petroleum products	-1,3	2,0	-0,9	-8,6
(C3): Electrical and electronic equipment; machine equipment	-3,1	1,9	2,2	7,5
(C4): Manufacture of transport equipment	-0,2	-2,5	-0,7	3,6
(C5): Other manufacturing	-1,9	1,1	0,3	3,9
(DE): Mining and quarrying; energy; water supply; waste management	-2,4	-0,2	2,8	-1,6
FZ: Construction	-5,8	2,1	-0,4	0,1

(1) Last three months / three same months of previous year
The codes correspond to the level of aggregation A 10 (A 17) of the "NA" aggregate classification based on NAF rev.2.

Sources : INSEE, SSP, SOeS

In September 2011, output decreased in the « other manufacturing » (-1.9%) ...

Output decreased in the *manufacture of rubber and plastics products* (-3.8%), in the *“other manufacturing, repair and installation of machinery and equipment”* (-2.9%), in the *manufacture of basic metals and fabricated metal products* (-1.5%), in the *manufacture of chemicals and chemical products* (-2.6%) as well as in the *manufacture of wood and paper products; printing and reproduction of recorded media* (-3.1%).

On the opposite, output increased in the *manufacture of textiles, wearing apparel, leather and related products* (+3.7%) and in the *manufacture of basic pharmaceutical products and pharmaceutical preparations* (+0.6%).

Variation of the Industrial Production

2005 based, SA-WDA changes in %

NA : A10, (A17), [A38 ou A64]	Sept. 2011	Sept. / Aug.	Aug. / July	Quarter on quarter change
BE: INDUSTRY	92,8	-1,7	0,5	0,8
CZ: MANUFACTURING	92,4	-1,6	0,6	0,5
(C1): Man. of food products and beverages	105,9	0,0	0,2	0,8
(C2): Man. of coke and refined petroleum products	74,6	-1,3	2,0	-0,9
(C3): Electrical and electronic equipment; machine equipment	92,5	-3,1	1,9	2,2
[CI] Man. of computer, electronic and optical products	93,5	-2,7	-2,4	1,8
[CJ] Man. of electrical equipment	101,5	-1,9	1,8	0,1
[CK] Man. of machinery and equipment n.e.c. (1)	86,5	-4,3	5,9	4,0
(C4): Man. of transport equipment	85,1	-0,2	-2,5	-0,7
[CL1] Man. of motor vehicles, trailers and semi-trailers	68,0	-7,2	-0,3	-0,9
[CL2] Man. of other transport equipment	119,9	9,1	-5,3	-0,3
(C5): Other manufacturing	91,6	-1,9	1,1	0,3
[CB] Man. of textiles, wearing apparel, leather and related products	59,6	3,7	-6,8	-4,8
[CC] Man. of wood and paper products; printing and reproduction of recorded media	79,1	-3,1	2,0	-0,4
[CE] Man. of chemicals and chemical products	109,7	-2,6	0,2	-2,6
[CF] Man. of basic pharmaceutical products and pharmaceutical preparations	119,9	0,6	0,6	2,0
[CG] Man. of rubber and plastics products, and other non-metallic mineral products	86,7	-3,8	0,9	-1,7
[CH] Man. of basic metals and fabricated metal products, except machinery and equipment	83,2	-1,5	1,7	1,4
[CM] Other manufacturing; repair and installation of machinery and equipment	103,5	-2,9	2,6	3,4
(DE): Mining and quarrying; energy; water supply; waste management	95,5	-2,4	-0,2	2,8
[BZ] Mining and quarrying	86,7	-2,9	2,4	0,9
[DZ] Electricity, gas, steam and air-conditioning supply	95,5	-2,9	-0,6	3,6
[EZ] Water supply; sewerage, waste management and remediation	101,7	2,1	1,7	-2,8
FZ: Construction	88,9	-5,8	2,1	-0,4
MIGs (2)				
Capital goods	86,4	-2,8	1,0	1,8
Intermediate goods	84,9	-2,2	0,9	-0,3
Consumer durables	78,4	-3,8	1,7	3,0
Consumer non-durables	105,4	0,6	-0,4	0,3

(1) n.e.c. : not elsewhere classifiable

(2) Main industrial groupings : definition in Commission regulation EC of 14 June 2007

Sources : Insee, SSP, SOeS

... in the manufacture of electrical and electronic equipment, machine equipment (-3.1%) ...

Output strongly decreased in the *manufacture of machinery and equipment n.e.c.* (-4.3%). It also decreased in the *manufacture of computer, electronic and optical products* (-2.7%) and in the *manufacture of electrical equipment* (-1.9%).

... as well as in the manufacture of transport equipment (-0.2%)

Output strongly decreased in the *manufacture of motor vehicles, trailers and semi-trailers* (-7.2%). On the other hand, it soared in the *manufacture of other transport equipment* (+9.1%).

• Revisions : -0.10 point in August

Measure of variations' revisions

(in point %)

	Aug. / July	July / June	June / May	Q2 2011 / Q1 2011	2010 / 2009
Industry (BE)	0,01	-0,30	-0,12	-0,15	-0,48
raw series	0,24	0,06	-0,43	0,04	-0,48
SA-WDA coefficient	-0,23	-0,36	0,31	-0,19	0,00
Manufacturing (CZ)	-0,10	-0,30	-0,02	-0,25	-0,56
raw series	0,30	0,05	-0,31	0,06	-0,57
SA-WDA coefficient	-0,40	-0,35	0,29	-0,31	0,01

Note of reading : in the manufacturing, the SA-WDA evolution between July and August is revised by -0.10 point : 0.30 is due to the raw series' revision and -0.40 to the new calculation of the SA-WDA.

Sources : Insee, SSP, SOeS

In 2010, the revision of the industrial production is mainly due to the new results given by the 2010 Annual Production Survey.