

Informations Rapides



10 août 2012 - n° 199 CONJONCTURE

Main indicators

Industrial Production Indices – June 2012

In June 2012, manufacturing output was almost stable (+0.1%)

In June 2012, **manufacturing output** was almost stable in volume (+0.1%). It had decreased in May (-1.1%).

Output was stable in **total industry**.

During the last quarter, manufacturing output decreased (-1.2%)...

During the last quarter (quarter-on-quarter change), output decreased in the manufacturing sector (-1.2%) as well as in the industry as a whole (-0.6%).

Output decreased in the *manufacture of transport equipment* (-3.7%), in the *“other manufacturing”* (-0.6%) and in the *manufacture of electrical and electronic equipment* (-1.9%).

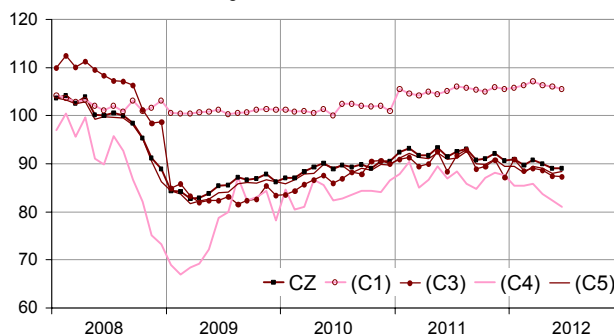
...and was lower than its last year's level by 3.1%

Manufacturing output decreased by 3.1% (y-o-y). It decreased in the *“other manufacturing”* (-3.2%), in the *manufacture of transport equipment* (-6.0%) and in the *manufacture of electrical and electronic equipment and machine equipment* (-2.8%). The *manufacture of coke and refined petroleum products* decreased strongly (-13.1%).

Please note: all the series are adjusted for seasonal variations (SA) and the number of working days (WDA).

Monthly industrial Production indexes

2005 based, SA-WDA changes in %



Legend : CZ : Manufacturing - (C1) : Manufacture of food products and beverages - (C3) : Electrical and electronic equipment; machine equipment - (C4) : Manufacture of transport equipment - (C5) : Other manufacturing
Sources : Insee, SSP, SOeS

Variation of the Industrial Production by activity (NA)

2005 based, SA-WDA changes in %

NA : A10, (A17)	June / May	May / April	Quarter on quarter change	Year on year change (1)
BE: INDUSTRY	0.0	-2.1	-0.6	-1.9
CZ: MANUFACTURING	0.1	-1.1	-1.2	-3.1
(C1): Manufacture of food products and beverages	-0.5	-0.2	-0.4	1.0
(C2): Manufacture of coke and refined petroleum products	13.6	-5.9	0.7	-13.1
(C3): Electrical and electronic equipment; machine equipment	-0.2	-1.4	-1.9	-2.8
(C4): Manufacture of transport equipment	-1.7	-1.6	-3.7	-6.0
(C5): Other manufacturing	0.5	-1.1	-0.6	-3.2
(DE): Mining and quarrying; energy; water supply; waste management	-0.8	-7.7	3.2	6.0
FZ: Construction	0.7	-1.2	2.9	-1.5

(1) Last three months / three same months of previous year
The codes correspond to the level of aggregation A 10 (A 17) of the "NA" aggregate classification based on NAF rev.2.

Sources : INSEE, SSP, SOeS

Variation of the Industrial Production

2005 based, SA-WDA changes in %

	June 2012	June / May	May / April	Quarter on quarter change
NA : A10, (A17), [A38 ou A64]				
BE: INDUSTRY	90.1	0.0	-2.1	-0.6
CZ: MANUFACTURING	89.1	0.1	-1.1	-1.2
(C1): Man. of food products and beverages	105.6	-0.5	-0.2	-0.4
(C2): Man. of coke and refined petroleum products	70.9	13.6	-5.9	0.7
(C3): Electrical and electronic equipment; machine equipment	87.3	-0.2	-1.4	-1.9
[CI] Man. of computer, electronic and optical products	86.6	-4.0	-2.6	-4.3
[CJ] Man. of electrical equipment	100.0	3.3	-0.3	1.3
[CK] Man. of machinery and equipment n.e.c. (1)	80.6	0.6	-1.0	-2.0
(C4): Man. of transport equipment	81.0	-1.7	-1.6	-3.7
[CL1] Man. of motor vehicles, trailers and semi-trailers	61.2	-3.0	-0.9	-4.1
[CL2] Man. of other transport equipment	121.5	-0.1	-2.2	-3.4
(C5): Other manufacturing	88.4	0.5	-1.1	-0.6
[CB] Man. of textiles, wearing apparel, leather and related products	59.9	2.7	-0.3	1.5
[CC] Man. of wood and paper products; printing and reproduction of recorded media	77.0	2.5	-0.8	0.2
[CE] Man. of chemicals and chemical products	112.4	-1.1	-0.4	0.3
[CF] Man. of basic pharmaceutical products and pharmaceutical preparations	112.4	-0.3	-0.4	-1.2
[CG] Man. of rubber and plastics products, and other non-metallic mineral products	81.8	-1.3	-1.1	-1.6
[CH] Man. of basic metals and fabricated metal products, except machinery and equipment	78.7	0.4	-1.1	-1.5
[CM] Other manufacturing; repair and installation of machinery and equipment	102.0	2.3	-2.7	0.5
(DE): Mining and quarrying; energy; water supply; waste management	96.7	-0.8	-7.7	3.2
[BZ] Mining and quarrying	84.3	-2.7	-0.9	4.0
[DZ] Electricity, gas, steam and air-conditioning supply	96.3	-1.0	-9.2	3.5
[EZ] Water supply; sewerage, waste management and remediation	109.3	1.8	0.8	-0.6
FZ: Construction	94.5	0.7	-1.2	2.9
MIGs (2)				
Capital goods	86.0	-0.6	-2.1	-2.4
Intermediate goods	84.4	0.0	-0.6	-0.7
Consumer durables	83.7	1.5	-0.1	0.6
Consumer non-durables	103.1	0.2	-0.5	-0.5

(1) n.e.c. : not elsewhere classifiable

(2) Main industrial groupings : definition in Commission regulation EC of 14 June 2007

Sources : Insee, SSP, SOeS

Output increased in the « other manufacturing » (+0.5%)...

Output increased in the *other manufacturing, repair and installation of machinery and equipment* (+2.3%), in the *manufacture of wood and paper products; printing and reproduction of record media* (+2.5%), in the *manufacture of textiles, wearing apparel, leather and related products* (+2.7%). On the opposite, it decreased in the *manufacture of rubber and plastics products* (-1.3%), in the *manufacture of chemicals and chemical products* (-1.1%).

... but decreased in the manufacture of transport equipment (-1.7%)...

Output decreased in the *manufacture of motor vehicles, trailers and semi-trailers* (-3.0%) and was almost stable in the *manufacture of other transport equipment* (-0.1%).

It was almost stable in the manufacture of electrical and electronic equipment, machine equipment (-0.2%)

Output decreased in the *manufacture of computer, electronic and optical products* (-4.0%), but it increased in the *manufacture of electrical equipment* (+3.3%) and in the *manufacture of machinery and equipment n.e.c.* (+0.6%).

Output soared in the manufacture of coke and refined petroleum products (+13.6%)

Output soared by 13.6% in the *manufacture of coke and refined petroleum products*, due to a recovery of activity in a refinery since mid June.

• Revisions: -0.12 in May

Measure of variations' revisions

(in point %)

	May / April	April / March	March / Feb.	Q1 2012 / Q4 2011	2011 / 2010
Industry (BE)	-0.12	0.01	-0.11	-0.04	-0.39
raw serie	-0.05	-0.36	-0.30	-0.03	-0.38
SA-WDA coefficient	-0.07	0.37	0.19	-0.01	-0.01
Manufacturing (CZ)	-0.12	-0.01	-0.21	-0.04	-0.46
raw serie	-0.26	-0.27	-0.29	-0.12	-0.43
SA-WDA coefficient	0.14	0.26	0.08	0.08	-0.03

Note of reading : in the manufacturing, the SA-WDA evolution between April and May is revised by -0.12 point : -0.26 is due to the raw serie's revision and 0.14 to the new calculation of the SA-WDA.

Sources : Insee, SSP, SOeS

Learn more:

- Complementary data (long series) and metadata (methodology, linked internet pages...) are available on the HTML page of this index: <http://www.insee.fr/en/themes/info-rapide.asp?id=10>
- Historical data are available on the BDM: [G950](#), [G951](#), [G952](#), [G953](#), [G963](#).
- Press contact: bureau-de-presse@insee.fr

Next issue: September 10 2012, 8:45 AM