

Informations Rapides



1 février 2013 - n° 31 CONJONCTURE

■ Turnover in the retail trade and personal services - November 2012

In November 2012, the volume of sales declined in the trade and repair of motor vehicles and motorcycles and in household services

Every index in this issue is in volume, seasonally and working-day adjusted (SA-WDA).

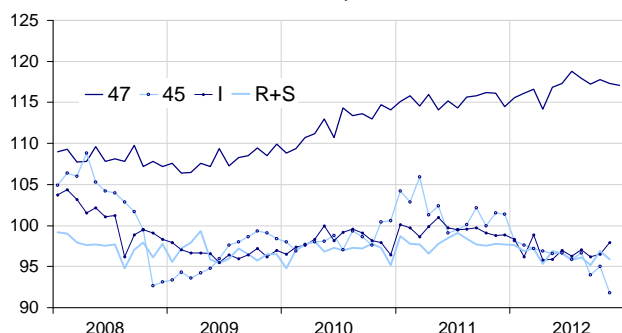
In November 2012, the volume of sales dropped compared to October in the *trade and repair of motor vehicles and motorcycles* (-3.4%). It also fell in *household services* (-1.0%) and in the *retail trade, except for motor vehicles and motorcycles* (-0.4%). Conversely, it went up in *accommodation and food service activities* (+1.5%).

Over the quarter (q-o-q), the volume of sales declined in the *trade and repair of motor vehicles and motorcycles* (-2.9%) and, to a lesser extent, in the *retail trade, except for motor vehicles and motorcycles* (-0.5%) and in *household services* (-0.2%). It was broadly stable in *accommodation and food service activities* (+0.1%).

Year-on-year, the volume of sales went down considerably in the *trade and repair of motor vehicles and motorcycles* (-7.5%). It also decreased in *accommodation and food services activities* (-2.4%) and in *household services* (-1.7%). On the contrary, it increased in the *retail trade, except for motor vehicles and motorcycles* (+1.2%).

Turnover in the retail trade and personal services

Turnover indexes, SA-WDA volume, Base year 2005



Please note that the «retail trade, except for motor vehicles and motorcycles» chart (47) includes the early estimate for December 2012.

Source : INSEE

In December 2012, the volume of sales in the retail trade is expected to come down slightly (-0.3%).

Revisions

The evolution in October has been revised by +0.3 point in *accommodation and food service activities* and -0.1 point in the *trade and repair of motor vehicles and motorcycles*. These variations, announced at 0.0% and +1.2% last month, have been corrected at +0.3% and +1.1%.

Variation of the turnover in the retail trade and personal services

SA-WDA volume, Base year 2005

NACE classification	Weight	Change in %			
		Nov./ Oct.	Oct./ Sept.	q-o-q (1)	y-o-y (2)
47 Retail trade, except for motor vehicles and motorcycles	1000	-0.4	0.5	-0.5	1.2
471 Retail sale in non-specialized stores	415	-1.3	1.3	0.0	0.2
472 to 477 Retail sale in specialized stores	545	0.2	-0.1	-0.8	2.0
478 and 479 Retail trade not in stores	40	-2.2	3.2	0.5	0.0
45 Trade and repair of motor vehicles and motorcycles	1000	-3.4	1.1	-2.9	-7.5
I Accommodation and food service activities	1000	1.5	0.3	0.1	-2.4
R+S Household services	1000	-1.0	1.8	-0.2	-1.7
R Arts, entertainment and recreation	472	-0.9	1.9	0.5	-0.8
S Other service activities	528	-1.2	1.6	-0.8	-2.6

(1) Quarter-on-quarter: last three months / three previous months.

(2) Year-on-year: last three months / same three months of the previous year.

Source: INSEE