

Informations Rapides



3 septembre 2012 - n° 217 **CONJONCTURE**

■ Turnover in the wholesale trade and business services - June 2012

In June 2012, the turnover slightly decreased in the wholesale trade and business services

Every index in this issue is in value, seasonally and working-day adjusted.

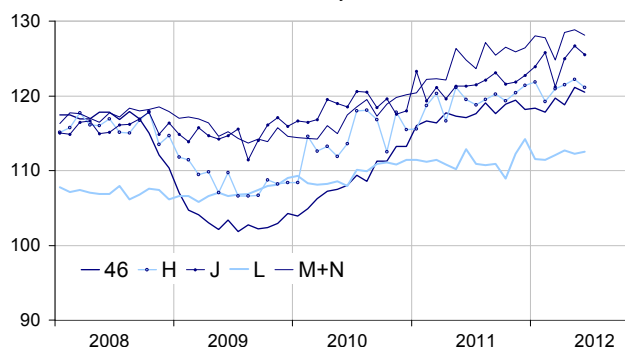
In June 2012, the turnover went down compared to May in *transportation and storage* (−0.9 %), in *information and communication* (−0.9 %), in the *wholesale trade* (−0.5 %) and in *business support activities* (−0.5 %). Conversely, it slightly rose in *real estate activities* (+0.3 %).

Compared to Q1 2012 (q-o-q), the turnover of Q2 2012 grew : +1.7 % in *information and communication*, +1.3 % in the *wholesale trade*, +1.3 % in *business support activities*, +0.8 % in *transportation and storage* and +0.7 % in *real estate activities*.

Compared to Q2 2011 (y-o-y), the turnover of Q2 2012 rose : +4.1 % in *information and communication*, +3.3 % in *business support activities*, +2.4 % in the *wholesale trade*, +2.1 % in *transportation and storage* and +1.0 % in *real estate activities*.

Wholesale trade and business service

Turnover indices, value SA-WDA, Base year 2005



Source : INSEE

Revisions

The SA-WDA evolution in May has been revised by −0.7 point in *transportation and storage*. The variation,

initially announced at +1.3 %, has been corrected at +0.6 %. The correction is due to the coefficients SA-WDA's updating. In the same period, the SA-WDA evolution has been revised by +0.3 point in *business support activities*, by +0.2 point in *information and communication* and by −0.2 point in *real estate activities*.

Monthly turnover indices

SA-WDA value, Base year 2005

Classification NAF rev. 2	Weight	Change in %			
		June/ May	May/ April	q-o-q (1)	y-o-y (2)
46 Wholesale trade, except of motor vehicles and motorcycles	1000	−0.5	1.9	1.3	2.4
Wholesale on a fee or contract basis	166	−2.2	3.6	3.0	7.0
Wholesale of agricultural raw materials and live animals	62	−6.0	7.9	0.7	−1.4
Wholesale of food, beverages and tobacco	183	−0.9	1.1	1.7	3.4
Wholesale of household goods	173	0.9	−0.2	0.6	0.7
Wholesale of professional equipment goods	215	3.0	1.1	0.8	2.7
Other specialised wholesale	193	−0.8	1.6	0.7	0.2
H Transportation and storage	1000	−0.9	0.6	0.8	2.1
J Information and communication	1000	−0.9	1.4	1.7	4.1
L Real estate activities	1000	0.3	−0.4	0.7	1.0
M+N Business support activities	1000	−0.5	0.2	1.3	3.3
M Professional, scientific and technical activities	626	−0.4	0.8	1.4	3.6
N Administrative and support service activities	374	−0.8	−0.9	0.9	2.5

(1) Quarter-on-quarter: last three months / three previous months.

(2) Year-on-year: last three months / three same months of the previous year.

The codes correspond to different levels of aggregation of the classification NAF rev. 2.

Source : INSEE