

# Informations *Rapides*



1 février 2012 - n° 37 **CONJONCTURE**

## ■ Turnover in the retail trade and personal services - November 2011

### In November 2011, the turnover rose in the trade and repair of motor vehicles and motorcycles and in accommodation and food service activities

Every index in this issue is in volume, seasonally and working-day adjusted.

In November 2011, the turnover increased in the *trade and repair of motor vehicles and motorcycles* (+0.9 %) and in *accommodation and food service activities* (+0.7 %). It slightly declined in the *retail trade, except of motor vehicles and motorcycles* (−0.3 %) whereas it was steady in *household services* (0.0 %).

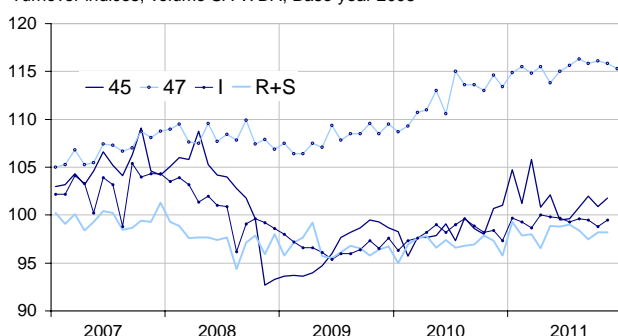
Quarter on quarter (q-o-q), the turnover grew in the *trade and repair of motor vehicles and motorcycles* (+1.6 %) and, to a lesser extent, in the *retail trade* (+0.3 %). It declined in *household services* (−0.8 %) and in *accommodation and food service activities* (−0.3 %).

Year on year (y-o-y), the turnover grew in the *trade and repair of motor vehicles and motorcycles* (+2.5 %), in the *retail trade* (+1.9 %), in *accommodation and food services activities* (+0.8 %) and in *households services* (+0.6 %).

According to our estimate, the turnover in the *retail trade* is expected to decrease in December 2011 (−0.4 %).

#### Retail trade and personal services

Turnover indices, volume SA-WDA, Base year 2005



Source : INSEE

Please note that the « retail trade... » chart (47) includes the early estimate for December 2011.

#### Revisions

The SA-WDA evolution in October has been revised by −0.4 point in the *trade and repair of motor vehicles and motorcycles*. This correction is due to the coefficients SA-WDA's updating in the sector of *sale of motor vehicles*. The variation, initially announced at −0.7 %, has been corrected at −1.1 %. In the same period, the SA-WDA evolution has been revised by −0.3 point in *accommodation and food service activities* and by −0.1 point in the *retail trade*. The turnover's variation has been confirmed in *household services*.

#### Monthly turnover indices

SA-WDA volume, Base year 2005

Classification NAF rev. 2	Weight	Change in %			
		Nov./ Oct.	Oct./ Sept.	q-o-q (1)	y-o-y (2)
<b>45 Trade and repair of motor vehicles and motorcycles</b>	<b>1000</b>	<b>0.9</b>	<b>−1.1</b>	<b>1.6</b>	<b>2.5</b>
<b>47 Retail trade, except of motor vehicles and motorcycles</b>	<b>1000</b>	<b>−0.3</b>	<b>0.3</b>	<b>0.3</b>	<b>1.9</b>
471 Retail sale in non-specialized stores	415	−0.5	0.0	0.6	0.4
472 to 477 Retail sale in specialized stores	545	−0.2	0.5	0.1	2.9
478 and 479 Retail trade not in stores	40	0.8	−1.2	1.2	2.2
<b>I Accommodation and food service activities</b>	<b>1000</b>	<b>0.7</b>	<b>−0.7</b>	<b>−0.3</b>	<b>0.8</b>
<b>R+S Households services</b>	<b>1000</b>	<b>0.0</b>	<b>0.7</b>	<b>−0.8</b>	<b>0.6</b>
R Arts, entertainment and recreation	472	−0.7	1.6	−1.5	2.0
S Other service activities	528	0.7	−0.2	−0.2	−0.7

(1) Quarter-on-quarter: last three months / three previous months.

(2) Year-on-year: last three months / three same months of the previous year.

The codes correspond to different levels of aggregation of the classification NAF rev.2.

Source: INSEE

#### Turnover indices: early estimate\*

SA-WDA volume, Base year 2005

	Change in %	
	Dec. 2011/ Nov. 2011	Dec. 2011/ Dec. 2010
<b>47 Retail trade...</b>	<b>−0.4</b>	<b>1.7</b>

\* Econometric estimate from a set of sources available within 30 days after the end of the reference month

Source: INSEE