

Informations Rapides

11 mars 2013 - n° 56

Main indicators



Industrial Production Indices – January 2013

In January 2013, manufacturing output decreased (-1.4%)

Warning : from January 2013, the index industrial production is base 2010 and referenced to 2010.

In January 2013, **manufacturing output** decreased (-1.4%). Output decreased also in **industry as a whole** (-1.2%).

Over the last three months, manufacturing output went down by 2.1%...

Over the last three months (q-o-q), output went down in the manufacturing sector (-2.1%), as well as industry as a whole (-1.5%).

Output declined in *other manufacturing* (-2.1%), in the *manufacture of transport equipment* (-4.2%) as well as in the *manufacture of electrical and electronic equipment* (-1.3%) and in the *manufacture of food products and beverages* (-1.1%). Output declined strongly in the *manufacture of coke and refined petroleum products* (-6,4%).

...and was lower than its last year's level by 4.6%.

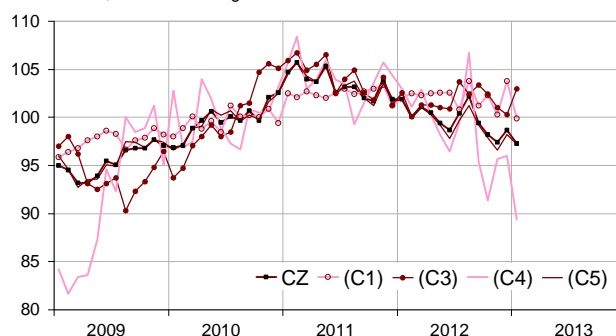
Manufacturing output fell by 4.6% (y-o-y).

Output went down sharply in *other manufacturing* (-4.9%), in the *manufacture of transport equipment* (-10.2%). To a lesser extent, it decreased also in the *manufacture of electrical and electronic equipment and machine equipment* (-1.2%). It declined dramatically in the *manufacture of coke and refined petroleum products* (-16.8%).

Please note: all the series are adjusted for seasonal variations (SA) and the number of working days (WDA).

Monthly industrial Production indexes

2010 based, SA-WDA changes in %



Legend : CZ : Manufacturing - (C1) : Manufacture of food products and beverages - (C3) : Electrical and electronic equipment; machine equipment - (C4) : Manufacture of transport equipment - (C5) : Other manufacturing
Sources : Insee, SSP, SOeS

Variation of the Industrial Production

2010 based, SA-WDA changes in %

NA : A10, (A17)	Jan. / Dec.	Dec. / Nov.	Q-o-Q change	Year on year change (1)
BE: INDUSTRY	-1,2	0,9	-1,5	-3,3
CZ: Manufacturing	-1,4	1,3	-2,1	-4,6
(C1): Manufacture of food products and beverages	-3,8	3,5	-1,1	-0,8
(C2): Manufacture of coke and refined petroleum products	0,7	-2,2	-6,4	-16,8
(C3): Electrical and electronic equipment; machine equipment	2,7	-0,7	-1,3	-1,2
(C4): Manufacture of transport equipment	-6,9	0,3	-4,2	-10,2
(C5): Other manufacturing	-1,0	1,7	-2,1	-4,9
(DE): Mining and quarrying; energy; water supply; waste management	-0,2	-1,0	1,0	2,9
FZ: CONSTRUCTION	-4,0	0,7	-2,0	-5,4

(1) Last three months / three previous months
(2) Last three months / three same months of previous year
The codes correspond to the level of aggregation A 10 (A 17) of the "NA" aggregate classification based on NAF rev.2.
Sources : INSEE, SSP, SOeS

Variation of the Industrial Production

2010 based, SA-WDA changes in %

	Jan. 2013	Jan. / Dec.	Dec. / Nov.	Quar- ter on quar- ter chang e
NA : A10, (A17), [A38 ou A64]				
BE: INDUSTRY	97,0	-1,2	0,9	-1,5
CZ: Manufacturing	97,3	-1,4	1,3	-2,1
(C1): Man. of food products and beverages	99,9	-3,8	3,5	-1,1
(C2): Man. of coke and refined petroleum products	81,3	0,7	-2,2	-6,4
(C3): Electrical and electronic equipment; machine equipment	103,0	2,7	-0,7	-1,3
[CI] Man. of computer, electronic and optical products	104,5	7,6	-0,1	0,2
[CJ] Man. of electrical equipment	95,7	1,3	-1,6	-3,8
[CK] Man. of machinery and equipment n.e.c. (1)	106,6	0,7	-0,5	-0,7
(C4): Man. of transport equipment	89,4	-6,9	0,3	-4,2
[CL1] Man. of motor vehicles, trailers and semi-trailers	77,7	-13,5	8,8	-9,1
[CL2] Man. of other transport equipment	102,7	-0,3	-6,9	0,7
(C5): Other manufacturing	97,2	-1,0	1,7	-2,1
[CB] Man. of textiles, wearing apparel, leather and related products	98,3	-1,8	-2,6	-2,2
[CC] Man. of wood and paper products; printing and reproduction of recorded media	91,6	-1,4	4,1	-0,9
[CE] Man. of chemicals and chemical products	107,7	0,1	1,9	0,8
[CF] Man. of basic pharmaceutical products and pharmaceutical preparations	100,1	0,3	0,1	-0,1
[CG] Man. of rubber and plastics products, and other non-metallic mineral products	92,4	-2,3	1,6	-2,4
[CH] Man. of basic metals and fabricated metal products, except machinery and equipment	94,9	-1,9	3,0	-4,8
[CM] Other manufacturing; repair and installation of machinery and equipment	100,2	0,2	0,4	-1,0
(DE): Mining and quarrying; energy; water supply; waste management	95,8	-0,2	-1,0	1,0
[BZ] Mining and quarrying	93,1	-4,3	-0,8	0,0
[DZ] Electricity, gas, steam and air-conditioning supply	95,1	0,1	-1,2	2,1
[EZ] Water supply; sewerage, waste management and remediation	102,1	0,1	-0,4	-5,5
FZ: CONSTRUCTION	94,7	-4,0	0,7	-2,0
MIGs (2)				
Capital goods	98,1	-1,3	0,2	-2,0
Intermediate goods	94,9	-1,5	1,9	-2,9
Consumer durables	102,8	-0,1	2,1	-1,9
Consumer non-durables	100,7	-1,9	2,0	-0,7

(1) n.e.c. : not elsewhere classifiable

(2) Main industrial groupings : definition in Commission regulation EC of 14 June 2007

Sources : Insee, SSP, SOeS

Output fell dramatically in the manufacture of transport equipment (-6.9%).

Output fell dramatically in the *manufacture of other transport equipment* (-13.5%). Meanwhile, it decreased slightly in the *manufacture of motor vehicles, trailers and semi-trailers* (-0.3%).

Output decreased in "other manufacturing" (-1.0%)...

Output declined in the *manufacture of basic metals and fabricated metal products, except machinery and equipment* (-1.9%), in the *manufacture of rubber and plastics products, and other non-metallic mineral products* (-2.3%), in the *manufacture of wood and paper products; printing and reproduction of record* (-1.4%) as well as in the *manufacture of textiles, wearing apparel, leather and related products* (-1.8%).

...and in the manufacture of food products and beverages (-3.8%).

Output dropped in the *manufacture of food products and beverages* (-3.8%) after a rise in December mainly due to a high level of beer sales before the raise of the tax.

Output increased in the manufacture of electrical and electronic equipment, machine equipment (+2.7%).

Output soared by 7.6% in the *manufacture of computer, electronic and optical products*. Output improved in a less sustained pace in the *manufacture of electrical equipment* (+1.3%) and in the *manufacture of machinery and equipment n.e.c.* (+0.7%).

• Revisions: switch to base 2010.

Measure of variations' revisions

(in point %)

NA : A10, (A17)	Déc. / Nov.	Nov. / Oct.	T4 2012 / T3 2012	T3 2012 / T2 2012	2012 / 2011
BE: INDUSTRY	1.04	-0.76	-0.10	0.46	-0.46
CZ: Manufacturing	1.22	-0.93	-0.03	0.35	-0.80
(C1): Man. of food products and beverages	1.60	-1.48	-0.59	-0.65	-0.77
(C2): Man. of coke and refined petroleum products	-0.76	0.46	0.09	-0.03	0.06
(C3): Electrical and electronic equipment; machine equipment	0.23	0.11	0.45	0.86	-0.18
(C4): Man. of transport equipment	1.65	-0.66	-0.60	-0.19	-1.14
(C5): Other manufacturing	1.31	-0.86	0.10	0.64	-0.78
(DE) : Industries extractives, énergie, eau	-0.10	-0.44	-1.26	2.41	0.15
FZ : Construction	-0.47	-0.29	-0.14	-0.03	0.14

Note of reading : in the manufacturing, the SA-WDA evolution between November and December is revised by +1.22 point.

Sources : Insee, SSP, SOeS

Learn more:

- Complementary data (long series) and metadata (methodology, linked internet pages...) are available on the HTML page of this index: <http://www.insee.fr/en/themes/info-rapide.asp?id=10>
- Historical data are available on the BDM: [G1397](#), [G1398](#), [G1400](#), [G1401](#), [G1411](#).
- Press contact: bureau-de-presse@insee.fr

Next issue: April 10 2013, 8:45 AM