

# Informations *Rapides*



10 octobre 2011 - n° 248 **CONJONCTURE**

## Main indicators

### ■ Industrial Production Indices – August 2011

## In August 2011, manufacturing output increased (+0.7%)

In August 2011, **manufacturing output** increased in volume (+0.7%). It had increased at a more sustained pace in July 2011 (+1.8%).

In overall industrial production, output increased as well (+0.5%).

### **In the last three months, manufacturing output increased (+0.5%)...**

In the last three months (quarter-on-quarter change), output increased in the manufacturing sector (+0.5%, q-o-q) and in the industry as a whole (+1.0%).

Output increased in the *electrical, electronic equipment and machine equipment* (+2.2%). It was almost stable in the other sectors.

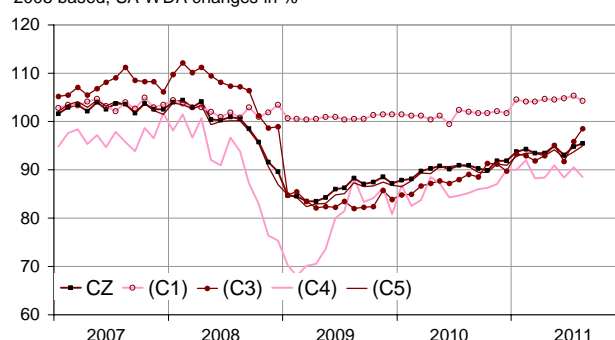
### **... and exceeded it's last year's level by 4.2%**

Manufacturing output rose by 4.2% (y-o-y). It strongly increased in the "*other manufacturing*" (+3.2%), in the *electrical and electronic equipment and machine equipment* (+8.2%) and in the *manufacture of transport equipment* (+5.3%).

*Please note: all the series are adjusted for seasonal variations (SA) and the number of working days (WDA).*

### Monthly industrial production indexes

2005 based, SA-WDA changes in %



Legend : CZ : Manufacturing - (C1) : Manufacture of food products and beverages - (C3) : Electrical and electronic equipment; machine equipment - (C4) : Manufacture of transport equipment - (C5) : Other manufacturing

Sources : Insee, SSP, SOeS

### Variation of industrial production by activity (NA)

2005 based, SA-WDA changes in %

NA : A10, (A17)	Aug. / July	July / June	Quarter on quarter change	Year on year change (1)
<b>BE: INDUSTRY</b>	<b>0,5</b>	<b>1,8</b>	<b>1,0</b>	<b>3,5</b>
<b>CZ: MANUFACTURING</b>	<b>0,7</b>	<b>1,8</b>	<b>0,5</b>	<b>4,2</b>
(C1): Manufacture of food products and beverages	-0,9	0,5	0,3	3,5
(C2): Manufacture of coke and refined petroleum products	2,0	-4,6	0,1	-4,4
(C3): Electrical and electronic equipment; machine equipment	2,7	4,6	2,2	8,2
(C4): Manufacture of transport equipment	-2,2	2,5	0,0	5,3
(C5): Other manufacturing	1,3	1,3	0,2	3,2
<b>(DE): Mining and quarrying; energy; water supply; waste management</b>	<b>-0,1</b>	<b>1,9</b>	<b>4,2</b>	<b>-1,3</b>
<b>FZ: CONSTRUCTION</b>	<b>3,2</b>	<b>0,3</b>	<b>-0,5</b>	<b>-0,1</b>

(1) Last three months / three same months of previous year  
The codes correspond to the level of aggregation A 10 (A 17) of the "NA" aggregate classification based on NAF rev.2.

Sources : INSEE, SSP, SOeS

**In August 2011, output increased in the « other manufacturing » (+1.3%) ...**

Output increased in the “other manufacturing, repair and installation of machinery and equipment” (+1.9%), in the *manufacture of rubber and plastics products* (+1.7%), in the *manufacture of wood and paper products*; *printing and reproduction of recorded media* (+3.6%) as well as in the *manufacture of basic metals and fabricated metal products* (+1.1%).

**Variation of industrial production**

2005 based, SA-WDA changes in %

NA : A10, (A17), [A38 ou A64]	Aug. 2011	Aug. / July	July / June	Quarter on quarter change
<b>BE: INDUSTRY</b>	<b>95,8</b>	<b>0,5</b>	<b>1,8</b>	<b>1,0</b>
<b>CZ: MANUFACTURING</b>	<b>95,5</b>	<b>0,7</b>	<b>1,8</b>	<b>0,5</b>
(C1): Man. of food products and beverages	104,3	-0,9	0,5	0,3
(C2): Man. of coke and refined petroleum products	75,7	2,0	-4,6	0,1
(C3): Electrical and electronic equipment; machine equipment	98,5	2,7	4,6	2,2
[CI] Man. of computer, electronic and optical products	95,9	-2,0	9,0	0,5
[CJ] Man. of electrical equipment	105,7	2,5	4,2	-1,5
[CK] Man. of machinery and equipment n.e.c. (1)	96,1	6,4	1,6	6,1
(C4): Man. of transport equipment	<b>88,6</b>	<b>-2,2</b>	<b>2,5</b>	<b>0,0</b>
[CL1] Man. of motor vehicles, trailers and semi-trailers	74,7	0,3	1,6	2,4
[CL2] Man. of other transport equipment	117,0	-5,2	3,7	-3,1
(C5): Other manufacturing	<b>94,9</b>	<b>1,3</b>	<b>1,3</b>	<b>0,2</b>
[CB] Man. of textiles, wearing apparel, leather and related products	59,0	-2,5	-1,5	-4,4
[CC] Man. of wood and paper products; printing and reproduction of recorded media	82,9	3,6	-0,6	0,2
[CE] Man. of chemicals and chemical products	113,3	0,4	-1,9	-0,6
[CF] Man. of basic pharmaceutical products and pharmaceutical preparations	119,9	0,7	0,8	2,5
[CG] Man. of rubber and plastics products, and other non-metallic mineral products	90,5	1,7	0,7	-1,5
[CH] Man. of basic metals and fabricated metal products, except machinery and equipment	84,5	1,1	2,2	0,0
[CM] Other manufacturing; repair and installation of machinery and equipment	113,6	1,9	4,5	2,4
(DE): Mining and quarrying; energy; water supply; waste management	<b>98,4</b>	<b>-0,1</b>	<b>1,9</b>	<b>4,2</b>
[BZ] Mining and quarrying	89,6	2,4	4,5	-1,8
[DZ] Electricity, gas, steam and air-conditioning supply	98,8	-0,5	2,2	5,2
[EZ] Water supply; sewerage, waste management and remediation	101,6	1,4	-2,1	-0,2
<b>FZ: CONSTRUCTION</b>	<b>96,9</b>	<b>3,2</b>	<b>0,3</b>	<b>-0,5</b>
<b>MIGs (2)</b>				
Capital goods	86,4	1,0	3,8	2,0
Intermediate goods	84,9	1,1	1,1	-0,8
Consumer durables	78,4	2,1	7,0	3,1
Consumer non-durables	105,4	-0,6	0,5	0,3

(1) n.e.c. : not elsewhere classifiable

(2) Main industrial groupings : definition in Commission regulation EC of 14 June 2007

Sources : Insee, SSP, SOeS

**... and in the manufacture of electrical and electronic equipment, machine equipment**

Output soared in the *manufacture of machinery and equipment n.e.c.* (+6.4%) and in the *manufacture of electrical equipment* (+2.5%). On the opposite, it decreased in the *manufacture of computer, electronic and optical products* (-2.0%).

**On the contrary, it decreased in the manufacture of transport equipment (-2.2%)**

Output decreased in the *manufacture of other transport equipment* (-5.2%). It slightly increased in the *manufacture of motor vehicles, trailers and semi-trailers* (+0.3%).

**• Revisions : +0.4 point in July**

**In July 2011, manufacturing output increased (+1.8%)**

The revisions are due to the revision of raw series in the *manufacture of computer, electronic and optical products* and in the “other manufacturing, repair and installation of machinery and equipment”.

**Measure of variations' revisions**

(in point %)

	July / June	June / May	May / April	Q2 2011 / Q1 2011	2010 / 2009
<b>Industry (BE)</b>	<b>0,32</b>	<b>0,00</b>	<b>-0,22</b>	<b>0,00</b>	<b>0,04</b>
raw serie	0,20	-0,11	-0,22	-0,20	0,01
SA-WDA coefficient	0,12	0,11	0,00	0,20	0,03
<b>Manufacturing (CZ)</b>	<b>0,43</b>	<b>-0,11</b>	<b>0,00</b>	<b>0,04</b>	<b>0,02</b>
raw serie	0,39	-0,20	-0,34	-0,21	0,02
SA-WDA coefficient	0,04	0,09	0,34	0,25	0,00

Note of reading : in the manufacturing, the SA-WDA evolution between June and July is revised by 0.43 point : 0.39 is due to the raw serie's revision and 0.04 to the new calculation of the SA-WDA.

Sources : Insee, SSP, SOeS