

Informations *Rapides*



3 octobre 2011 - n° 241 **CONJONCTURE**

■ Turnover in the retail trade and personal services - July 2011

In July 2011, the turnover declined in accommodation and food service activities and was broadly stable in the retail trade

Every index in this issue is in volume, seasonally and working-day adjusted.

In July 2011, the turnover decreased in *accommodation and food service activities* (−0.6 %). It was stable in the *trade and repair of motor vehicles and motorcycles* or broadly stable in the other sectors : −0.1 % in *household services* and +0.1 % in the *retail trade, except of motor vehicles and motorcycles*.

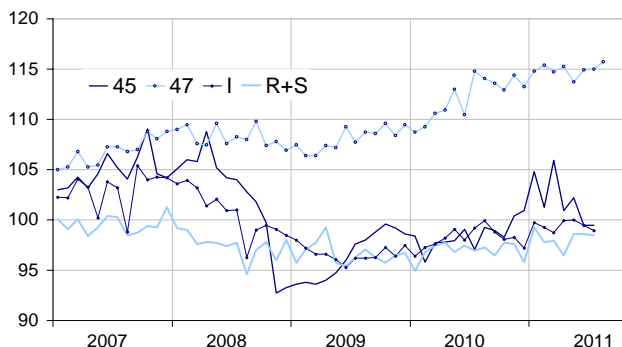
Quarter on quarter (q-o-q), the turnover grew in *household services* (+1.2 %). It was broadly steady, in *accommodation and food service activities* (+0.2 %) whereas it declined in the *trade and repair of motor vehicles and motorcycles* (−2.2 %) and, to a lesser extent, in the *retail trade* (−0.5 %).

Year on year (y-o-y), the turnover expanded in the *trade and repair of motor vehicles and motorcycles* (+2.4 %), in the *retail trade* (+1.6 %), in *households services* (+1.5 %) and in *accommodation and food services activities* (+0.7 %).

According to our estimate, the turnover in the *retail trade* is expected to rise in August 2011 (+0.6 %).

Retail trade and personal services

Turnover indices, volume SA-WDA, Base year 2005



Source : INSEE

Please note that the « retail trade... » chart (47) includes the early estimate for August 2011.

Revisions

The SA-WDA evolution in June has been revised by −0.5 point in *household services*. The variation, initially announced at +0.5 %, has been corrected at 0.0 %. In the same period, the SA-WDA evolution has been revised by −0.1 point in *accommodation and food service activities*. The turnover has been confirmed in the *trade and repair of motor vehicles and motorcycles* and in the *retail trade*.

Monthly turnover indices

SA-WDA volume, Base year 2005

Classification NAF rev. 2	Weight	Change in %			
		July/June	June/May	q-o-q (1)	y-o-y (2)
45 Trade and repair of motor vehicles and motorcycles	1000	0.0	−2.6	−2.2	2.4
47 Retail trade, except of motor vehicles and motorcycles	1000	0.1	1.1	−0.5	1.6
471 Retail sale in non-specialised stores	415	−1.4	0.8	−1.5	−0.6
472 to 477 Retail sale in specialised stores	545	1.1	1.3	0.2	3.0
478 and 479 Retail trade not in stores	40	0.9	−0.5	−2.5	1.4
I Accommodation and food service activities	1000	−0.6	−0.5	0.2	0.7
R+S Households services	1000	−0.1	0.0	1.2	1.5
R Arts, entertainment and recreation	472	0.5	−0.3	3.4	4.7
S Other service activities	528	−0.6	0.4	−0.8	−1.3

(1) Quarter-on-quarter: last three months / three previous months.

(2) Year-on-year: last three months / three same months of the previous year.

The codes correspond to different levels of aggregation of the classification NAF rev.2.

Source: INSEE

Turnover indices: early estimate*

SA-WDA volume, Base year 2005

	Change in %	
	Aug. 2011/July 2011	Aug. 2011/Aug. 2010
47 Retail trade...	0.6	1.4

* Econometric estimate from a set of sources available within 30 days after the end of the reference month

Source: INSEE