

Informations Rapides



10 septembre 2012 - n° 219 CONJONCTURE

Main indicators

Industrial Production Indices – July 2012

In July 2012, manufacturing output increased (+0.9%)

In July 2012, **manufacturing output** increased in volume (+0.9%). It was stable in June.

Output slightly increased in **total industry** (+0.2%).

During the last three months, manufacturing output decreased (-1.0%)...

During the last three months (quarter-on-quarter change), output decreased in the manufacturing sector (-1.0%) as well as in the industry as a whole (-1.5%).

Output decreased in the *manufacture of transport equipment* (-2.7%), in the *other manufacturing* (-0.6%) and in the *manufacture of electrical and electronic equipment* (-1.0%).

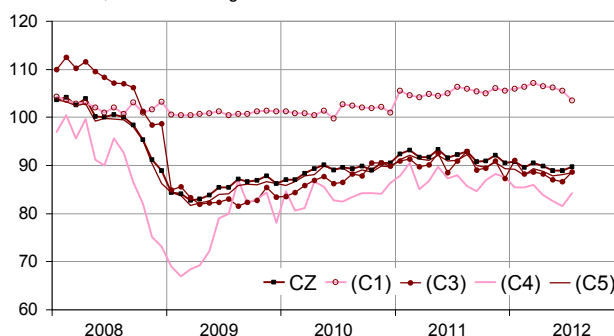
...and was lower than its last year's level by 3.5%

Manufacturing output decreased by 3.1% (y-o-y). It decreased in the *other manufacturing* (-3.6%), in the *manufacture of transport equipment* (-6.3%) and in the *manufacture of electrical and electronic equipment and machine equipment* (-3.5%). The *manufacture of coke and refined petroleum products* decreased as well (-8.8%).

Please note: all the series are adjusted for seasonal variations (SA) and the number of working days (WDA).

Monthly industrial Production indexes

2005 based, SA-WDA changes in %



Legend : CZ : Manufacturing - (C1) : Manufacture of food products and beverages - (C3) : Electrical and electronic equipment; machine equipment - (C4) : Manufacture of transport equipment - (C5) : Other manufacturing

Sources : Insee, SSP, SOeS

Variation of the Industrial Production by activity (NA)

2005 based, SA-WDA changes in %

NA : A10, (A17)	July / June	June / May	Q-o-Q change (1)	Year on year change (2)
BE: INDUSTRY	0,2	0,0	-1,5	-3,2
CZ: MANUFACTURING	0,9	0,0	-1,0	-3,5
(C1): Manufacture of food products and beverages	-1,9	-0,7	-1,5	-0,2
(C2): Manufacture of coke and refined petroleum products	4,3	14,8	5,2	-8,8
(C3): Electrical and electronic equipment; machine equipment	2,3	-0,5	-1,0	-3,5
(C4): Manufacture of transport equipment	3,4	-1,3	-2,7	-6,3
(C5): Other manufacturing	0,5	0,3	-0,6	-3,6
(DE): Mining and quarrying; energy; water supply; waste management	-3,4	-1,1	-4,9	-1,0
FZ: Construction	-0,1	0,7	3,5	-1,9

(1) Last three months / three previous months.

(2) Last three months / three same months of previous year.

The codes correspond to the level of aggregation A 10 (A 17) of the "NA" aggregate classification based on NAF rev.2.

Sources : Insee, SSP, SOeS

Variation of the Industrial Production

2005 based, SA-WDA changes in %

NA : A10, (A17), [A38 ou A64]	July 2012	July / June	June / May	Quarter on quar- ter change
BE: INDUSTRY	90,1	0,2	0,0	-1,5
CZ: MANUFACTURING	89,7	0,9	0,0	-1,0
(C1): Man. of food products and beverages	103,5	-1,9	-0,7	-1,5
(C2): Man. of coke and refined petroleum prod- ucts	74,5	4,3	14,8	5,2
(C3): Electrical and elec- tronic equipment; machine equipment	88,7	2,3	-0,5	-1,0
[CI] Man. of computer, elec- tronic and optical products	91,2	5,6	-4,1	-3,5
[CJ] Man. of electrical equip- ment	96,3	0,6	1,6	0,9
[CK] Man. of machinery and equipment n.e.c. (1)	82,6	1,2	1,1	-0,2
(C4): Man. of transport equipment	84,3	3,4	-1,3	-2,7
[CL1] Man. of motor vehicles, trailers and semi-trailers	64,4	4,2	-2,8	-2,2
[CL2] Man. of other transport equipment	125,0	2,7	0,1	-3,2
(C5): Other manufacturing	88,5	0,5	0,3	-0,6
[CB] Man. of textiles, wearing apparel, leather and related products	59,0	-1,3	2,4	1,7
[CC] Man. of wood and paper products; printing and repro- duction of recorded media	74,8	-2,3	2,1	-0,5
[CE] Man. of chemicals and chemical products	112,3	0,1	-1,1	-0,1
[CF] Man. of basic pharma- ceutical products and phar- maceutical preparations	112,0	-0,1	-0,4	-1,3
[CG] Man. of rubber and plastics products, and other non-metallic mineral prod- ucts	80,3	-0,2	-1,0	-1,5
[CH] Man. of basic metals and fabricated metal prod- ucts, except machinery and equipment	79,0	0,3	0,4	-1,0
[CM] Other manufacturing; repair and installation of machinery and equipment	106,3	3,8	2,4	0,6
(DE): Mining and quarrying; energy; water supply; waste management	93,0	-3,4	-1,1	-4,9
[BZ] Mining and quarrying	87,5	4,0	-3,1	5,6
[DZ] Electricity, gas, steam and air-conditioning supply	91,7	-4,4	-1,3	-6,3
[EZ] Water supply; sewerage, waste management and remediation	108,8	-0,5	1,8	0,3
FZ: Construction	94,4	-0,1	0,7	3,5
MIGs (2)				
Capital goods	89,7	3,7	-0,5	-1,6
Intermediate goods	83,4	-0,2	-0,1	-0,5
Consumer durables	84,0	0,6	2,0	1,4
Consumer non-durables	101,6	-1,3	0,0	-1,2

(1) n.e.c. : not elsewhere classifiable

(2) Main industrial groupings : definition in Commission regula-
tion EC of 14 June 2007

Sources : Insee, SSP, SOeS

Output increased in the manufacture of transport equipment (+3.4%)...

Output increased in the manufacture of motor vehicles, trailers and semi-trailers (+4.2%) and in the manufacture of other transport equipment (+2.7%).

... and in the manufacture of electrical and electronic equipment, machine equipment (+2.3%)

Output strongly increased in the manufacture of computer, electronic and optical products (+5.6%). To a lesser extent, it also increased in the manufacture of machinery and equipment n.e.c. (+1.2%) and in the manufacture of electrical equipment (+0.6%).

It also increased in the « other manufacturing » (+0.5%)

Output strongly increased in the other manufacturing, repair and installation of machinery and equipment (+3.8%). It slightly increased in the manufacture of basic metals and fabricated metal products, except machinery and equipment (+0.3%). Output decreased in the manufacture of wood and paper products; printing and reproduction of record media (-2.3%) and in the manufacture of textiles, wearing apparel, leather and related products (-1.3%).

But output decreased in the manufacture of food products and beverages (-1,9%)

• Revisions: -0.11 in June

Measure of variations' revisions

(in point %)

	June / May	May / April	April / March	Q2 2012 / Q1 2012	2011 / 2010
Industry (BE)	0,00	-0,11	0,11	-0,04	-0,03
Raw serie	-0,08	-0,12	-0,02	-0,12	-0,06
SA-WDA coefficient	0,08	0,01	0,13	0,08	0,03
Manufacturing (CZ)	-0,11	0,00	0,11	0,00	-0,04
Raw serie	-0,07	-0,01	-0,03	-0,15	-0,06
SA-WDA coefficient	-0,04	0,01	0,14	0,15	0,02

Note of reading : in the manufacturing, the SA-WDA evolution between May and June is revised by -0.11 point : -0.07 is due to the raw serie's revision and -0.04 to the new calculation of the SA-WDA.

Sources : Insee, SSP, SOeS

Learn more:

- Complementary data (long series) and metadata (methodology, linked internet pages...) are available on the HTML page of this index: <http://www.insee.fr/en/themes/info-rapide.asp?id=10>
- Historical data are available on the BDM: [G950](#), [G951](#), [G952](#), [G953](#), [G963](#).
- Press contact: bureau-de-presse@insee.fr

Next issue: October 10 2012, 8:45 AM