

Informations *Rapides*

7 mai 2013 - n° 107

Main indicators



■ Industrial Production Indices – March 2013

In March 2013, manufacturing output decreased (-1.0%)

In March 2013, **manufacturing output** decreased (-1.0%), as well as in **industrial production as a whole** (-0.9%).

During the last quarter, manufacturing output decreased (-0.9%)...

During the last quarter (q-o-q), output decreased in the manufacturing sector (-0.9%), as well as industry as a whole (-0.4%).

Output declined in *other manufacturing* (-0.6%), in the *manufacture of transport equipment* (-2.4%), in the *manufacture of food products and beverages* (-2.1%) as well as in the *manufacture of electrical and electronic equipment* (-0.7%). On the contrary, output increased in the *manufacture of coke and refined petroleum products* (+7.9%).

...and was lower than its last year's level by 4.2%.

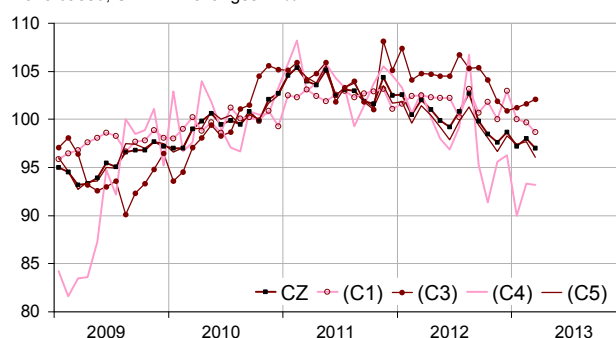
Manufacturing output fell by 4.2% (y-o-y).

Output went down sharply in *other manufacturing* (-3.8%), in the *manufacture of transport equipment* (-9.8%), in the *manufacture of electrical and electronic equipment and machine equipment* (-3.6%) and in the *manufacture of food products and beverages* (-2.6%). On the opposite, manufacturing output bounced by 4.8% in the *manufacture of coke and refined petroleum products*.

Please note: all the series are adjusted for seasonal variations (SA) and the number of working days (WDA).

Monthly industrial Production indexes

2010 based, SA-WDA changes in %



Legend : CZ : Manufacturing - (C1) : Manufacture of food products and beverages - (C3) : Electrical and electronic equipment; machine equipment - (C4) : Manufacture of transport equipment - (C5) : Other manufacturing

Sources : Insee, SSP, SOeS

Variation of the Industrial Production

2010 based, SA-WDA changes in %

NA : A10, (A17)	March / Feb.	Feb. / Jan.	Q-o-Q change	Year on year change (1)
BE: INDUSTRY	-0,9	0,8	-0,4	-3,2
CZ: Manufacturing	-1,0	0,8	-0,9	-4,2
(C1): Manufacture of food products and beverages	-1,0	-0,3	-2,1	-2,6
(C2): Manufacture of coke and refined petroleum products	-3,2	16,6	7,9	4,8
(C3): Electrical and electronic equipment; machine equipment	0,5	0,4	-0,7	-3,6
(C4): Manufacture of transport equipment	-0,1	3,7	-2,4	-9,8
(C5): Other manufacturing	-1,6	0,3	-0,6	-3,8
(DE): Mining and quarrying; energy; water supply; waste management	-0,3	0,8	1,5	1,7
FZ: CONSTRUCTION	-0,7	2,0	-3,8	-2,9

(1) Last three months / three previous months

(2) Last three months / three same months of previous year

The codes correspond to the level of aggregation A 10 (A 17) of the "NA" aggregate classification based on NAF rev.2.

Sources : INSEE, SSP, SOeS

Variation of the Industrial Production

2010 based, SA-WDA changes in %

NA : A10, (A17), [A38 ou A64]	March 2013	March / Feb.	Feb. / Jan.	Quar- ter on quar- ter chang e
BE: INDUSTRY	97,2	-0,9	0,8	-0,4
CZ: Manufacturing	97,0	-1,0	0,8	-0,9
(C1): Man. of food products and beverages	98,7	-1,0	-0,3	-2,1
(C2): Man. of coke and refined petroleum products	92,9	-3,2	16,6	7,9
(C3): Electrical and electronic equipment; machine equipment	102,1	0,5	0,4	-0,7
[CI] Man. of computer, electronic and optical products	105,4	3,2	0,1	5,3
[CJ] Man. of electrical equipment	98,0	0,3	2,5	-1,5
[CK] Man. of machinery and equipment n.e.c. (1)	102,7	-0,9	-0,8	-3,4
(C4): Man. of transport equipment	93,2	-0,1	3,7	-2,4
[CL1] Man. of motor vehicles, trailers and semi-trailers	84,1	4,0	2,7	-4,0
[CL2] Man. of other transport equipment	103,5	-3,6	4,7	-0,9
(C5): Other manufacturing	96,1	-1,6	0,3	-0,6
[CB] Man. of textiles, wearing apparel, leather and related products	93,0	-2,0	-2,8	-6,3
[CC] Man. of wood and paper products; printing and reproduction of recorded media	90,4	-1,5	0,2	0,6
[CE] Man. of chemicals and chemical products	106,2	-1,5	-0,6	-0,4
[CF] Man. of basic pharmaceutical products and pharmaceutical preparations	100,8	0,1	0,3	0,6
[CG] Man. of rubber and plastics products, and other non-metallic mineral products	93,0	-1,1	1,1	-0,7
[CH] Man. of basic metals and fabricated metal products, except machinery and equipment	94,5	-2,2	1,7	-0,6
[CM] Other manufacturing; repair and installation of machinery and equipment	97,0	-2,0	-1,2	-0,8
(DE): Mining and quarrying; energy; water supply; waste management	98,2	-0,3	0,8	1,5
[BZ] Mining and quarrying	92,5	-1,5	0,3	-5,2
[DZ] Electricity, gas, steam and air-conditioning supply	98,1	-0,1	0,8	2,0
[EZ] Water supply; sewerage, waste management and remediation	101,1	-1,0	0,4	0,7
FZ: CONSTRUCTION	94,7	-0,7	2,0	-3,8
MIGs (2)				
Capital goods	97,2	-0,6	0,3	-1,7
Intermediate goods	94,9	-1,5	1,2	-0,6
Consumer durables	102,8	-1,1	1,8	1,1
Consumer non-durables	99,9	-0,8	-0,4	-1,1

(1) n.e.c. : not elsewhere classifiable

(2) Main industrial groupings : definition in Commission regulation EC of 14 June 2007

Sources : Insee, SSP, SOeS

Output decreased in "other manufacturing" (-1.6%)...

Output went down in the *manufacture of basic metals and fabricated metal products, except machinery and equipment* (-2.2%), in *other manufacturing, repair and installation of machinery and equipment* (-2.0%), in the *manufacture of chemicals and chemical products* (-1.5%), in the *manufacture of rubber and plastics products and other non-metallic mineral products* (-1.1%), in the *manufacture of wood and paper products; printing and reproduction of recorded media* (-1.5%) as well as in the *manufacture of textiles, wearing apparel, leather and related products* (-2.0%).

... and in the manufacture of food products and beverages (-1.0%)...

Output declined in the *manufacture of food products and beverages* (-1.0%), because of a decrease in dairy produces and beverages.

Output was almost steady in the manufacture of transport equipment (-0.1%)...

Output dropped in the *manufacture of other transport equipment* (-3.6%) and increased in the *manufacture of motor vehicles, trailers and semi-trailers* (+4.0%).

...and improved in the manufacture of electrical and electronic equipment, machine equipment (+0.5%).

Output increased by 3.2% in the *manufacture of computer, electronic and optical product* and to a lesser extent in the *manufacture of electrical equipment* (+0.3%). Output diminished in the *manufacture of machinery and equipment n.e.c.* (-0.9%).

• Revisions in February

Measure of variations' revisions

(in point %)

	Feb. / Jan.	Jan. / Dec.	Dec. / Nov.	Q4 2012 / Q3 2012	2012 / 2011
Industry (BE)	0,10	-0,20	-0,10	-0,13	0,41
raw serie	0,20	-0,22	-0,35	-0,20	0,42
SA-WDA coefficient	-0,10	0,02	0,25	0,07	-0,01
Manufacturing (CZ)	0,00	-0,20	-0,11	-0,22	0,52
raw serie	0,11	-0,24	-0,32	-0,25	0,53
SA-WDA coefficient	-0,11	0,04	0,21	0,03	-0,01

Note of reading : in the manufacturing, the SA-WDA evolution between January 2013 and February 2013 remains unchanged : the raw serie's revision is offset by the new calculation of the SA-WDA.

Sources : Insee, SSP, SOeS

Learn more:

- Complementary data (long series) and metadata (methodology, linked internet pages...) are available on the HTML page of this index: <http://www.insee.fr/en/themes/info-rapide.asp?id=10>
- Historical data are available on the BDM: [G950](#), [G951](#), [G952](#), [G953](#), [G963](#).
- Press contact: bureau-de-presse@insee.fr

Next issue: June 10 2013, 8:45 AM