

Informations *Rapides*



2 juillet 2012 - n° 168 **CONJONCTURE**

■ Turnover in the wholesale trade and business services - April 2012

In April 2012, the turnover bounced in business support activities and in information and communication

Every index in this issue is in value, seasonally and working-day adjusted.

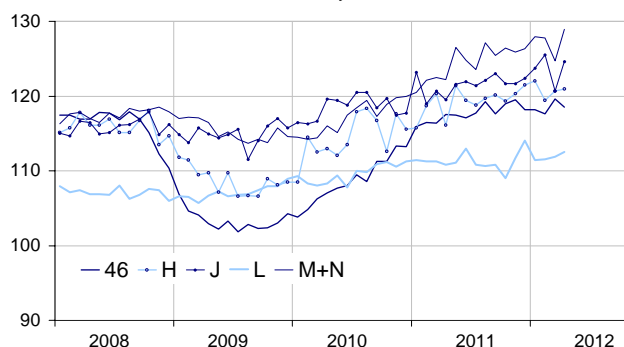
In April 2012, the turnover bounced in *business support activities* (+3.4 %) and in *information and communication* (+3.2 %). It slightly increased in *real estate activities* (+0.5 %) and in *transportation and storage* (+0.2 %). On the contrary, it fell in the *wholesale trade* (−0.9 %).

Quarter on quarter (q-o-q), the turnover grew in *information and communication* (+0.8 %) and in *business support activities* (+0.3 %). It was broadly stable in the *wholesale trade* (−0.1 %). It declined in *transportation and storage* (−0.8 %) and in *real estate activities* (−0.4 %).

Year on year (y-o-y), the turnover rose in *business support activities* (+4.0 %), in *information and communication* (+3.2 %), in *transportation and storage* (+1.7 %), in the *wholesale trade* (+1.5 %) and, to a lesser extent, in *real estate activities* (+0.7 %).

Wholesale trade and business service

Turnover indices, value SA-WDA, Base year 2005



Source : INSEE

Revisions

The SA-WDA evolution in March has been revised by −0.3 point in the *wholesale trade*. The variation, initially announced at +2.0 %, has been corrected at

+1.7 %. The correction is due to the coefficients SA-WDA's updating in the sector of the *wholesale of agricultural raw materials and live animals*. In the same period, the SA-WDA evolution has been revised by +0.3 point in *information and communication*, by +0.3 point in *business support activities*, by −0.2 point in *transportation and storage* and by +0.1 point in *real estate activities*.

Monthly turnover indices

SA-WDA value, Base year 2005

| Classification NAF rev. 2 | Weight | Change in % | | | |
|---|-------------|-----------------|----------------|--------------|--------------|
| | | April/ March | March/ Feb. | q-o-q (1) | y-o-y (2) |
| 46 Wholesale trade, except of motor vehicles and motorcycles | 1000 | −0.9 | 1.7 | −0.1 | 1.5 |
| Wholesale on a fee or contract basis | 166 | 1.8 | −1.8 | −0.1 | 5.8 |
| Wholesale of agricultural raw materials and live animals | 62 | −7.0 | 10.8 | −2.5 | −1.6 |
| Wholesale of food, beverages and tobacco | 183 | 0.9 | −0.1 | 1.6 | 2.5 |
| Wholesale of household goods | 173 | 0.2 | 0.1 | −0.3 | 1.1 |
| Wholesale of professional equipment goods | 215 | −1.7 | 1.1 | −0.6 | 1.3 |
| Other specialized wholesale | 193 | −2.7 | 5.0 | 0.1 | −1.2 |
| H Transportation and storage | 1000 | 0.2 | 1.1 | −0.8 | 1.7 |
| J Information and communication | 1000 | 3.2 | −3.8 | 0.8 | 3.2 |
| L Real estate activities | 1000 | 0.5 | 0.4 | −0.4 | 0.7 |
| M+N Business support activities | 1000 | 3.4 | −2.4 | 0.3 | 4.0 |
| M Professional, scientific and technical activities | 626 | 1.7 | −0.8 | 0.3 | 4.1 |
| N Administrative and support service activities | 374 | 6.6 | −5.2 | 0.5 | 3.8 |

(1) Quarter-on-quarter: last three months / three previous months.

(2) Year-on-year: last three months / three same months of the previous year.

The codes correspond to different levels of aggregation of the classification NAF rev. 2.

Source : INSEE