

Informations Rapides



2 juillet 2012 - n° 167 **CONJONCTURE**

■ Turnover in the retail trade and personal services - April 2012

In April 2012, the turnover fell in accommodation and food service activities, in the retail trade and in the household services

Every index in this issue is in volume, seasonally and working-day adjusted.

In April 2012, the turnover decreased in *accommodation and food service activities* (−3.2 %), in the *retail trade, except of motor vehicles and motorcycles* (−2.1 %), in the *household services* (−1.8 %) and, to a lesser extent, in the *trade and repair of motor vehicles and motorcycles* (−0.4 %).

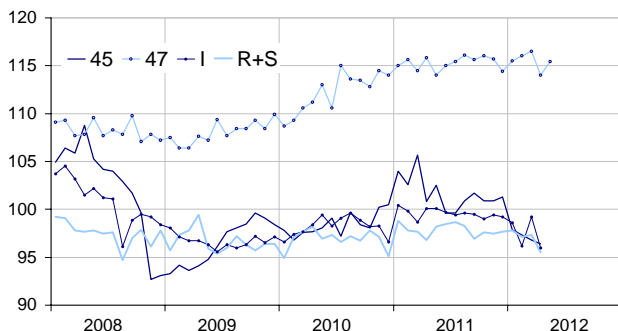
Quarter on quarter (q-o-q), the turnover declined in the *trade and repair of motor vehicles and motorcycles* (−3.2 %), in *accommodation and food service activities* (−2.0 %) and in the *household services* (−1.1 %). On the contrary, it slightly grew in the *retail trade* (+0.3 %).

Year on year (y-o-y), the turnover dropped in the *trade and repair of motor vehicles and motorcycles* (−6.0 %). It decreased in *accommodation and food services activities* (−2.2 %) and in the *household services* (−0.8 %). It was broadly stable in the *retail trade* (+0.2 %).

According to our estimate, the turnover in the *retail trade* is expected to bounce in May 2012 (+1.1 %).

Retail trade and personal services

Turnover indices, volume SA-WDA, Base year 2005



Please note that the « retail trade... » chart (47) includes the early estimate for May 2012.

Source : INSEE

Revisions

The SA-WDA evolution in March has been revised by +0.2 point in *accommodation and food service activities*. The variation, initially announced at +2.9 %, has been corrected at +3.1 %. The correction is due to the coefficients SA-WDA's updating in the sector of *beverage serving activities*. In the same period, the SA-WDA evolution has been revised by +0.1 point in the *trade and repair of motor vehicles and motorcycles*, by +0.1 point in the *household services* and by −0.1 point in the *retail trade, except of motor vehicles and motorcycles*.

Monthly turnover indices

SA-WDA volume, Base year 2005

Classification NAF rev. 2	Weight	Change in %			
		April/March	March/Feb.	q-o-q (1)	y-o-y (2)
45 Trade and repair of motor vehicles and motorcycles	1000	−0.4	−0.5	−3.2	−6.0
47 Retail trade, except of motor vehicles and motorcycles	1000	−2.1	0.4	0.3	0.2
471 Retail sale in non-specialized stores	415	−1.0	−0.7	0.4	−1.5
472 to 477 Retail sale in specialized stores	545	−2.8	1.2	0.2	1.2
478 and 479 Retail trade not in stores	40	−1.2	−0.6	−1.3	−1.1
I Accommodation and food service activities	1000	−3.2	3.1	−2.0	−2.4
R+S Household services	1000	−1.8	0.2	−1.1	−0.8
R Arts, entertainment and recreation	472	0.3	−2.4	−1.7	−0.5
S Other service activities	528	−3.9	2.9	−0.5	−1.1

(1) Quarter-on-quarter: last three months / three previous months.

(2) Year-on-year: last three months / three same months of the previous year.

The codes correspond to different levels of aggregation of the classification NAF rev.2.

Source: INSEE

Turnover indices: early estimate*

SA-WDA volume, Base year 2005

	Change in %	
	May 2012/ April 2012	May 2012/ May 2011
47 Retail trade...	1.1	1.2

* Econometric estimate from a set of sources available within 30 days after the end of the reference month

Source: INSEE