

Informations *Rapides*



10 décembre 2012 - n° 300 **CONJONCTURE**

Main indicators

■ Industrial Production Indices – October 2012

In October 2012, manufacturing output decreased (-0.9%)

In October 2012, **manufacturing output** decreased again (-0.9 %). Output also decreased in **industry as a whole** (-0.7%).

During the last three months, manufacturing output was almost stable (+0.1%)...

During the last three months (q-o-q), output was almost stable in the manufacturing sector (+0.1%), as well as industry as a whole (-0.1%).

Output improved in the *manufacture of food products and beverages* (+1.0%), in the *manufacture of electrical and electronic equipment* (+0.5%) and in the *manufacture of transport equipment* (+0.5%). On the other hand, output declined moderately in *other manufacturing* (-0.3%). It declined in the *manufacture of coke and refined petroleum products* (-2,1 %).

...and was lower than its last year's level by 2.3%.

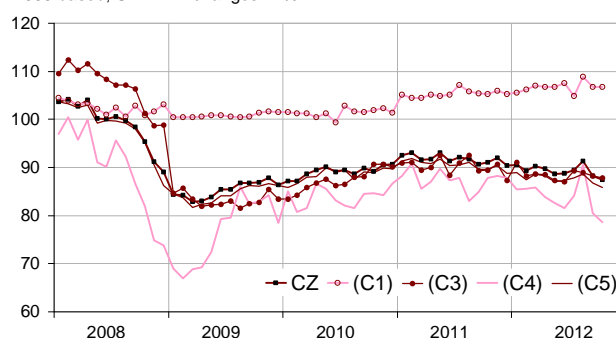
Manufacturing output fell by 2.3% (y-o-y).

Output went down in *other manufacturing* (-3.3%), in the *manufacture of electrical and electronic equipment and machine equipment* (-2.4%) and in the *manufacture of transport equipment* (-2.4%). It declined sharply in the *manufacture of coke and refined petroleum products* (-9.9%).

Please note: all the series are adjusted for seasonal variations (SA) and the number of working days (WDA).

Monthly industrial Production indexes

2005 based, SA-WDA changes in %



Legend : CZ : Manufacturing - (C1) : Manufacture of food products and beverages - (C3) : Electrical and electronic equipment; machine equipment - (C4) : Manufacture of transport equipment - (C5) : Other manufacturing

Sources : Insee, SSP, SOeS

Variation of the Industrial Production

2005 based, SA-WDA changes in %

NA : A10, (A17)	Oct. / Sept.	Sept. / Aug.	Q-o-Q change	Year on year change (1)
BE: INDUSTRY	-0,7	-2,7	-0,1	-2,4
CZ: Manufacturing	-0,9	-3,4	0,1	-2,3
(C1): Manufacture of food products and beverages	0,1	-2,0	1,0	1,9
(C2): Manufacture of coke and refined petroleum products	3,6	11,2	-2,1	-9,9
(C3): Electrical and electronic equipment; machine equipment	-0,5	-0,8	0,5	-2,4
(C4): Manufacture of transport equipment	-2,4	11,0	0,5	-2,4
(C5): Other manufacturing	-1,2	-2,1	-0,3	-3,3
DE: Mining and quarrying; energy; water supply; waste management	1,7	0,8	-1,3	-2,4
FZ: CONSTRUCTION	-1,1	-0,5	0,1	-1,8

(1) Last three months / three previous months

(2) Last three months / three same months of previous year

The codes correspond to the level of aggregation A 10 (A 17) of the "NA" aggregate classification based on NAF rev.2.

Sources : INSEE, SSP, SOeS

Variation of the Industrial Production

2005 based, SA-WDA changes in %

	Oct. 2012	Oct. / Sept.	Sept. / Aug.	Quarter on quarter change
NA : A10, (A17), [A38 ou A64]	88,5	-0,7	-2,7	-0,1
BE: INDUSTRY	87,5	-0,9	-3,4	0,1
CZ: Manufacturing	106,8	0,1	-2,0	1,0
(C1): Man. of food products and beverages	66,5	3,6	-11,2	-2,1
(C2): Man. of coke and refined petroleum products	87,8	-0,5	-0,8	0,5
(C3): Electrical and electronic equipment; machine equipment	88,0	0,7	-3,2	-0,4
[CI] Man. of computer, electronic and optical products	94,6	-3,4	2,2	0,3
[CJ] Man. of electrical equipment	83,7	0,5	-0,7	1,4
[CK] Man. of machinery and equipment n.e.c. (1)	78,6	-2,4	-11,0	0,5
(C4): Man. of transport equipment	58,2	-4,7	-15,8	0,7
[CL1] Man. of motor vehicles, trailers and semi-trailers	120,1	0,2	-5,6	0,2
[CL2] Man. of other transport equipment	85,8	-1,2	-2,1	-0,3
(C5): Other manufacturing	58,2	3,4	-5,2	-1,0
[CB] Man. of textiles, wearing apparel, leather and related products	73,6	0,0	-2,5	-0,4
[CC] Man. of wood and paper products; printing and reproduction of recorded media	108,6	-1,4	1,7	-2,5
[CE] Man. of chemicals and chemical products	110,3	-0,2	0,0	-0,2
[CF] Man. of basic pharmaceutical products and pharmaceutical preparations	77,8	-3,5	-3,1	0,1
[CG] Man. of rubber and plastics products, and other non-metallic mineral products	76,8	-1,5	-3,9	-0,2
[CH] Man. of basic metals and fabricated metal products, except machinery and equipment	100,4	-0,7	-1,7	1,0
[CM] Other manufacturing; repair and installation of machinery and equipment	95,6	1,7	0,8	-1,3
(DE): Mining and quarrying; energy; water supply; waste management	84,9	5,2	-8,6	-2,6
[BZ] Mining and quarrying	95,0	1,6	2,1	-1,4
[DZ] Electricity, gas, steam and air-conditioning supply	109,8	0,2	-2,3	0,6
[EZ] Water supply; sewerage, waste management and remediation	94,1	-1,1	-0,5	0,1
FZ: CONSTRUCTION	94,1	-1,1	-0,5	0,1
MIGs (2)				
Capital goods	85,8	-0,9	-5,8	1,0
Intermediate goods	81,1	-2,1	-2,6	-0,6
Consumer durables	79,6	-2,8	-1,7	-1,7
Consumer non-durables	102,9	0,6	-1,0	0,3

(1) n.e.c. : not elsewhere classifiable

(2) Main industrial groupings : definition in Commission regulation EC of 14 June 2007

Sources : Insee, SSP, SOeS

Output decreased in "other manufacturing" (-1.2%)...

Output went down sharply in the *manufacture of rubber and plastics products, and other non-metallic mineral products* (-3.5%). It decreased in a less sustained pace in the *manufacture of basic metals and fabricated metal products, except machinery and equipment* (-1.5%), in the *manufacture of chemicals and chemical products* (-1.4%) and in *other manufacturing, repair and installation of machinery and equipment* (-0.7%). Meanwhile, output went up in the *manufacture of textiles, wearing apparel, leather and related products* (+3.4%) and was stable in the *manufacture of wood and paper products; printing and reproduction of record*.

... in the manufacture of transport equipment (-2.4%) ...

Output decreased strongly in the *manufacture of motor vehicles, trailers and semi-trailers* (-4.7%). It increased slightly in the *manufacture of other transport equipment* (+0.2%).

... and to a lesser extent in the manufacture of electrical and electronic equipment, machine equipment (-0.5%).

Output went down in the *manufacture of electrical equipment* (-3.4%). However, it improved in the *manufacture of computer, electronic and optical products* (+0.7%) and in the *manufacture of machinery and equipment n.e.c.* (+0.5%).

Output increased in the manufacture of coke and refined petroleum products (+3.6%).

Output partially recovered in the *manufacture of coke and refined petroleum products* (+3.6%), after a strong decrease in September (-11,2%).

• Revisions: -0.23 in September

Measure of variations' revisions

(in point %)

	Sept. / Aug.	Aug. / July	July / June	Q3 2012 / Q2 2012	2011 / 2010
Industry (BE)	-0,01	-0,11	0,00	-0,15	-0,04
raw serie	-0,14	0,00	0,00	-0,04	-0,02
SA-WDA coefficient	0,13	-0,11	0,00	-0,11	-0,02
Manufacturing (CZ)	-0,23	0,00	0,00	-0,15	-0,03
raw serie	0,00	0,00	0,00	0,00	-0,01
SA-WDA coefficient	-0,23	0,00	0,00	-0,15	-0,02

Note of reading : in the manufacturing, the SA-WDA evolution between August and September is revised by -0.23 point : 0.00 is due to the raw serie's revision and -0.23 to the new calculation of the SA-WDA.

Sources : Insee, SSP, SOeS

Learn more:

- Complementary data (long series) and metadata (methodology, linked internet pages...) are available on the HTML page of this index: <http://www.insee.fr/en/themes/info-rapide.asp?id=10>
- Historical data are available on the BDM: [G950](#), [G951](#), [G952](#), [G953](#), [G963](#).
- Press contact: bureau-de-presse@insee.fr

Next issue: January 10 2013, 8:45 AM