

Informations *Rapides*



9 novembre 2012 - n° 274 **CONJONCTURE**

Main indicators

■ Industrial Production Indices – September 2012

In September 2012, manufacturing output decreased strongly (-3.2%)

In September 2012, **manufacturing output** decreased strongly in volume (-3.2%). It rose in August (+2.1%). Output decreased in **industry as a whole** (-2.7%).

During the third quarter, manufacturing output improved (+0.9%)...

During the third quarter (q-o-q), output improved in the manufacturing sector by 0.9%, whereas industry as a whole stayed stable.

Output increased in the *manufacture of transport equipment* (+3.2%), in *other manufacturing* (+0.5%) and in the *manufacture of electrical and electronic equipment* (+1.2%). Output rose strongly in the *manufacture of coke and refined petroleum products* (+4.9%).

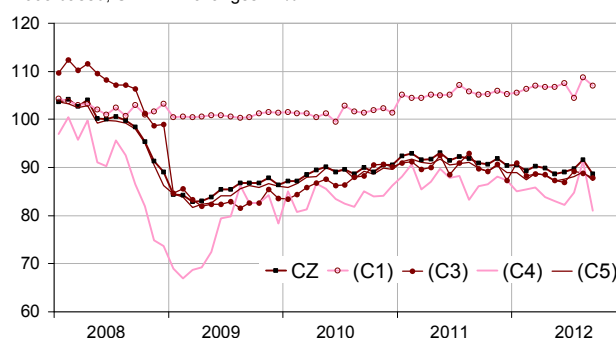
...but was lower than its last year's level by 1.9%

Manufacturing output decreased by 1.9% (y-o-y). It decreased in *other manufacturing* (-2.6%) and in the *manufacture of electrical and electronic equipment and machine equipment* (-2.8%). It declined sharply in the *manufacture of coke and refined petroleum products* (-5.3%). To a lesser extent, it also decreased in the *manufacture of transport equipment* (-0.2%).

Please note: all the series are adjusted for seasonal variations (SA) and the number of working days (WDA).

Monthly industrial Production indexes

2005 based, SA-WDA changes in %



Legend : CZ : Manufacturing - (C1) : Manufacture of food products and beverages - (C3) : Electrical and electronic equipment; machine equipment - (C4) : Manufacture of transport equipment - (C5) : Other manufacturing

Sources : Insee, SSP, SOeS

Variation of the Industrial Production

2005 based, SA-WDA changes in %

NA : A10, (A17)	Sept. / Aug.	Aug. / July	Q-o-Q change	Year on year change (1)
BE: INDUSTRY	-2.7	1.9	0.0	-2.1
CZ: Manufacturing	-3.2	2.1	0.9	-1.9
(C1): Manufacture of food products and beverages	-1.6	4.0	-0.2	0.6
(C2): Manufacture of coke and refined petroleum products	-12.1	-2.6	4.9	-5.3
(C3): Electrical and electronic equipment; machine equipment	-1.0	-0.4	1.2	-2.8
(C4): Manufacture of transport equipment	-11.3	7.7	3.2	-0.2
(C5): Other manufacturing	-2.0	1.1	0.5	-2.6
DE: Mining and quarrying; energy; water supply; waste management	0.6	0.0	-6.0	-3.7
FZ: CONSTRUCTION	-0.5	0.4	0.9	-1.1

(1) Last three months / three previous months

(2) Last three months / three same months of previous year

The codes correspond to the level of aggregation A 10 (A 17) of the "NA" aggregate classification based on NAF rev.2.

Sources : INSEE, SSP, SOeS

Variation of the Industrial Production

2005 based, SA-WDA changes in %

NA : A10, (A17), [A38 ou A64]	Sept. 2012	Sept. / Aug.	Aug. / July	Quar- ter on quar- ter chang e
BE: INDUSTRY	89.4	-2.7	1.9	0.0
CZ: Manufacturing	88.7	-3.2	2.1	0.9
(C1): Man. of food products and beverages	107.0	-1.6	4.0	-0.2
(C2): Man. of coke and refined petroleum products	63.4	-12.1	-2.6	4.9
(C3): Electrical and electronic equipment; machine equipment	87.9	-1.0	-0.4	1.2
[CI] Man. of computer, electronic and optical products	87.5	-3.1	-1.0	0.3
[CJ] Man. of electrical equipment	98.2	1.8	-0.5	2.2
[CK] Man. of machinery and equipment n.e.c. (1)	82.3	-1.2	0.1	1.4
(C4): Man. of transport equipment	81.0	-11.3	7.7	3.2
[CL1] Man. of motor vehicles, trailers and semi-trailers	61.5	-16.2	12.7	4.3
[CL2] Man. of other transport equipment	120.7	-5.5	2.3	2.0
(C5): Other manufacturing	87.3	-2.0	1.1	0.5
[CB] Man. of textiles, wearing apparel, leather and related products	56.6	-4.6	1.0	-0.1
[CC] Man. of wood and paper products; printing and reproduction of recorded media	73.4	-2.9	2.2	-0.7
[CE] Man. of chemicals and chemical products	110.5	1.9	-2.7	-2.3
[CF] Man. of basic pharmaceutical products and pharmaceutical preparations	114.3	0.6	0.5	0.9
[CG] Man. of rubber and plastics products, and other non-metallic mineral products	80.9	-3.0	3.7	0.2
[CH] Man. of basic metals and fabricated metal products, except machinery and equipment	77.8	-4.1	2.4	0.5
[CM] Other manufacturing; repair and installation of machinery and equipment	101.6	-1.2	-1.0	3.1
(DE): Mining and quarrying; energy; water supply; waste management	94.1	0.6	0.0	-6.0
[BZ] Mining and quarrying	81.6	-8.1	-2.0	0.4
[DZ] Electricity, gas, steam and air-conditioning supply	93.4	1.9	-0.1	-7.5
[EZ] Water supply; sewerage, waste management and remediation	109.9	-3.0	2.0	2.4
FZ: CONSTRUCTION	95.4	-0.5	0.4	0.9
MIGs (2)				
Capital goods	86.7	-5.9	2.9	2.6
Intermediate goods	82.9	-2.7	2.0	0.0
Consumer durables	82.7	-1.7	-0.5	1.7
Consumer non-durables	103.3	-0.5	1.7	-0.2

(1) n.e.c. : not elsewhere classifiable

(2) Main industrial groupings : definition in Commission regulation EC of 14 June 2007

Sources : Insee, SSP, SOeS

Output decreased sharply in the manufacture of transport equipment (-11.3%)

Output decreased sharply in the manufacture of motor vehicles, trailers and semi-trailers (-16.2%). It also decreased in the manufacture of other transport equipment (-5.5%).

Output decreased in "other manufacturing" (-2.0%)...

Output went down in the manufacture of basic metals and fabricated metal products, except machinery and equipment (-4.1%), in the manufacture of rubber and plastics products, and other non-metallic mineral products (-3.0%), in the manufacture of wood and paper products; printing and reproduction of record media (-2.9%), in other manufacturing, repair and installation of machinery and equipment (-1.2%) and in the manufacture of textiles, wearing apparel, leather and related products (-4.6%).

... and in the manufacture of food products and beverages (-1.6%)

Output went down in the manufacture of food products and beverages by 1.6%, due to a fall of oil production and a decrease of beverages production, after the heatwave observed in August.

Output fall in the manufacture of coke and refined petroleum products (-12.1%)

Output fall in the manufacture of coke and refined petroleum products (-12.1%), because of maintenance operations in a refinery.

It decreased moderately in the manufacture of electrical and electronic equipment, machine equipment (-1.0%)

Output went down in the manufacture of computer, electronic and optical products (-3.1%), in the manufacture of machinery and equipment n.e.c. (-1.2%). On the contrary, output increased in the manufacture of electrical equipment (+1.8%).

• Revisions: +0.35 in August

Measure of variations' revisions

	Aug. / July	July / June	June / May	Q2 2012 / Q1 2012	2011 / 2010
Industry (BE)	0.34	-0.33	0.11	-0.11	-0.18
raw serie	0.17	-0.01	-0.11	0.09	-0.21
SA-WDA coefficient	0.17	-0.32	0.22	-0.20	0.03
Manufacturing (CZ)	0.35	-0.22	0.00	0.00	-0.24
raw serie	0.27	-0.01	0.03	0.07	-0.24
SA-WDA coefficient	0.08	-0.21	-0.03	-0.07	0.00

Note of reading : in the manufacturing, the SA-WDA evolution between July and August is revised by 0.35 point : 0.27 is due to the raw serie's revision and 0.08 to the new calculation of the SA-WDA.

Sources : Insee, SSP, SOeS

Learn more:

- Complementary data (long series) and metadata (methodology, linked internet pages...) are available on the HTML page of this index: <http://www.insee.fr/en/themes/info-rapide.asp?id=10>
- Historical data are available on the BDM: [G950](#), [G951](#), [G952](#), [G953](#), [G963](#).
- Press contact: bureau-de-presse@insee.fr

Next issue: December 10 2012, 8:45 AM