

Informations *Rapides*

29 avril 2013 - n° 102



■ Turnover in the wholesale trade and business services - February 2013

In February 2013, the turnover went down in the wholesale trade, except for motor vehicles and motorcycles but took off in business services

Every index in this issue is in value, seasonally and working-day adjusted (SA-WDA).

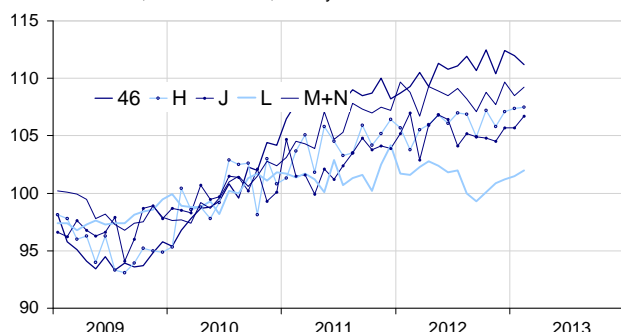
In February 2013, the turnover declined in the *wholesale trade, except for motor vehicles and motorcycles* (−0.7%). On the contrary, it rose in *information and communication* (+0.9%), in *business support activities* (+0.6%) and in *real estate activities* (+0.5%). It was broadly steady in *transportation and storage* (+0.1%).

Over the quarter (q-o-q), the turnover increased in *real estate activities* (+1.5%), in *transportation and storage* (+1.3%), in *business support activities* (+1.2%), in *information and communication* (+1.2%) and in the *wholesale trade, except for motor vehicles and motorcycles* (+0.6%).

Year-on-year (y-o-y), the turnover improved in the *wholesale trade, except for motor vehicles and motorcycles* (+2.9%), in *transportation and storage* (+1.9%) and, to a lesser extent, in *information and communication* (+0.6%) and in *business support activities* (+0.5%). Conversely, it fell off in *real estate activities* (−0.9%).

Wholesale trade and business services

Turnover indices, SA-WDA value, Base year 2010



Source : INSEE

Revisions

The evolution in January has been revised by −0.2 point in *transportation and storage*. The variation, announced at +0.5% last month, has been corrected at +0.3%. The turnover's variation has been confirmed in the *wholesale trade, except for motor vehicles and motorcycles*, in *information and communication*, in *real estate activities* and in *business support activities*.

Variation of the turnover in the wholesale trade and business services

SA-WDA value, Base year 2010

Nace classification	Weight	Change in %			
		Feb./Jan.	Jan./Dec.	q-o-q (1)	y-o-y (2)
46 Wholesale trade, except for motor vehicles and motorcycles	1000	−0.7	−0.4	0.6	2.9
H Transportation and storage	1000	0.1	0.3	1.3	1.9
J Information and communication	1000	0.9	0.0	1.2	0.6
L Real estate activities	1000	0.5	0.3	1.5	−0.9
M+N Business support activities	1000	0.6	−1.1	1.2	0.5
<i>M Professional, scientific and technical activities</i>	579	1.2	−0.2	0.7	0.4
<i>N Administrative and support service activities</i>	421	−0.2	−2.2	1.8	0.6

(1) Quarter-on-quarter: last three months / three previous months.

(2) Year-on-year: last three months / three same months of the previous year.

Source: INSEE