

# Informations *Rapides*

29 avril 2013 - n° 103



## ■ Turnover in the retail trade and personal services - February 2013

### In February 2013, the volume of sales upturned in the trade and repair of motor vehicles and motorcycles, in household services and in accommodation and food service activities

Every index in this issue is in volume, seasonally and working-day adjusted (SA-WDA).

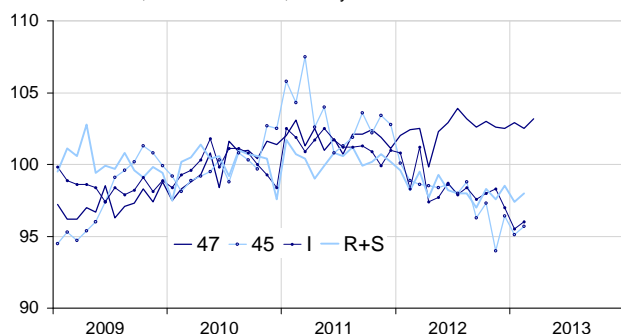
In February 2013, the volume of sales rose compared to January in the *trade and repair of motor vehicles and motorcycles* (+0.6%), in *household services* (+0.6%) and in *accommodation and food service activities* (+0.5%). On the contrary, it downturned in the *retail trade, except for motor vehicles and motorcycles* (−0.4%).

Over the last quarter (q-o-q), the volume of sales fell in *accommodation and food service activities* (−1.8%). It was broadly stable in the *retail trade, except for motor vehicles and motorcycles* (−0.1%) and in the *trade and repair of motor vehicles and motorcycles* (−0.1%) whereas it improved moderately in *household services* (+0.3%).

Year-on-year (y-o-y), the volume of sales went down in the *trade and repair of motor vehicles and motorcycles* (−4.8%). It also declined in *accommodation and food services activities* (−3.9%) and in *household services* (−1.4%). On the contrary, it grew slightly in the *retail trade, except for motor vehicles and motorcycles* (+0.8%).

#### Volume of sales in the retail trade and personal services

Turnover indices, SA-WDA volume, Base year 2010



Please note that the «retail trade, except for motor vehicles and motorcycles» chart (47) includes the early estimate for March 2013.

Source : INSEE

In March 2013, the volume of sales in the retail trade is expected to increase (+1.0 %).

#### Revisions

The evolution in January has been revised by +0.3 point in the *trade and repair of motor vehicles and motorcycles*. The variation, announced at −1.6% last month, has been corrected at −1.3%.

#### Variation of the volume of sales in the retail trade and personal services

SA-WDA volume, Base year 2010

NACE Classification	Weight	Change in %			
		Feb./ Jan.	Jan./ Dec.	q-o-q (1)	y-o-y (2)
<b>47 Retail trade, except for motor vehicles and motorcycles</b>	<b>1000</b>	<b>−0.4</b>	<b>0.4</b>	<b>−0.1</b>	<b>0.8</b>
471 Retail sale in non-specialized stores	369	−0.2	0.2	−1.3	−0.7
472 to 477 Retail sale in specialized stores	573	−0.5	0.6	0.7	1.8
478 and 479 Retail trade not in stores	58	−0.3	0.5	0.2	−0.3
<b>45 Trade and repair of motor vehicles and motorcycles</b>	<b>1000</b>	<b>0.6</b>	<b>−1.3</b>	<b>−0.1</b>	<b>−4.8</b>
<b>I Accommodation and food service activities</b>	<b>1000</b>	<b>0.5</b>	<b>−1.5</b>	<b>−1.8</b>	<b>−3.9</b>
<b>R+S Household services</b>	<b>1000</b>	<b>0.6</b>	<b>−1.1</b>	<b>0.3</b>	<b>−1.4</b>
R Arts, entertainment and recreation	449	−0.8	−2.5	−0.2	−2.0
S Other service activities	551	1.7	−0.1	0.8	−0.8

(1) Quarter-on-quarter: last three months / three previous months.

(2) Year-on-year: last three months / three same months of the previous year.

Source: INSEE

#### Variation of the volume of sales in the retail trade : early estimate\*

SA-WDA volume, Base year 2010

	Change in %	
	March 2013/ Feb. 2013	March 2013/ March 2012
<b>47 Retail trade, except for motor vehicles and motorcycles</b>	<b>1.0</b>	<b>0.9</b>

\* Econometric estimate from a set of sources available within 30 days after the end of the reference month

Source: INSEE