

Informations Rapides



28 novembre 2012 - n° 291 **CONJONCTURE**

■ Turnover in the wholesale trade and business services - September 2012

In September 2012, the turnover decreased in transportation and storage and in the wholesale trade

Every index in this issue is in value, seasonally and working-day adjusted.

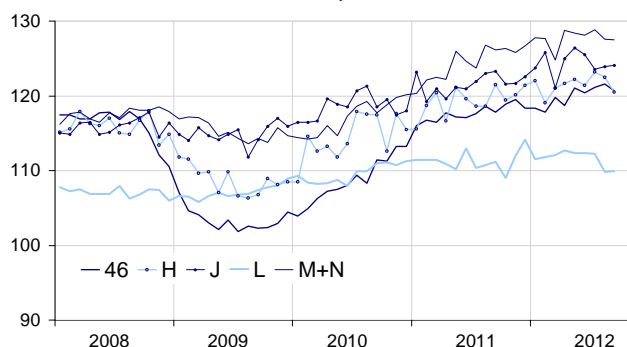
In September 2012, the turnover went down compared to August in *transportation and storage* (−1.6%) and in the *wholesale trade* (−0.7%). On the contrary, it rose slightly in *information and communication* (+0.2%). It was broadly stable in *real estate activities* (+0.1%) and in *business support activities* (−0.1%).

Over the third quarter (q-o-q), the turnover rose by +0.9% in the *wholesale trade*. It was broadly stable in *transportation and storage* (+0.2%). Conversely, it declined by −1.6% in *real estate activities*, by −1.4% in *information and communication* and, to a lesser extent, by −0.3% in *business support activities*.

Year-on-year, the turnover went up by +2.7% in the *wholesale trade*, by +2.1% in *transportation and storage*, by +1.9% in *business support activities* and by +0.9% in *information and communication*. It was broadly stable in *real estate activities* (−0.1%).

Turnover in the wholesale trade and business services

Turnover indices, SA-WDA value, Base year 2005



Source : INSEE

Revisions

The SA-WDA evolution in August has been revised by +0.5 point in *real estate activities*. The variation,

announced at −2.6% last month, has been corrected at −2.1%. In the same period, the SA-WDA evolution has been revised by −0.3 point in *transportation and storage*, by −0.2 point in *business support activities* and in the *wholesale trade* and by −0.1 point in *information and communication*.

Variation of the turnover in the wholesale trade and business services

SA-WDA value, Base year 2005

Classification NAF rev. 2	Weight	Change in %			
		Sept./ Aug.	Aug./ July	q-o-q (1)	y-o-y (2)
46 Wholesale trade, except for motor vehicles and motorcycles	1000	−0.7	0.4	0.9	2.7
461 Wholesale on a fee or contract basis	166	0.0	0.7	1.7	6.4
462 Wholesale of agricultural raw materials and live animals	62	−0.9	5.4	5.7	4.7
463 Wholesale of food, beverages and tobacco	183	−2.4	1.6	−0.1	2.4
464 Wholesale of household goods	173	−1.7	−0.3	−0.7	−0.7
465 and 466 Wholesale of professional equipment goods	215	0.7	−1.5	−0.1	2.6
467 Other specialised wholesale	193	−0.4	−0.5	1.8	1.6
H Transportation and storage	1000	−1.6	−0.6	0.2	2.1
J Information and communication	1000	0.2	0.3	−1.4	0.9
L Real estate activities	1000	0.1	−2.1	−1.6	−0.1
M+N Business support activities	1000	−0.1	−0.9	−0.3	1.9
M Professional, scientific and technical activities	626	0.8	−1.1	−0.3	2.9
N Administrative and support service activities	374	−1.9	−0.5	−0.5	0.3

(1) Quarter-on-quarter: last three months / three previous months.

(2) Year-on-year: last three months / three same months of the previous year.

The codes correspond to different levels of aggregation of the classification NAF rev. 2.

Source: INSEE