

Informations *Rapides*



30 octobre 2012 - n° 269 **CONJONCTURE**

■ Turnover in the wholesale trade and business services - August 2012

In August 2012, the turnover declined in real estate activities and in business support activities

Every index in this issue is in value, seasonally and working-day adjusted.

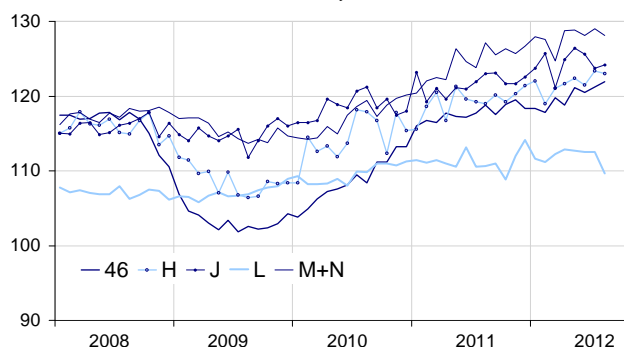
In August 2012, the turnover went down sharply compared with July in *real estate activities* (−2.6%). It also fell in *business support activities* (−0.7%) and in *transportation and storage* (−0.3%). On the contrary, the turnover improved in the *wholesale trade* (+0.6%) and in *information and communication* (+0.4%)

Quarter on quarter (q-o-q), the turnover rose by +1.1% in the *wholesale trade*, by +0.8% in *business support activities*, by +0.8% in *transportation and storage* and by +0.3% in *information and communication*. On the other hand, it fell off by −0.9% in *real estate activities*.

Year on year (y-o-y), the turnover took off by +2.8% in the *wholesale trade*, by +2.8% in *transportation and storage*, by +2.6% in *business support activities* and by +2.1% in *information and communication*. It was broadly stable in *real estate activities* (+0.1%).

Turnover in the wholesale trade and business services

Turnover indices, SA-WDA value, Base year 2005



Source : INSEE

Revisions

The SA-WDA evolution in July has been revised by +0.4 point in *transportation and storage*.

The variation, announced at +1.2% last month, has been corrected at +1.6%. In the same period, the SA-WDA evolution has been revised by −0.3 point in *information and communication*, by −0.2 point in *business support activities* and by +0.1 point in the *wholesale trade* and in *real estate activities*.

Variation of the turnover in the wholesale trade and business services

SA-WDA value, Base year 2005

Classification NAF rev. 2	Weight	Change in %			
		Aug./ July	July/ June	q-o-q (1)	y-o-y (2)
46 Wholesale trade, except for motor vehicles and motorcycles	1000	0.6	0.6	1.1	2.8
461 Wholesale on a fee or contract basis	166	0.8	1.7	1.8	6.0
462 Wholesale of agricultural raw materials and live animals	62	4.7	4.5	0.1	0.4
463 Wholesale of food, beverages and tobacco	183	1.8	−0.2	0.6	2.7
464 Wholesale of household goods	173	0.0	−0.3	0.9	0.7
465 and 466 Wholesale of professional equipment goods	215	−0.8	−1.8	1.9	4.6
467 Other specialised wholesale	193	−0.6	2.1	0.7	1.3
H Transportation and storage	1000	−0.3	1.6	0.8	2.8
J Information and communication	1000	0.4	−1.5	0.3	2.1
L Real estate activities	1000	−2.6	0.0	−0.9	0.1
M+N Business support activities	1000	−0.7	0.7	0.8	2.6
M Professional, scientific and technical activities	626	−1.1	0.2	0.5	3.0
N Administrative and support service activities	374	−0.1	1.8	1.3	1.7

(1) Quarter-on-quarter: last three months / three previous months.

(2) Year-on-year: last three months / three same months of the previous year.

The codes correspond to different levels of aggregation of the classification NAF rev. 2.

Source: INSEE