

# Informations Rapides



10 juillet 2012 - n° 173 **CONJONCTURE**

## Main indicators

### ■ Industrial Production Indices – May 2012

## In May 2012, manufacturing output decreased (-1.0%)

In May 2012, **manufacturing output** decreased in volume (-1.0%). It had decreased as well in April (-0.9%).

Output decreased more sharply in **total industry** (-1.9%).

### During the last quarter, manufacturing output slightly decreased (-0.2%)...

During the last quarter (quarter-on-quarter change), output slightly decreased in the manufacturing sector (-0.2%) and was almost stable in the industry as a whole (-0.1%).

Output decreased in the *manufacture of electrical and electronic equipment* (-1.2%), in the *manufacture of transport equipment* (-1.0%). It slightly increased in the *“other manufacturing”* (+0.3%).

Again, the *manufacture of coke and refined petroleum products* suffered of closing for maintenance (-7.7%).

### ...and was lower than its last year's level by 2.2%

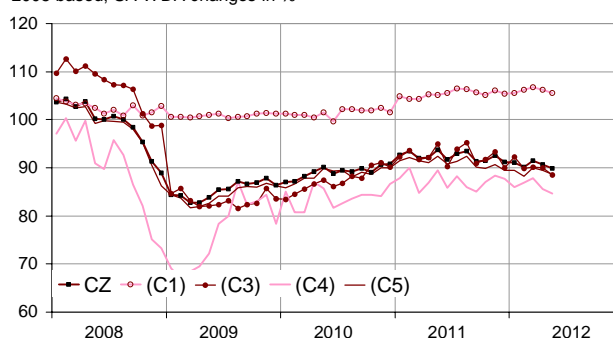
Manufacturing output decreased by 2.2% (y-o-y).

It decreased in the *“other manufacturing”* (-2.5%), in the *manufacture of electrical and electronic equipment and machine equipment* (-3.7%) and in the *manufacture of transport equipment* (-1.2%). Output strongly decreased in the *manufacture of coke and refined petroleum products* (-16.3%).

Please note: all the series are adjusted for seasonal variations (SA) and the number of working days (WDA).

### Monthly industrial Production indexes

2005 based, SA-WDA changes in %



Legend : CZ : Manufacturing - (C1) : Manufacture of food products and beverages - (C3) : Electrical and electronic equipment; machine equipment - (C4) : Manufacture of transport equipment - (C5) : Other manufacturing

Sources : Insee, SSP, SOeS

### Variation of the Industrial Production

2005 based, SA-WDA changes in %

	May / April	April / March	Quarter on quarter change	Year on year change (1)
<b>NA : A10, (A17)</b>				
<b>BE: INDUSTRY</b>	-1,9	1,4	-0,1	-1,3
<b>CZ: MANUFACTURING</b>	-1,0	-0,9	-0,2	-2,2
(C1): Manufacture of food products and beverages	-0,6	-0,6	0,4	1,2
(C2): Manufacture of coke and refined petroleum products	-4,3	-1,8	-7,7	-16,3
(C3): Electrical and electronic equipment; machine equipment	-1,7	-0,2	-1,2	-3,7
(C4): Manufacture of transport equipment	-1,2	-2,5	-1,0	-1,2
(C5): Other manufacturing	-1,0	-0,6	0,3	-2,5
<b>(DE): Mining and quarrying; energy; water supply; waste management</b>	-7,3	16,8	0,1	4,5
<b>FZ: Construction</b>	0,4	-0,8	3,2	-1,1

(1) Last three months / three same months of previous year  
The codes correspond to the level of aggregation A 10 (A 17) of the "NA" aggregate classification based on NAF rev.2.

Sources : INSEE, SSP, SOeS

## Variation of the Industrial Production

2005 based, SA-WDA changes in %

NA : A10, (A17), [A38 ou A64]	May 2012	May / April	April / March	Quarter on quarter change
<b>BE: INDUSTRY</b>	<b>90,8</b>	<b>-1,9</b>	<b>1,4</b>	<b>-0,1</b>
<b>CZ: MANUFACTURING</b>	<b>89,8</b>	<b>-1,0</b>	<b>-0,9</b>	<b>-0,2</b>
<b>(C1): Man. of food products and beverages</b>	<b>105,6</b>	<b>-0,6</b>	<b>-0,6</b>	<b>0,4</b>
<b>(C2): Man. of coke and refined petroleum products</b>	<b>62,0</b>	<b>-4,3</b>	<b>-1,8</b>	<b>-7,7</b>
<b>(C3): Electrical and electronic equipment; machine equipment</b>	<b>88,5</b>	<b>-1,7</b>	<b>-0,2</b>	<b>-1,2</b>
[CI] Man. of computer, electronic and optical products	91,4	-2,7	0,0	-0,4
[CJ] Man. of electrical equipment	97,8	-1,1	0,3	-2,0
[CK] Man. of machinery and equipment n.e.c. (1)	81,1	-1,1	-0,8	-1,4
<b>(C4): Man. of transport equipment</b>	<b>84,6</b>	<b>-1,2</b>	<b>-2,5</b>	<b>-1,0</b>
[CL1] Man. of motor vehicles, trailers and semi-trailers	66,5	-0,7	-0,1	-2,4
[CL2] Man. of other transport equipment	121,5	-1,7	-4,9	0,6
<b>(C5): Other manufacturing</b>	<b>88,6</b>	<b>-1,0</b>	<b>-0,6</b>	<b>0,3</b>
[CB] Man. of textiles, wearing apparel, leather and related products	58,0	-0,7	0,7	0,5
[CC] Man. of wood and paper products; printing and reproduction of recorded media	74,6	-1,5	-1,3	0,3
[CE] Man. of chemicals and chemical products	114,1	-0,3	0,6	1,8
[CF] Man. of basic pharmaceutical products and pharmaceutical preparations	109,6	-0,5	-0,6	-1,2
[CG] Man. of rubber and plastics products, and other non-metallic mineral products	83,6	-1,2	-1,4	-0,1
[CH] Man. of basic metals and fabricated metal products, except machinery and equipment	78,5	-1,1	-1,0	-0,7
[CM] Other manufacturing; repair and installation of machinery and equipment	104,9	-1,1	0,3	2,5
<b>(DE): Mining and quarrying; energy; water supply; waste management</b>	<b>97,5</b>	<b>-7,3</b>	<b>16,8</b>	<b>0,1</b>
[BZ] Mining and quarrying	85,1	-2,1	0,8	4,4
[DZ] Electricity, gas, steam and air-conditioning supply	97,4	-8,7	20,8	-0,5
[EZ] Water supply; sewerage, waste management and remediation	107,6	1,0	-2,8	1,7
<b>FZ: Construction</b>	<b>95,1</b>	<b>0,4</b>	<b>-0,8</b>	<b>3,2</b>
<b>MIGs (2)</b>				
Capital goods	89,1	-1,5	-1,1	0,1
Intermediate goods	84,9	-0,7	-0,7	0,0
Consumer durables	82,0	-0,5	0,4	-0,7
Consumer non-durables	101,7	-0,8	-0,7	-0,2

(1) n.e.c. : not elsewhere classifiable

(2) Main industrial groupings : definition in Commission regulation EC of 14 June 2007

Sources : Insee, SSP, SOeS

## Output decreased in the « other manufacturing » (-1.0%)...

Output decreased in the *manufacture of basic metals and fabricated metal products* (-1.1%), in the *manufacture of rubber and plastics products* (-1.2%), in the *other manufacturing, repair and installation of machinery and equipment* (-1.1%) as well as in the *manufacture of wood and paper products; printing and reproduction of record media* (-1.5%).

## ... in the manufacture of electrical and electronic equipment, machine equipment (-1.7%) ...

Output decreased in the *manufacture of computer, electronic and optical products* (-2.7%), in the *manufacture of machinery and equipment n.e.c.* (-1.1%) and in the *manufacture of electrical equipment* (-1.1%).

## ... as well as in the manufacture of transport equipment (-1.2%)

Output decreased in the *manufacture of other transport equipment* (-1.7%) and in the *manufacture of motor vehicles, trailers and semi-trailers* (-0.7%).

## Output dropped in mining and quarrying, energy, water supply, waste management

Output dropped by 8.7% in the *electricity, gas, steam and air-conditioning supply*.

## • Revisions: -0.22 in April

### Measure of variations' revisions

(in point %)

	April / March	March / Feb.	Feb. / Jan.	Q1 2012 / Q4 2011	2011 / 2010
<b>Industry (BE)</b>	<b>-0,10</b>	<b>-0,11</b>	<b>0,00</b>	<b>-0,15</b>	<b>-0,06</b>
raw serie	0,09	0,01	-0,21	0,07	-0,06
SA-WDA coefficient	-0,19	-0,12	0,21	-0,22	0,00
<b>Manufacturing (CZ)</b>	<b>-0,22</b>	<b>0,00</b>	<b>-0,11</b>	<b>-0,15</b>	<b>-0,09</b>
raw serie	0,08	-0,10	-0,23	0,07	-0,10
SA-WDA coefficient	-0,30	0,10	0,12	-0,22	0,01

Note of reading : in the manufacturing, the SA-WDA evolution between March and April is revised by -0.22 point : 0.08 is due to the raw serie's revision and -0.30 to the new calculation of the SA-WDA.

Sources : Insee, SSP, SOeS

## Learn more:

- Complementary data (long series) and metadata (methodology, linked internet pages...) are available on the HTML page of this index: <http://www.insee.fr/en/themes/info-rapide.asp?id=10>
- Historical data are available on the BDM: [G950](#), [G951](#), [G952](#), [G953](#), [G963](#).
- Press contact: [bureau-de-presse@insee.fr](mailto:bureau-de-presse@insee.fr)

Next issue: August 10 2012, 8:45 AM