

Informations Rapides



1 août 2012 - n° 196 CONJONCTURE

■ Turnover in the retail trade and personal services - May 2012

In May 2012, the turnover bounced in the retail trade and in the household services

Every index in this issue is in volume, seasonally and working-day adjusted.

In May 2012, the turnover bounced in the *retail trade*, except of *motor vehicles and motorcycles* (+2.1 %) and in the *household services* (+1.6 %). It slightly rose in *accommodation and food service activities* (+0.2 %) and was broadly steady in the *trade and repair of motor vehicles and motorcycles* (–0.1 %).

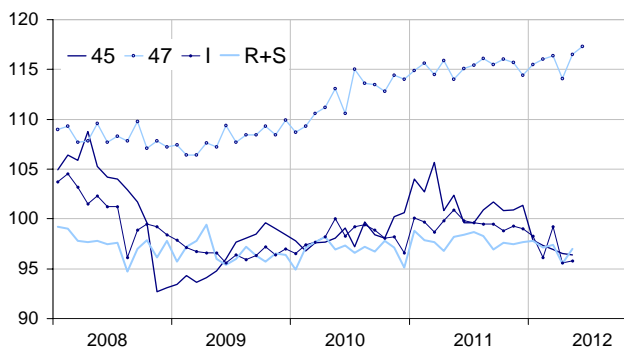
Quarter on quarter (q-o-q), the turnover declined in the *trade and repair of motor vehicles and motorcycles* (–2.3 %), in *accommodation and food service activities* (–1.0 %) and in the *household services* (–0.9 %). On the contrary, it slightly grew in the *retail trade* (+0.3 %).

Year on year (y-o-y), the turnover was down in the *trade and repair of motor vehicles and motorcycles* (–6.2 %). It declined in *accommodation and food services activities* (–2.9 %) and in the *household services* (–1.0 %). Conversely, it increased in the *retail trade* (+0.8 %).

According to our estimate, the turnover in the *retail trade* is expected to rise in June 2012 (+0.6 %).

Retail trade and personal services

Turnover indices, volume SA-WDA, Base year 2005



Please note that the « retail trade... » chart (47) includes the early estimate for June 2012.

Source : INSEE

Revisions

The SA-WDA evolution in April has been revised by –0.4 point in *accommodation and food service activities*. The variation, initially announced at –3.2 %, has been corrected at –3.6 %. The correction is due to the coefficients SA-WDA's updating in the sector of *restaurants and mobile food service activities*. In the same period, the SA-WDA evolution has been revised by –0.2 point in the *household services* and by +0.1 point in the *retail trade*, except of *motor vehicles and motorcycles*.

Monthly turnover indices

SA-WDA volume, Base year 2005

Classification NAF rev. 2	Weight	Change in %			
		May/ April	April/ March	q-o-q (1)	y-o-y (2)
45 Trade and repair of motor vehicles and motorcycles	1000	–0.1	–0.4	–2.3	–6.2
47 Retail trade, except of motor vehicles and motorcycles	1000	2.1	–2.0	0.3	0.8
471 Retail sale in non-specialized stores	415	0.5	–0.6	0.2	–1.6
472 to 477 Retail sale in specialized stores	545	3.0	–2.7	0.5	2.2
478 and 479 Retail trade not in stores	40	2.1	–1.2	–1.1	1.2
I Accommodation and food service activities	1000	0.2	–3.6	–1.0	–2.9
R+S Household services	1000	1.6	–2.0	–0.9	–1.0
R Arts, entertainment and recreation	472	1.5	0.4	–2.1	–1.6
S Other service activities	528	1.5	–4.0	0.2	–0.4

(1) Quarter-on-quarter: last three months / three previous months.

(2) Year-on-year: last three months / three same months of the previous year.

The codes correspond to different levels of aggregation of the classification NAF rev.2.

Source: INSEE

Turnover indices: early estimate*

SA-WDA volume, Base year 2005

	Change in %	
	June 2012/ May 2012	June 2012/ June 2011
47 Retail trade...	0.6	1.9

* Econometric estimate from a set of sources available within 30 days after the end of the reference month

Source: INSEE