

Informations *Rapides*

28 février 2014 - n° 53



■ Turnover in the wholesale trade and business services - December 2013

In December 2013, the turnover increased in the wholesale trade and business services (excluding real estate activities)

Every index in this issue is in value, seasonally and working-day adjusted (SA-WDA).

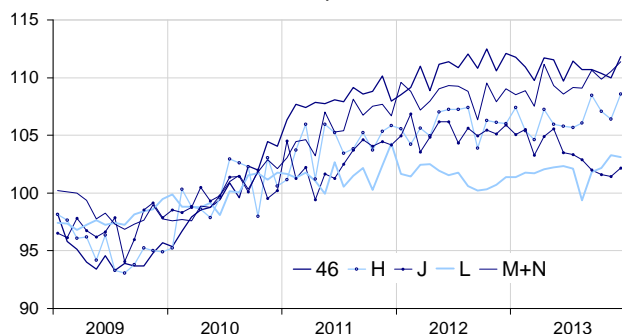
In December 2013, the turnover increased in *transportation and storage* (+2.1%) and in *wholesale trade, except for motor vehicles and motorcycles* (+1.7%). It also increased in *information and communication* (+0.7%) and in *business support activities* (+0.7%). On the opposite, it declined very slightly in *real estate activities* (−0.2%).

Over the last three months (q-o-q), the turnover increased in *business support activities* (+0.9%), in *real estate activities* (+1.7%) and in *transportation and storage* (+0.6%). On the other hand, it went down in *information and communication* (−1.0%) and, to a lesser extent, in the *wholesale trade, except for motor vehicles and motorcycle* (−0.2%).

Over the year (y-o-y), the turnover plunged in *information and communication* (−3.6%) and slid in the *wholesale trade, except for motor vehicles and motorcycles* (−0.9%). On the contrary, it climbed in *business support activities* (+1.6%), in *real estate activities* (+2.0%) and in *transportation and storage* (+1.1%).

Wholesale trade and business services

Turnover indices, SA-WDA value, Base year 2010



Source : INSEE

Revisions

The change in November has been reviewed by +0.5 point in *transportation and storage*, by −0.2 point in *information and communication*, by +0.2 point in the *wholesale trade, except for motor vehicles and motorcycles* and by +0.1 point in *real estate activities*. It remained unchanged in *business support activities*.

Variation of the turnover in the wholesale trade and business services

SA-WDA value, Base year 2010

Nace classification	Weight	Change in %			
		Dec./ Nov.	Nov./ Oct.	q-o-q (1)	y-o-y (2)
46 Wholesale trade, except for motor vehicles and motorcycles	1000	1.7	−0.3	−0.2	−0.9
H Transportation and storage	1000	2.1	−0.6	0.6	1.1
J Information and communication	1000	0.7	−0.2	−1.0	−3.6
L Real estate activities	1000	−0.2	1.1	1.7	2.0
M+N Business support activities	1000	0.7	0.6	0.9	1.6
M Professional, scientific and technical activities	579	0.3	1.0	1.7	3.0
N Administrative and support service activities	421	1.4	0.1	−0.2	−0.2

(1) Quarter-on-quarter: last three months / three previous months.

(2) Year-on-year: last three months / three same months of the previous year.

Source: INSEE