

## ■ Turnover in the wholesale trade and business services - February 2014

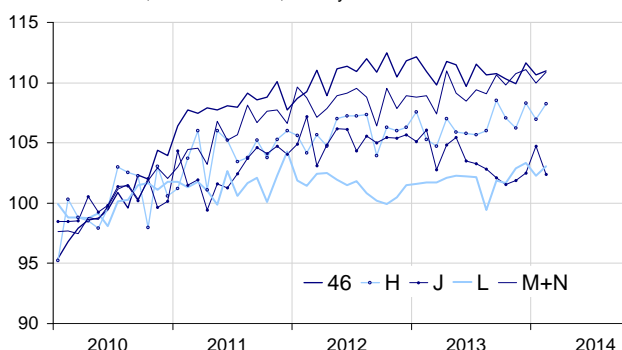
### In February 2014, the turnover improved in the wholesale trade and in business services, except in information and communication

Every index in this issue is in value, seasonally and working day adjusted.  
The commentary shows evolutions of subsections by decreasing contributions. The contribution of a subsection depends on the extent of the evolution and on its weight.

In February 2014, the turnover improved in *transportation and storage* (+1.2%), in *real estate activities* (+0.8%) and in *business support activities* (+0.8%). It increased slightly in the *wholesale trade, except for motor vehicles and motorcycles* (+0.0%). On the opposite, it decreased strongly in *information and communication* (−2.2%).

#### Wholesale trade and business services

Turnover indices, SA-WDA value, Base year 2010



Source : INSEE

#### Improvement in the wholesale trade, except for motor vehicles and motorcycles

In February, the turnover grew slightly in the *wholesale trade, except for motor vehicles and motorcycles* (+0.3%) after a decline in January (−0.9%). It went up in the *wholesale of household goods* (+2.1%), the *wholesale of other machinery, equipment and supplies* (+1.7%) and in the *wholesale of agricultural raw materials and live animals* (+1.1%).

On the other hand, it fell in the *wholesale of information and communication equipment* (−3.0%), in the *wholesale on a fee or contract basis* (−0.9%) as well as in *non specialised wholesale trade* (−0.6%). The turnover of the *wholesale trade* improved over the

last three months (+0.7%, q-o-q), but decreased over the year (−0.5%, y-o-y).

#### Rebond in transportation and storage

In February, the turnover of *transportation and storage* rebounded (+1.2%) after a drop in January of a similar level (−1.2%). It soared in *land transport and transport via pipelines* (+3.0%) and in *water transport* (+2.7%) and to a lesser extent in *postal and courier activities* (+0.6%). By contrast, it declined in *warehousing and support activities for transportation* (−0.7%) and in *air transport* (−0.6%).

The turnover of *transportation and storage* improved over the last three months (+0.5%, q-o-q), and over the year (+1.4%, y-o-y).

#### Rise in real estate activities

The turnover of *real estate activities* rose in February (+0.8%) after a decrease in January (−1.0%). It went up by 0.7% over the last three months, as well as over the year (+1.3%).

#### Variation of the turnover in the wholesale trade and business services

SA-WDA value, Base year 2010

Nace classification	Weight	Change in %			
		Feb./Jan.	Jan./Dec.	q-o-q (1)	y-o-y (2)
<b>46 Wholesale trade, except for motor vehicles and motorcycles</b>	<b>1000</b>	<b>0.3</b>	<b>−0.9</b>	<b>0.7</b>	<b>−0.5</b>
<b>H Transportation and storage</b>	<b>1000</b>	<b>1.2</b>	<b>−1.2</b>	<b>0.5</b>	<b>1.4</b>
<b>J Information and communication</b>	<b>1000</b>	<b>−2.2</b>	<b>2.1</b>	<b>1.3</b>	<b>−2.3</b>
<b>L Real estate activities</b>	<b>1000</b>	<b>0.8</b>	<b>−1.0</b>	<b>0.7</b>	<b>1.3</b>
<b>M+N Business support activities</b>	<b>1000</b>	<b>0.8</b>	<b>−1.0</b>	<b>0.2</b>	<b>1.6</b>
M Professional, scientific and technical activities	579	1.5	−2.0	−0.6	1.6
N Administrative and support service activities	421	−0.2	0.3	1.3	1.6

(1) Quarter-on-quarter: last three months / three previous months

(2) Year-on-year : last three months / three same months of previous year

The codes correspond to different levels of aggregation of the NACE classification.

Source : INSEE

## Decrease in information and communication

In February, the turnover plunged in *information and communication* (−2.2% after +2.1% in January) after three consecutive months of gains. It slumped in *telecommunications* (−5.3%) and in *publishing activities* (−2.3%). Conversely, it grew in *programming and broadcasting activities* (+1.5%). It was stable in *computer programming, consultancy and related activities* (−0.1%), in *motion picture, video and television programme production* (+0.1%) as well as in *information service activities* (+0.1%).

The turnover of *information and communication* rose over the last three months (+1.3%, q-o-q), but decreased over the year (−2.3%, y-o-y).

## Rebound in business support activities

In February, the turnover recovered in *business support activities* (+0.8%), after a drop in December (−1.0%). The turnover rose in the *professional, scientific and technical activities* (+1.5%), in particular in *legal and accounting activities* (+5.4%), in *architectural and engineering activities...* (+1.3%), in *activities of head offices...* (+0.5%) as well as in *scientific research and development* (+2.5%). On the other hand, the turnover in *administrative and support service activities* slid very slightly (−0.2%): it declined in *employment activities* (−1.7%) and in *services to buildings and landscape activities* (−1.2%) but went up in *office administrative, office support and other business support activities* (+0.8%).

The turnover increased slightly over the last three months (+0.2%, q-o-q) and, to a greater extent over the year (1.6%, y-o-y).

### • Revisions

The change in January has been revised by −0.9 point point in *information and communication*. Announced at +3.0%, the turnover was revised at +2.1%. It has been revised by −0.5 point in *transportation and storage*, by −0.3 point in the *wholesale trade, except for motor vehicles and motorcycles* and by −0.2 point in *business support activities*. It remained unchanged in *real estate activities*.

## Variation of the turnover in the wholesale trade and business services

SA-WDA value, Base year 2010

Nace Classification	Weight	Feb. 2014	Variation en %		
			Feb./ Jan.	Jan./ Dec.	q-o-q (1)
<b>46 Wholesale trade, except for motor vehicles and motorcycles</b>	<b>1000</b>	<b>111.0</b>	<b>0.3</b>	<b>−0.9</b>	<b>0.7</b>
461 Wholesale on a fee or contract basis	152	116.3	−0.9	−2.2	0.9
462 Wholesale of agricultural raw materials and live animals	54	127.1	1.1	−0.2	5.2
463 Wholesale of food, beverages and tobacco	170	111.6	−0.1	−1.2	0.4
464 Wholesale of household goods	207	107.0	2.1	−1.6	1.3
465 Wholesale of information and communication equipment	61	102.9	−3.0	3.5	3.9
466 Wholesale of other machinery, equipment and supplies	125	114.8	1.7	−0.7	0.4
467 Other specialised wholesale	197	106.5	−0.1	−1.2	−2.0
469 Non specialised wholesale trade	34	110.1	−0.6	4.2	1.0
<b>H Transportation and storage</b>	<b>1000</b>	<b>108.2</b>	<b>1.2</b>	<b>−1.2</b>	<b>0.5</b>
49 Land transport and transport via pipelines	407	110.9	3.0	−2.1	0.3
50 Water transport	73	113.8	2.7	−1.0	0.8
51 Air transport	91	105.3	−0.6	−1.9	1.2
52 Warehousing and support activities for transportation	360	106.3	−0.7	−0.2	0.5
53 Postal and courier activities	69	100.8	0.6	−0.1	0.7
<b>J Information and communication</b>	<b>1000</b>	<b>102.4</b>	<b>−2.2</b>	<b>2.1</b>	<b>1.3</b>
58 Publishing activities	158	102.4	−2.3	3.6	−0.3
59 Motion picture, video and television programme production...	76	103.9	0.1	−0.5	3.7
60 Programming and broadcasting activities	61	104.6	1.5	−1.0	−1.2
61 Telecommunications	396	92.4	−5.3	4.3	2.6
62 Computer programming, consultancy and related activities	251	115.3	−0.1	0.4	1.6
63 Information service activities	58	110.3	0.1	0.3	−2.7
<b>L Real estate activities</b>	<b>1000</b>	<b>103.1</b>	<b>0.8</b>	<b>−1.0</b>	<b>0.7</b>
681 Buying and selling of own real estate	96	92.0	0.9	3.3	5.9
682 Renting and operating of own or leased real estate	691	104.7	0.5	0.4	0.0
683 Real estate activities on a fee or contract basis	213	102.8	1.4	−6.9	1.1
<b>M+N Business support activities</b>	<b>1000</b>	<b>110.9</b>	<b>0.8</b>	<b>−1.0</b>	<b>0.2</b>
<b>M Professional, scientific and technical activities</b>	<b>579</b>	<b>110.8</b>	<b>1.5</b>	<b>−2.0</b>	<b>−0.6</b>
69 Legal and accounting activities	90	110.1	5.4	−3.1	−0.2
70 Activities of head offices...	219	115.6	0.5	−1.8	0.6
71 Architectural and engineering activities...	151	109.1	1.3	−1.6	−3.0
72 Scientific research and development	26	104.1	2.5	−2.0	−1.7
73 Advertising and market research	68	101.4	−0.1	−1.2	0.6
74 Other professional, scientific and technical activities	19	113.3	2.6	−4.5	0.4
75 Veterinary activities	6	113.3	0.5	0.2	1.3
<b>N Administrative and support service activities</b>	<b>421</b>	<b>111.0</b>	<b>−0.2</b>	<b>0.3</b>	<b>1.3</b>
77 Rental and leasing activities	98	110.1	0.0	0.1	1.0
78 Employment activities	80	108.7	−1.7	1.0	1.8
79 Travel agency, tour operator...	42	105.0	−0.6	2.7	1.3
80 Security and investigation activities	21	113.6	1.5	−0.1	0.2
81 Services to buildings and landscape activities	50	109.5	−1.2	−0.4	0.6
82 Office administrative, office support and other business support activities	131	115.1	0.8	−0.4	1.8

(1) Quarter-on-quarter: last three months / three previous months.

Source: INSEE

### For further information :

- Complementary data (long séries) and metadata (methodology, linked internet pages...) are available on the HTML page of the index : <http://www.insee.fr/fr/themes/info-rapide.asp?id=95>
- Historical data are available on BDM : [G1418](#), [G1421](#), [G1423](#), [G1424](#), [G1426](#).
- Press contact : [bureau-de-presse@insee.fr](mailto:bureau-de-presse@insee.fr)

Next publication : May 28th 2014