

# Informations *Rapides*



10 janvier 2012 - n° CONJONCTURE

## Main indicators

### ■ Industrial Production Indices – November 2011

## In November 2011, manufacturing output increased (+1.3%)

In November 2011, **manufacturing output** increased in volume (+1.3%). It was almost stable in October 2011 (+0.2%).

In **total industry**, output increased as well (+1.1%).

### **In the last three months, manufacturing output decreased (-0.7%)...**

In the last three months (quarter-on-quarter change), output decreased in the manufacturing sector (-0.7%) as well as in the industry as a whole (-1.0%).

Output decreased in the *other manufacturing sectors* (-1.2%) and in the *manufacture of electrical, electronic equipment and machine equipment* (-0.4%). It was stable in the *manufacture of transport equipment* (0.0%). On the contrary, output increased in the *manufacture of coke and refined petroleum products* (+1.3%).

### **...though it remained higher than its last year's level by 2.2%**

Manufacturing output rose by 2.2% (y-o-y).

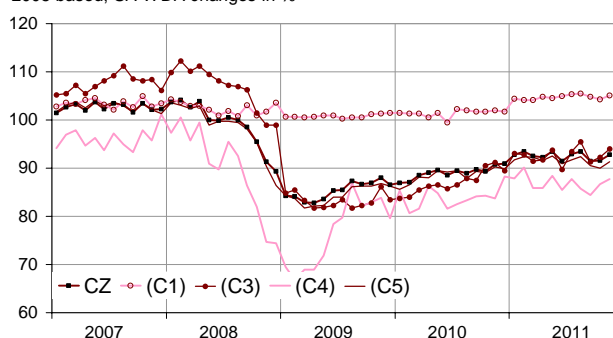
It increased in the *other manufacturing sectors* (+1.2%), in the *manufacture of electrical and electronic equipment and machine equipment* (+3.1%) and in the *manufacture of transport equipment* (+2.7%).

It strongly increased in the *manufacture of coke and refined petroleum products* (+15.3%) due to strikes in October 2010.

*Please note: all the series are adjusted for seasonal variations (SA) and the number of working days (WDA).*

### Monthly industrial Production indexes

2005 based, SA-WDA changes in %



Legend : CZ : Manufacturing - (C1) : Manufacture of food products and beverages - (C3) : Electrical and electronic equipment; machine equipment - (C4) : Manufacture of transport equipment - (C5) : Other manufacturing

Sources : Insee, SSP, SOeS

### Variation of the Industrial Production by activity (NA)

2005 based, SA-WDA changes in %

	Nov. / Oct.	Oct. / Sept.	Quarter on quarter change	Year on year change (1)
<b>NA : A10, (A17)</b>				
<b>BE: INDUSTRY</b>	<b>1,1</b>	<b>0,1</b>	<b>-1,0</b>	<b>1,1</b>
<b>CZ: MANUFACTURING</b>	<b>1,3</b>	<b>0,2</b>	<b>-0,7</b>	<b>2,2</b>
(C1): Manufacture of food products and beverages	0,8	-0,5	-0,5	2,9
(C2): Manufacture of coke and refined petroleum products	2,2	3,1	1,3	15,3
(C3): Electrical and electronic equipment; machine equipment	2,0	1,0	-0,4	3,1
(C4): Manufacture of transport equipment	1,3	2,7	0,0	2,7
(C5): Other manufacturing	1,4	-0,6	-1,2	1,2
<b>(DE): Mining and quarrying; energy; water supply; waste management</b>	<b>-</b>	<b>-</b>	<b>-</b>	<b>-</b>
	<b>0,7</b>	<b>-0,3</b>	<b>-2,4</b>	<b>-5,2</b>
<b>FZ: Construction</b>	<b>0,8</b>	<b>-0,8</b>	<b>-0,1</b>	<b>0,7</b>

(1) Last three months / three same months of previous year  
The codes correspond to the level of aggregation A 10 (A 17) of the "NA" aggregate classification based on NAF rev.2.

Sources : INSEE, SSP, SOeS

## Variation of the Industrial Production

2005 based, SA-WDA changes in %

NA : A10, (A17), [A38 ou A64]	Nov. 2011	Nov. / Oct.	Oct. / Sept.	Quarter on quarter change
<b>BE: INDUSTRY</b>	<b>93,0</b>	<b>1,1</b>	<b>0,1</b>	<b>-1,0</b>
<b>CZ: MANUFACTURING</b>	<b>92,8</b>	<b>1,3</b>	<b>0,2</b>	<b>-0,7</b>
(C1): Man. of food products and beverages	105,1	0,8	-0,5	-0,5
(C2): Man. of coke and refined petroleum products	78,9	2,2	3,1	1,3
(C3): Electrical and electronic equipment; machine equipment	94,0	2,0	1,0	-0,4
[CI] Man. of computer, electronic and optical products	97,6	1,6	3,8	-0,7
[CJ] Man. of electrical equipment	102,5	1,7	0,1	0,5
[CK] Man. of machinery and equipment n.e.c. (1)	86,4	2,4	-0,7	-0,9
(C4): Man. of transport equipment	87,8	1,3	2,7	0,0
[CL1] Man. of motor vehicles, trailers and semi-trailers	70,6	1,9	4,7	-6,1
[CL2] Man. of other transport equipment	123,1	0,7	0,7	8,0
(C5): Other manufacturing	91,3	1,4	-0,6	-1,2
[CB] Man. of textiles, wearing apparel, leather and related products	58,6	1,2	-2,2	-2,9
[CC] Man. of wood and paper products; printing and reproduction of recorded media	77,4	2,7	-3,6	-4,1
[CE] Man. of chemicals and chemical products	109,9	1,7	-2,1	-3,1
[CF] Man. of basic pharmaceutical products and pharmaceutical preparations	111,4	0,1	-0,2	-1,2
[CG] Man. of rubber and plastics products, and other non-metallic mineral products	88,9	1,3	1,0	-1,6
[CH] Man. of basic metals and fabricated metal products, except machinery and equipment	82,0	0,9	-1,2	-1,0
[CM] Other manufacturing; repair and installation of machinery and equipment	108,3	2,2	1,7	2,6
(DE): Mining and quarrying; energy; water supply; waste management	94,4	-0,7	-0,3	-2,4
[BZ] Mining and quarrying	90,1	3,2	0,5	1,5
[DZ] Electricity, gas, steam and air-conditioning supply	93,7	-1,2	-0,4	-3,3
[EZ] Water supply; sewerage, waste management and remediation	103,9	0,1	-0,3	2,8
<b>FZ: Construction</b>	<b>96,1</b>	<b>0,8</b>	<b>-0,8</b>	<b>-0,1</b>
<b>MIGs (2)</b>				
Capital goods	93,5	2,0	2,2	0,4
Intermediate goods	87,5	1,2	-1,1	-1,7
Consumer durables	85,2	4,3	-1,0	-1,1
Consumer non-durables	102,6	0,8	-0,5	-0,7

(1) n.e.c. : not elsewhere classifiable

(2) Main industrial groupings : definition in Commission regulation EC of 14 June 2007

Sources : Insee, SSP, SOeS

**In November 2011, output increased in the « other manufacturing » (+1.4%)...**

Output increased in the *other manufacturing, repair and installation of machinery and equipment* (+2.2%), in the *manufacture of basic metals and fabricated metal products* (+0.9%), in the *manufacture of wood and paper products; printing and reproduction of recorded media* (+2.7%) as well as in the *manufacture of rubber and plastics products* (+1.3%). It also increased in the *manufacture of chemicals and chemical products* (+1.7%) and in the *manufacture of textiles, wearing apparel, leather and related products* (+1.2%) and in the *manufacture of basic pharmaceutical products and pharmaceutical preparations* (+1.2%).

**...in the manufacture of electrical and electronic equipment, machine equipment (+2.0%)...**

Output sharply increased in the *manufacture of machinery and equipment n.e.c.* (+2.4%), in the *manufacture of computer, electronic and optical products* (+1.6%) as well as in the *manufacture of electrical equipment* (+1.7%).

**...as well as in the manufacture of transport equipment (+1.3%)**

Output increased in the *manufacture of motor vehicles, trailers and semi-trailers* (+1.9%) and in the *manufacture of other transport equipment* (+0.7%).

### • Revisions: +0.22 point in October

#### Measure of variations' revisions

(in point %)

	Oct. / Sept.	Sept. / Aug.	Aug. / July	Q3 2011 / Q2 2011	2010 / 2009
<b>Industry (BE)</b>	<b>0,11</b>	<b>-0,10</b>	<b>0,00</b>	<b>0,11</b>	<b>-0,01</b>
raw serie	0,10	0,19	-0,11	-0,04	0,00
SA-WDA coefficient	0,01	-0,29	0,11	0,15	-0,01
<b>Manufacturing (CZ)</b>	<b>0,22</b>	<b>0,00</b>	<b>0,00</b>	<b>0,04</b>	<b>0,03</b>
raw serie	0,00	0,00	0,00	0,00	0,00
SA-WDA coefficient	0,22	0,00	0,00	0,04	0,03

Note of reading : in the manufacturing, the SA-WDA evolution between September and October is revised by 0.22 point : 0.00 is due to the raw serie's revision and 0.22 to the new calculation of the SA-WDA.

Sources : Insee, SSP, SOeS

### Learn more:

- Complementary data (long series) and metadata (methodology, linked internet pages...) are available on the HTML page of this index: <http://www.insee.fr/en/themes/info-rapide.asp?id=10>
- Historical data are available on the BDM: [G950](#), [G951](#), [G952](#), [G953](#), [G963](#).
- Press contact: [bureau-de-presse@insee.fr](mailto:bureau-de-presse@insee.fr)

Next issue: February 10 2012, 8:45 AM