

Informations Rapides

10 avril 2014 - n° 83

Main indicators



■ Industrial Production Indices – February 2014

In February 2014, manufacturing output increased (+0.3%)

In February 2014, **manufacturing output** increased by 0.3%, continuing on the upward trend begun in October 2013. Output was almost stable in **industrial production as a whole** (+0.1%, after –0.3% in January 2014).

During the last three months, manufacturing output improved (+0.8%)...

During the last three months (q-o-q), output improved in the manufacturing sector (+0.8%), and was almost stable in industry as a whole (+0.1%).

Output rose in *other manufacturing* (+1.2%), in the *manufacture of food products and beverages* (+1.6%) and in the *manufacture of coke and refined petroleum products* (+3.4%). On the other hand, output declined in the *manufacture of electrical and electronic equipment; machine equipment* (–0.8%) as well as in the *manufacture of transport equipment* (–0.6%).

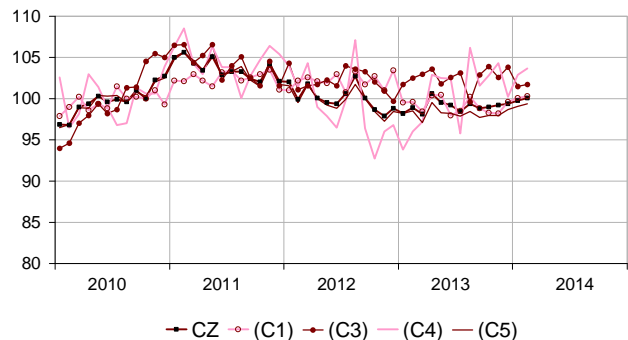
... and was higher than its last year's level by 1.1%.

Manufacturing output went up by 1.1% (y-o-y). Output soared in the *manufacture of transport equipment* (+7.0%) and improved in a less sustained pace in *other manufacturing* (+0.7%) and in the *manufacture of electrical and electronic equipment; machine equipment* (+1.0%). On the opposite, output dropped in the *manufacture of coke and refined petroleum products* (–6.7%) and slipped in the *manufacture of food products and beverages* (–0.8%).

Please note: all the series are adjusted for seasonal variations (SA) and the number of working days (WDA).

Monthly industrial Production indices

2010 based, SA-WDA changes in %



Legend: CZ: Manufacturing - (C1): Manufacture of food products and beverages - (C3): Electrical and electronic equipment; machine equipment - (C4): Manufacture of transport equipment - (C5): Other manufacturing
Sources: Insee, SSP, SOeS

Variation of the Industrial Production

2010 based, SA-WDA changes in %

	Feb. /	Jan. /	Q-o-Q change (1)	Year on year change (2)
NA : A10, (A17)	Jan.	Dec.		
BE: INDUSTRY	0.1	-0.3	0.1	-0.1
CZ: Manufacturing	0.3	0.4	0.8	1.1
(C1): Manufacture of food products and beverages	0.2	0.5	1.6	-0.8
(C2): Manufacture of coke and refined petroleum products	-0.5	14.8	3.4	-6.7
(C3): Electrical and electronic equipment; machine equipment	0.2	-2.2	-0.8	1.0
(C4): Manufacture of transport equipment	0.8	2.7	-0.6	7.0
(C5): Other manufacturing	0.3	0.4	1.2	0.7
(DE): Mining and quarrying; energy; water supply; waste management	-0.6	-3.6	-3.0	-5.2
FZ: CONSTRUCTION	0.7	-3.2	2.3	3.9

(1) Last three months / three previous months
(2) Last three months / three same months of previous year
The codes correspond to the level of aggregation A 10 (A 17) of the "NA" aggregate classification based on NAF rev.2.
Sources: INSEE, SSP, SOeS

Variation of the Industrial Production

2010 based, SA-WDA changes in %

NA : A10, (A17), [A38 ou A64]	Feb. 2014	Feb. / Jan.	Jan. / Dec.	Quarter on quarter change
BE: INDUSTRY	98.7	0.1	-0.3	0.1
CZ: Manufacturing	100.1	0.3	0.4	0.8
(C1): Man. of food products and beverages	100.3	0.2	0.5	1.6
(C2): Man. of coke and refined petroleum products	84.9	-0.5	14.8	3.4
(C3): Electrical and electronic equipment; machine equipment	101.7	0.2	-2.2	-0.8
[CI] Man. of computer, electronic and optical products	106.7	1.9	-2.7	0.1
[CJ] Man. of electrical equipment	95.6	-0.3	-4.4	-0.9
[CK] Man. of machinery and equipment n.e.c. (1)	102.6	-0.4	-0.7	-1.2
(C4): Man. of transport equipment	103.7	0.8	2.7	-0.6
[CL1] Man. of motor vehicles, trailers and semi-trailers	92.9	1.6	-2.0	4.2
[CL2] Man. of other transport equipment	115.9	0.2	7.2	-4.7
(C5): Other manufacturing	99.4	0.3	0.4	1.2
[CB] Man. of textiles, wearing apparel, leather and related products	94.8	0.3	-2.9	-0.4
[CC] Man. of wood and paper products; printing and reproduction of recorded media	89.0	0.5	-1.6	0.8
[CE] Man. of chemicals and chemical products	109.5	-2.4	3.2	3.1
[CF] Man. of basic pharmaceutical products and pharmaceutical preparations	99.1	-0.4	-0.3	-0.2
[CG] Man. of rubber and plastics products, and other non-metallic mineral products	98.0	1.1	-0.6	2.9
[CH] Man. of basic metals and fabricated metal products, except machinery and equipment	99.2	1.5	1.0	1.1
[CM] Other manufacturing; repair and installation of machinery and equipment	101.3	-0.2	0.2	-0.1
(DE): Mining and quarrying; energy; water supply; waste management	92.8	-0.6	-3.6	-3.0
[BZ] Mining and quarrying	96.4	-5.2	7.3	2.6
[DZ] Electricity, gas, steam and air-conditioning supply	90.0	-0.3	-5.2	-3.3
[EZ] Water supply; sewerage, waste management and remediation	110.6	-0.6	1.9	-3.3
FZ: CONSTRUCTION	97.8	0.7	-3.2	2.3
MIGs (2)				
Capital goods	102.9	0.9	0.6	-0.2
Intermediate goods	98.2	0.1	-0.1	1.4
Consumer durables	98.7	0.2	-1.7	-1.2
Consumer non-durables	100.7	-0.3	0.8	1.1
Energy	91.8	-0.3	-3.1	-2.9

(1) n.e.c. : not elsewhere classifiable

(2) Main industrial groupings: definition in Commission regulation EC of June 14th 2007

Sources: Insee, SSP, SOeS

In February 2014, output improved in other manufacturing (+0.3%)...

Output went up in the manufacture of basic metals and fabricated metal products, except machinery and equipment products (+1.5%), in the manufacture of rubber and plastics products, and other non-metallic mineral products (+1.1%) as well as in the manufacture of wood and paper products; printing and reproduction (+0.5%). On the opposite, output declined significantly in the manufacture of chemicals and chemical products (-2.4%) and, to a lesser extent, in the manufacture of basic pharmaceutical products and pharmaceutical preparations (-0.4%) and in other manufacturing; repair and installation of machinery and equipment (-0.2%).

... and in the manufacture of transport equipment (+0.8%).

Output improved moderately in the manufacture of motor vehicles, trailers and semi-trailers (+1.6%) and very slightly in the manufacture of other transport equipment (+0.2%).

Output increased slightly in the manufacture of electrical and electronic equipment; machine equipment (+0.2%)...

Output increased substantially in the manufacture of computer, electronic and optical products (+1.9%) whereas it shrank in the manufacture of machinery and equipment n.e.c. (-0.4%) and in the manufacture of electrical equipment (-0.3%).

... and in the manufacture of food products and beverages (+0.2%).

Output grew by 0.2% in the manufacture of food products and beverages.

• Revisions in January

Measure of variations' revisions

(in point %)

	Jan. / Dec.	Dec. / Nov.	Nov. / Oct.	Q4 2013 / Q3 2013	2013 / 2012
Industry (BE)	-0.10	0.10	0.10	0.10	-0.02
raw serie	0.00	0.10	0.00	0.08	-0.01
SA-WDA coefficient	-0.10	0.00	0.10	0.02	-0.01
Manufacturing (CZ)	-0.30	0.20	0.00	0.07	-0.05
raw serie	0.00	0.10	-0.09	0.04	-0.05
SA-WDA coefficient	-0.30	0.10	0.09	0.03	0.00

Note of reading: in the manufacturing sector, the SA-WDA evolution between December 2013 and January 2014 is revised by -0.30 point: 0.00 is due to the raw serie's revision and -0.30 to the new calculation of the SA-WDA.

Sources: Insee, SSP, SOeS

Learn more:

- Complementary data (long series) and metadata (methodology, linked internet pages...) are available on the HTML page of this index: <http://www.insee.fr/en/themes/info-rapide.asp?id=10>
- Historical data are available on the BDM: [G950](#), [G951](#), [G952](#), [G953](#), [G963](#).
- Press contact: bureau-de-presse@insee.fr

Next issue: May 7 2014, 8:45 AM