

Informations *Rapides*

30 janvier 2014 - n° 28



■ Sales volume in the retail trade and personal services – November 2013

In November 2013, the sales volume increased in retail trade

Every index in this issue is in volume, seasonally and working-day adjusted (SA-WDA).

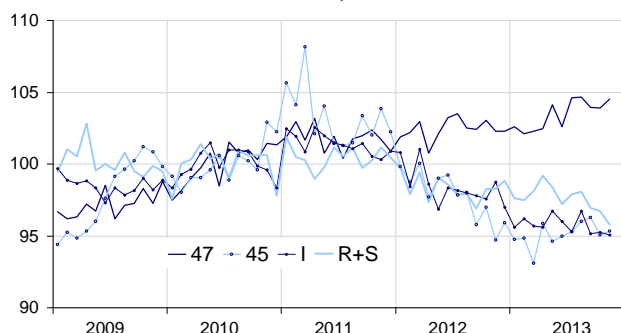
In November 2013, the sales volume increased compared to October in *retail trade except for motor vehicles and motorcycles* (+0.6%) and to a lesser extent in *trade and repair of motor vehicles and motorcycles* (+0.3%). On the contrary, it decreased in *household services* (–1.0%) and it was down slightly in *accommodation and food services activities* (–0.2%).

Over the last three months (q-o-q), the sales volume was nearly stable in *retail trade, except for motor vehicles and motorcycles* and in *trade and repair of motor vehicles and motorcycles* (+0.1%). However, it went back in *household services* (–1.3%) and in *accommodation and food service activities* (–0.9%).

Over the year (y-o-y), the sales volume increased strongly in the *retail trade except for motor vehicles and motorcycles* (+1.5%). On the opposite, it plunged in *accommodation and food services activities* (–2.9%). It declined in *household services* (–1.4%) and marginally in *trade and repair of motor vehicles and motorcycles* (–0.3%).

Volume of sales in the retail trade and personal services

Turnover indices, SA-WDA volume, Base year 2010



Source : INSEE

In December 2013, the sales volume in the retail trade is expected to decline by –1.0%.

Revisions

The change in October has been reviewed by –0.2 point in *household services* and by –0.1 point in *accommodation and food service activities*. For the same month, the variations in *retail trade except for motor vehicles and motorcycle* and in *trade and repair of motor vehicles and motorcycles* were unchanged.

Variation of sales volume in the retail trade and personal services

SA-WDA volume, Base year 2010

NACE Classification	Weight	Change in %			
		Nov./ Oct.	Oct./ Sept.	q-o-q (1)	y-o-y (2)
47 Retail trade, except for motor vehicles and motorcycles	1000	0.6	0.0	0.1	1.5
471 Retail sale in non-specialized stores	369	–1.2	0.1	–0.5	–0.4
472 to 477 Retail sale in specialized stores	573	1.6	–0.1	0.5	2.8
478 and 479 Retail trade not in stores	58	1.4	–0.2	0.6	0.8
45 Trade and repair of motor vehicles and motorcycles	1000	0.3	–1.2	0.1	–0.3
I Accommodation and food service activities	1000	–0.2	0.1	–0.9	–2.9
R+S Household services	1000	–1.0	–0.2	–1.3	–1.4
R Arts, entertainment and recreation	449	–0.6	–1.1	–0.5	–1.2
S Other service activities	551	–1.3	0.5	–1.9	–1.5

(1) Quarter-on-quarter: last three months / three previous months.

(2) Year-on-year: last three months / three same months of the previous year.

Source: INSEE

Variation of sales volume in the retail trade : early estimate*

SA-WDA volume, Base year 2010

	Change in %	
	Dec. 2013/ Nov. 2013	Dec. 2013/ Dec. 2012
47 Retail trade, except for motor vehicles and motorcycles	–1.0	1.1

* Econometric estimate from a set of sources available within 30 days after the end of the reference month

Source: INSEE