

Informations Rapides

1 décembre 2011 - n° 296 **CONJONCTURE**



■ Turnover in the wholesale trade and business services - September 2011

In September 2011, the turnover declined in the wholesale trade and in business support activities

Every index in this issue is in value, seasonally and working-day adjusted.

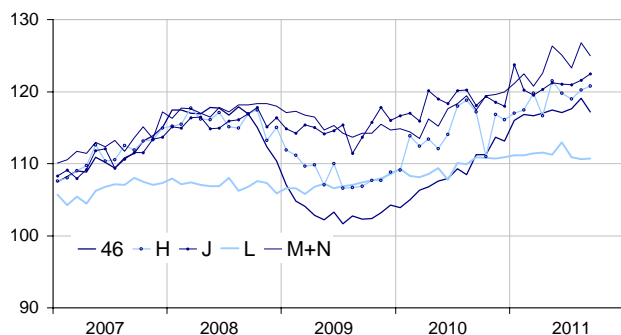
In September 2011, the turnover fell in the *wholesale trade* (−1.6 %) and in *business support activities* (−1.4 %). Conversely, it rose in *information and communication* (+0.7 %) and in *transportation and storage* (+0.5 %). It was broadly stable in *real estate activities* (+0.1 %).

Compared to Q2 2011 (q-o-q), the turnover of Q3 2011 rose in the *wholesale trade* (+0.7 %), in *information and communication* (+0.7 %), in *transportation and storage* (+0.6 %) and in *business support activities* (+0.3 %). Conversely, it declined in *real estate activities* (−1.1 %).

Compared to Q3 2010 (y-o-y), the turnover of Q3 2011 picked up by 7.5 % in the *wholesale trade*. It also grew in *business support activities* (+5.6 %) and, to a lesser extent, in *information and communication* (+1.8 %), in *transportation and storage* (+1.7 %) and in *real estate activities* (+0.4 %).

Wholesale trade and business service

Turnover indices, value SA-WDA, Base year 2005



Source : INSEE

Revisions

The SA-WDA evolution in August has been revised by −0.2 point in *business support activities*. The increase, initially announced at +3.0 %, is corrected at +2.8 %. In

the same period, the SA-WDA evolution has been revised by +0.2 point in *real estate activities*; by +0.1 point in *transportation and storage* and by −0.1 point in the *wholesale trade*. In the same period, the turnover's variation has been confirmed in *information and communication*.

Monthly turnover indices

SA-WDA value, Base year 2005

Classification NAF rev. 2	Weight	Change in %			
		Sept./ Aug.	Aug./ July	q-o-q (1)	y-o-y (2)
46 Wholesale trade, except of motor vehicles and motorcycles	1000	−1.6	1.3	0.7	7.5
Wholesale on a fee or contract basis	166	−1.2	2.7	2.5	8.1
Wholesale of agricultural raw materials and live animals	62	−2.2	−1.5	0.7	19.7
Wholesale of food, beverages and tobacco	183	−3.0	1.9	0.2	5.9
Wholesale of household goods	173	−0.8	2.0	0.9	3.8
Wholesale of professional equipment goods	215	−0.2	1.2	−0.1	5.8
Other specialized wholesale	193	−2.5	0.3	0.4	9.4
H Transportation and storage	1000	0.5	1.0	0.6	1.7
J Information and communication	1000	0.7	0.6	0.7	1.8
L Real estate activities	1000	0.1	−0.3	−1.1	0.4
M+N Business support activities	1000	−1.4	2.8	0.3	5.6
M Professional, scientific and technical activities	626	−0.7	2.6	−0.6	5.3
N Administrative and support service activities	374	−2.7	3.2	1.9	6.2

(1) Quarter-on-quarter: last three months / three previous months.

(2) Year-on-year: last three months / three same months of the previous year.

The codes correspond to different levels of aggregation of the classification NAF rev. 2.

Source: INSEE