

Informations *Rapides*

30 janvier 2014 - n° 27



■ Turnover in the wholesale trade and business services - November 2013

In November 2013, the turnover decreased in the wholesale trade and increased in various business support activities

Every index in this issue is in value, seasonally and working-day adjusted (SA-WDA).

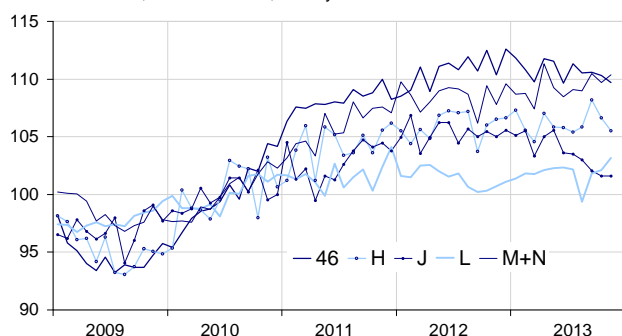
In November 2013, the turnover decreased by 1.1% in *transportation and storage* and by 0.5% in *wholesale trade, except for motor vehicles and motorcycles*. On the opposite, it went up in *real estate activities* (+1.0%) and in *business support activities* (+0.6%). It remained stable in *information and communication* (0.0%).

Over the last three months (q-o-q), the turnover went down sharply in *information and communication* (-1.6%) and to a lesser extent in the *wholesale trade, except for motor vehicles and motorcycle* (-0.3%). On the other hand, it increased in *business support activities* (+1.2%), in *real estate activities* (+1.1%) and in *transportation and storage* (+1.0%).

Over the year (y-o-y), the turnover plunged in *information and communication* (-3.2%) and slid in the *wholesale trade, except for motor vehicles and motorcycles* (-0.9%). On the contrary, it rose significantly in *business support activities* (+2.2%), in *real estate activities* (+1.9%) and in *transportation and storage* (+1.3%).

Wholesale trade and business services

Turnover indices, SA-WDA value, Base year 2010



Source : INSEE

Revisions

The evolution in October has been reviewed by -0.7 point in *information and communication*, by -0.5 point in *transportation and storage*, by -0.1 point in *business support activities* and by +0.2 point in *real estate activities* and in the *wholesale trade, except for motor vehicles and motorcycles*.

Variation of the turnover in the wholesale trade and business services

SA-WDA value, Base year 2010

Nace classification	Weight	Change in %			
		Nov./ Oct.	Oct./ Sept.	q-o-q (1)	y-o-y (2)
46 Wholesale trade, except for motor vehicles and motorcycles	1000	-0.5	-0.2	-0.3	-0.9
H Transportation and storage	1000	-1.1	-1.4	1.0	1.3
J Information and communication	1000	0.0	-0.5	-1.6	-3.2
L Real estate activities	1000	1.0	0.3	1.1	1.9
M+N Business support activities	1000	0.6	-0.7	1.2	2.2
M Professional, scientific and technical activities	579	1.1	-0.2	2.0	2.9
N Administrative and support service activities	421	-0.1	-1.3	0.2	1.3

(1) Quarter-on-quarter: last three months / three previous months.

(2) Year-on-year: last three months / three same months of the previous year.

Source : INSEE