

Informations Rapides

25 novembre 2013 - n° 268
Principaux Indicateurs



■ Monthly business survey in services – November 2013

In November 2013, the business climate improves again in services

• All services sector

According to business managers, the economic situation in services improves again in November 2013. The business climate composite indicator rises by three points, and reaches 96, still slightly below its long-term average (100). The turning point indicator indicates a favorable economic outlook dynamic.

Business managers consider that their activity has recovered in the last few months and more of them anticipate a further upturn. However, their expectations of demand don't improve. The general outlook is stable and remains below its long-term average.

Employment has improved

In services sector except temporary employment agencies, slightly fewer business managers than in October anticipate a decline in employment over the coming months.

Economic outlook in the services sector

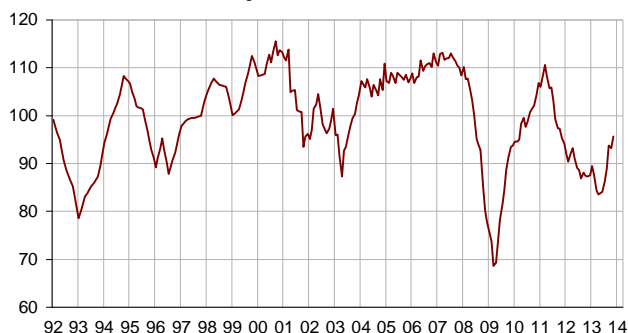
Balances of opinion, in %, seasonally adjusted

	Average*	Aug. 13	Sept. 13	Oct. 13	Nov. 13
Composite indicator	100	89	94	93	96
General outlook	-7	-20	-15	-14	-15
Past activity	3	-16	-12	-7	-1
Expected activity	2	-11	-6	-7	-1
Expected demand	0	-8	-2	-2	-4
Business situation	-2	-14	-10	-11	-9
Past selling prices	-3	-11	-10	-12	-13
Expected selling prices	-2	-10	-10	-10	-7
Past employment except temporary work agencies	3	-7	-1	-4	2
Expected employment except temporary work agencies	1	-11	-6	-7	-5
Expected employment except temporary work agencies	2	-4	-1	0	-1
Investments	0	-7	-8	-6	-4
Past investments	1	-5	-5	-3	1
Expected investments	1	-1	1	0	-2

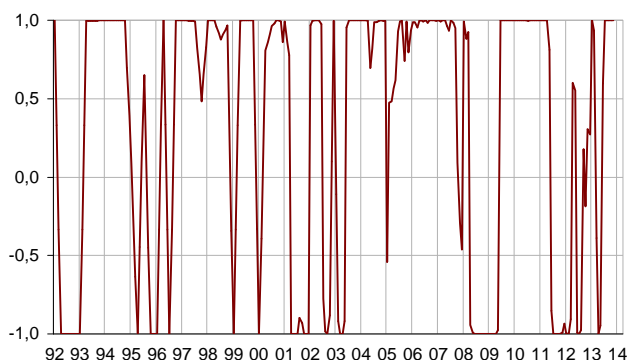
* Average of the balances of opinion since 1988
Source: Insee

Composite indicator

Standardized indicator : average = 100 and standard deviation = 10



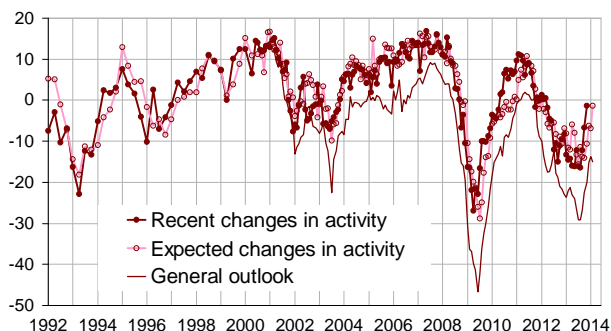
Turning point indicator



Note: close to 1 (respectively -1), this indicator indicates a favorable short-term economic situation (respectively unfavorable).

Activity

Balances of opinion, in %, seasonally adjusted



- **Road transport**

In road freight and mail activities, business managers assess that activity has recovered in the recent period. According to them, this improvement will continue in the coming months.

- **Accommodation and food service activities**

In accommodation and food service activities, fewer business managers than in October believe that activity has deteriorated in the recent months. However, their business expectations and demand are deteriorating.

- **Information and communication**

In information and communication, the balance of opinion on past activity has increased over the last few months. Less business managers anticipate a decline of activity for the next three months.

- **Real estate activities**

In real estate activities, the balance of opinion on past activity is almost stable. Business managers' expectations of activity and demand are less optimistic than in October.

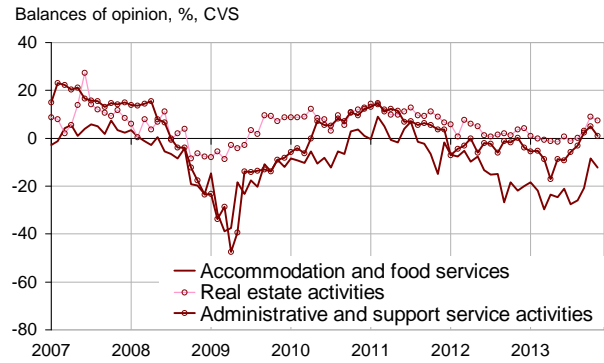
- **Professional, scientific and technical activities**

In professional, scientific and technical activities, business managers consider that activity has remained lackluster in recent months. Their demand expectations are pessimistic.

- **Administrative and support service activities**

In administrative and support service activities, business managers indicate that activity and employment have rebounded in the recent period. They revise their forecasts of activity and recruitment downward for the next few months.

Expected activity



Detailed data

Balances of opinion, in %, seasonally adjusted

A21	Average*	Aug. 13	Sept. 13	Oct. 13	Nov. 13
(H) Road transport					
Past activity	-8	-21	-19	-8	-5
Expected activity	-9	-21	-10	-4	3
Expected demand	-13	-21	-13	-7	-8
Past employment	-8	-8	-11	-6	-5
Expected employment	-11	-15	-11	-6	-4
(I) Accommodation and food service activities					
Past activity	-7	-21	-19	-19	-13
Expected activity	-7	-26	-21	-8	-12
Expected demand	-9	-27	-14	-8	-13
Past employment	-4	-22	-11	-14	-14
Expected employment	-5	-17	-13	-11	-9
(J) Information and communication					
Past activity	10	-33	-28	-10	0
Expected activity	12	-12	-3	-21	-1
Expected demand	12	0	11	5	7
Past employment	7	-11	-16	-9	-5
Expected employment	12	-7	-5	1	3
(L) Real estate activities					
Past activity	7	2	4	0	-1
Expected activity	8	0	3	9	7
Expected demand	2	-4	0	2	-3
Past employment	3	-5	-1	-5	0
Expected employment	2	1	-5	-2	2
(M) Professional, scientific and technical activities					
Past activity	-1	-13	-9	-3	-5
Expected activity	-2	-9	-11	-11	-9
Expected demand	-5	-13	-12	-10	-13
Past employment	1	-6	-6	-6	0
Expected employment	0	-5	-7	-5	-5
(N) Administrative and support service activities					
Past activity	6	-8	-3	1	8
Expected activity	5	-3	2	5	1
Expected demand	3	3	1	0	-3
Past employment	8	1	13	2	24
Expected employment	6	8	13	10	5

* Average of the balances of opinion since 1988 (2006 for road transport)

For further information:

A balance of opinion is calculated as the difference between the percentage of response "increase" and the percentage of response "decrease".

- Additional information (long series, methodology, links...) is available on the HTML page of this indicator:

<http://www.insee.fr/fr/themes/indicateur.asp?id=62>

- Historical data are available on the BDM: [G1244](#), [G1245](#), [G1246](#).

- Press contact: bureau-de-presse@insee.fr

Next publication: 20 12 2013 at 08h45