

# Informations *Rapides*



10 octobre 2012 - n° 250 **CONJONCTURE**

## Main indicators

### Industrial Production Indices – August 2012

## In August 2012, manufacturing output increased (+1.8%)

In August 2012, **manufacturing output** increased sharply in volume (+1.8%). This rise concerns to very small volumes, in particular in the *manufacture of transport equipment*.

Output increased as well in **total industry** (+1.5%).

### During the last three months, manufacturing output went up (+0.7%)...

During the last three months (quarter-on-quarter change), output went up in the manufacturing sector by 0.7%, as well as in the industry as a whole (+0.2%).

Output increased in the *manufacture of transport equipment* (+2.1%), and, in a more sustained pace, in the *other manufacturing* (+0.4%) and in the *manufacture of electrical and electronic equipment* (+0.3%).

Output rose considerably in the *manufacture of coke and refined petroleum products* (+11.5%) through the recovery of refineries since June.

### ...and was lower than its last year's level by 1.9%

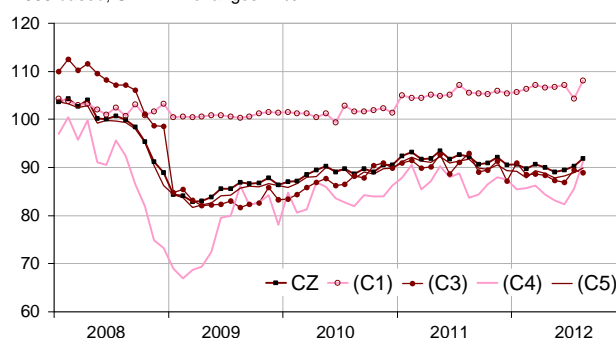
Manufacturing output decreased by 1.9% (y-o-y).

It decreased significantly in the *other manufacturing* (-2.6%) and in the *manufacture of electrical and electronic equipment and machine equipment* (-2.7%). To a lesser extent, it also decreased in the *manufacture of transport equipment* (-0.5%).

Please note: all the series are adjusted for seasonal variations (SA) and the number of working days (WDA).

### Monthly industrial Production indexes

2005 based, SA-WDA changes in %



Legend : CZ : Manufacturing - (C1) : Manufacture of food products and beverages - (C3) : Electrical and electronic equipment; machine equipment - (C4) : Manufacture of transport equipment - (C5) : Other manufacturing

Sources : Insee, SSP, SOeS

### Variation of the Industrial Production

2005 based, SA-WDA changes in %

NA : A10, (A17)	Aug. / July	July / June	Q-o-Q change	Year on year change (1)
<b>BE: INDUSTRY</b>	<b>1.5</b>	<b>0.6</b>	<b>0.2</b>	<b>-2.0</b>
<b>CZ: Manufacturing</b>	<b>1.8</b>	<b>1.0</b>	<b>0.7</b>	<b>-1.9</b>
(C1): Manufacture of food products and beverages	3.6	-2.6	-0.3	0.5
(C2): Manufacture of coke and refined petroleum products	-	2.6	4.1	11.5
(C3): Electrical and electronic equipment; machine equipment	-	0.7	3.0	0.3
(C4): Manufacture of transport equipment	6.5	3.9	2.1	-0.5
(C5): Other manufacturing	1.0	0.7	0.4	-2.6
(DE): Mining and quarrying; energy; water supply; waste management	0.2	-2.2	-3.0	-2.7
<b>FZ: CONSTRUCTION</b>	<b>1.4</b>	<b>-0.1</b>	<b>0.4</b>	<b>-1.0</b>

(1) Last three months / three previous months

(2) Last three months / three same months of previous year

The codes correspond to the level of aggregation A 10 (A 17) of the "NA" aggregate classification based on NAF rev.2.

Sources : INSEE, SSP, SOeS

## Variation of the Industrial Production

2005 based, SA-WDA changes in %

NA : A10, (A17), [A38 ou A64]	Aug. 2012	Aug. / July	July / June	Quar- ter on quarter change
<b>BE: INDUSTRY</b>	<b>92.2</b>	<b>1.5</b>	<b>0.6</b>	<b>0.2</b>
<b>CZ: Manufacturing</b>	<b>91.9</b>	<b>1.8</b>	<b>1.0</b>	<b>0.7</b>
<b>(C1): Man. of food products and beverages</b>	<b>108.1</b>	<b>3.6</b>	<b>-2.6</b>	<b>-0.3</b>
<b>(C2): Man. of coke and refined petroleum products</b>	<b>72.5</b>	<b>-2.6</b>	<b>4.1</b>	<b>11.5</b>
<b>(C3): Electrical and electronic equipment; machine equipment</b>	<b>88.9</b>	<b>-0.7</b>	<b>3.0</b>	<b>0.3</b>
[CI] Man. of computer, electronic and optical products	91.3	-0.9	6.5	-2.4
[CJ] Man. of electrical equipment	94.9	-1.4	0.4	1.1
[CK] Man. of machinery and equipment n.e.c. (1)	83.6	0.0	1.7	2.0
<b>(C4): Man. of transport equipment</b>	<b>91.2</b>	<b>6.5</b>	<b>3.9</b>	<b>2.1</b>
[CL1] Man. of motor vehicles, trailers and semi-trailers	72.4	9.9	4.9	4.3
[CL2] Man. of other transport equipment	129.4	2.9	2.9	-0.3
<b>(C5): Other manufacturing</b>	<b>89.8</b>	<b>1.0</b>	<b>0.7</b>	<b>0.4</b>
[CB] Man. of textiles, wearing apparel, leather and related products	59.8	1.4	-0.7	2.4
[CC] Man. of wood and paper products; printing and reproduction of recorded media	75.5	1.5	-3.0	-0.3
[CE] Man. of chemicals and chemical products	110.2	-1.3	-0.2	-1.8
[CF] Man. of basic pharmaceutical products and pharmaceutical preparations	114.7	0.6	0.5	0.5
[CG] Man. of rubber and plastics products, and other non-metallic mineral products	83.6	3.9	-0.1	-1.2
[CH] Man. of basic metals and fabricated metal products, except machinery and equipment	81.2	1.9	0.6	0.7
[CM] Other manufacturing; repair and installation of machinery and equipment	105.2	-1.5	4.4	3.3
<b>(DE): Mining and quarrying; energy; water supply; waste management</b>	<b>94.2</b>	<b>0.2</b>	<b>-2.2</b>	<b>-3.0</b>
[BZ] Mining and quarrying	89.0	-1.4	7.6	0.2
[DZ] Electricity, gas, steam and air-conditioning supply	92.1	-0.1	-3.6	-4.1
[EZ] Water supply; sewerage, waste management and remediation	117.2	3.4	2.5	4.1
<b>FZ: CONSTRUCTION</b>	<b>96.0</b>	<b>1.4</b>	<b>-0.1</b>	<b>0.4</b>
<b>MIGs (2)</b>				
Capital goods	92.7	2.1	4.4	1.7
Intermediate goods	85.1	1.6	0.0	-0.3
Consumer durables	85.3	0.4	1.6	3.3
Consumer non-durables	104.2	1.9	-1.5	-0.1

(1) n.e.c. : not elsewhere classifiable

(2) Main industrial groupings : definition in Commission regulation EC of 14 June 2007

Sources : Insee, SSP, SOeS

## Output increased strongly in the manufacture of transport equipment (+6.5%)...

Output increased dramatically in the manufacture of motor vehicles, trailers and semi-trailers (+9.9%). It also increased in the manufacture of other transport equipment (+2.9%).

## ...and in the manufacture of food products and beverages (+3.6%)

The rise in the manufacture of food products and beverages (+3.6%) was attributable to a rebound from oils and the rise of drinks due to the temperature increase in August.

## Output also rose in the « other manufacturing » (+1.0%)

Output increased in the manufacture of rubber and plastics products, and other non-metallic mineral products (+3.9%), in the manufacture of basic metals and fabricated metal products, except machinery and equipment (+1.9%), in the manufacture of wood and paper products; printing and reproduction of record media (+1.5%) and in the manufacture of basic pharmaceutical products and pharmaceutical preparations (+0.6%). On the other hand, output went down in the other manufacturing, repair and installation of machinery and equipment (-1.5%) and in the manufacture of chemicals and chemical products (-1.3%).

## On the contrary, output decreased moderately in the manufacture of electrical and electronic equipment, machine equipment (-0.7%)

Output went down in the manufacture of electrical equipment (-1.4%) and in the manufacture of computer, electronic and optical products (-0.9%). It was stable in the manufacture of machinery and equipment n.e.c. .

## • Revisions: +0.11 in July

### Measure of variations' revisions

	(in point %)				
	July / June	June / May	May / April	Q2 2012 / Q1 2012	2011 / 2010
<b>Industry (BE)</b>	<b>0.33</b>	<b>0.11</b>	<b>0.22</b>	<b>0.29</b>	<b>0.02</b>
raw serie	0.01	0.24	0.00	0.10	0.01
SA-WDA coefficient	0.32	-0.13	0.22	0.19	0.01
<b>Manufacturing (CZ)</b>	<b>0.11</b>	<b>0.34</b>	<b>0.11</b>	<b>0.26</b>	<b>0.04</b>
raw serie	-0.10	0.24	0.00	0.11	0.02
SA-WDA coefficient	0.21	0.10	0.11	0.15	0.02

Note of reading : in the manufacturing, the SA-WDA evolution between June and July is revised by 0.11 point : -0.10 is due to the raw serie's revision and 0.21 to the new calculation of the SA-WDA.

Sources : Insee, SSP, SOeS

## Learn more:

- Complementary data (long series) and metadata (methodology, linked internet pages...) are available on the HTML page of this index: <http://www.insee.fr/en/themes/info-rapide.asp?id=10>
- Historical data are available on the BDM: [G950](#), [G951](#), [G952](#), [G953](#), [G963](#).
- Press contact: [bureau-de-presse@insee.fr](mailto:bureau-de-presse@insee.fr)

Next issue: November 9 2012, 8:45 AM