

Informations Rapides

2 avril 2014 - n° 76



■ Turnover in industry and construction – January 2014

In January 2014, the turnover in manufacturing industry remained stable compared to November (0.0%)

This publication is released on the 2nd of April instead of the 31st of March as announced because of a delay in the reception of the administrative data used to calculate the indexes.

Every index in this issue is in value, seasonally and working day adjusted.

The commentary shows evolutions of subsections by decreasing contributions. The contribution of a subsection depends on the extent of the evolution and on its weight.

In January 2014, the turnover stabilized in the **manufacturing industry** (0.0%) after a slight decrease in December (-0.2%). Exports rebounded (+1.7%). The turnover went down moderately in the **industry as a whole** (-0.5%, after +0.6% in December).

Decline over the last three months (-0.5%)

Over the quarter (q-o-q), the turnover dipped in the **manufacturing industry** (-0.5%) and went down very slightly in the **industry as a whole** (-0.2%).

It slid in **other manufacturing** (-0.5%) because of a substantial decline in the **manufacture of basic pharmaceutical products and pharmaceutical preparations** (-3.6%). It dropped in the **manufacture of coke and refined petroleum products** (-2.7%). It fell moderately in the **electrical and electronic equipment; machine equipment** (-0.5%), and in the **manufacture of transport equipments** (-0.2%), due to a decline in the **manufacture of other transport equipments** (-1.2%). It stabilized in the **manufacture of food products and beverages** (+0.1%).

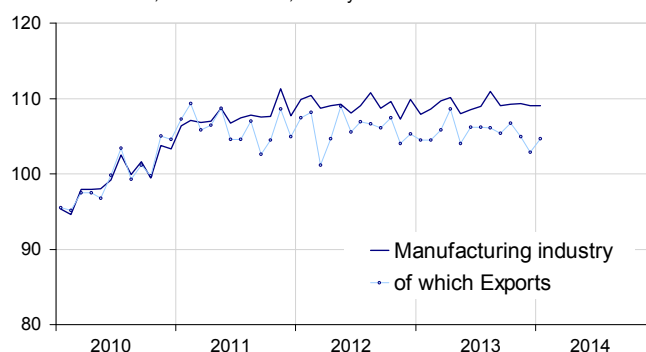
Growth over the last year (+0.7%)

Year-on-year, the turnover rose in the **manufacturing industry** (+0.7%).

It surged in the **manufacture of transport equipment** (+4.7%) and it grew moderately in the **manufacture of food products and beverages** (+0.8%). Conversely, it declined in the **manufacture of coke and refined petroleum products** (-1.3%), and fell slightly in the **electrical and electronic equipments; machine equipment** (-0.4%). It levelled off in **other manufacturing** (0.0%).

Turnover in manufacturing industry

Turnover indexes, value SA-WDA, Base year 2010



Source: INSEE

Variation of the turnover in industry and construction

SA-WDA value, Base year 2010

NA : A 10, (A 17)	Weight**	Jan./ Dec.	Dec./ Nov.	q-o-q (1)	y-o-y (2)
BE : INDUSTRY	10000	-0.5	0.6	-0.2	0.6
CZ : MANUFACTURING	8373	0.0	-0.2	-0.5	0.7
Of which Exports	2731	1.7	-1.9	-1.8	-0.4
(C1): Manufacture of food products and beverages	1647	1.5	1.1	0.1	0.8
(C2): Manufacture of coke and refined petroleum products	478	4.7	-4.8	-2.7	-1.3
(C3): Electrical and electronic equipment; machine equipment	1005	-1.4	1.3	-0.5	-0.4
(C4): Manufacture of transport equipment	1428	-0.6	-2.8	-0.2	4.7
(C5): Other manufacturing	3815	-0.6	0.4	-0.5	0.0
DE: Mining and quarrying; energy; water supply; waste management	1627	-2.7	4.9	1.3	-0.3
FZ: CONSTRUCTION	10000	-3.3	2.5	0.3	1.0

** 10000=B...E and F

(1) Quarter-on-quarter: last three months / three previous months

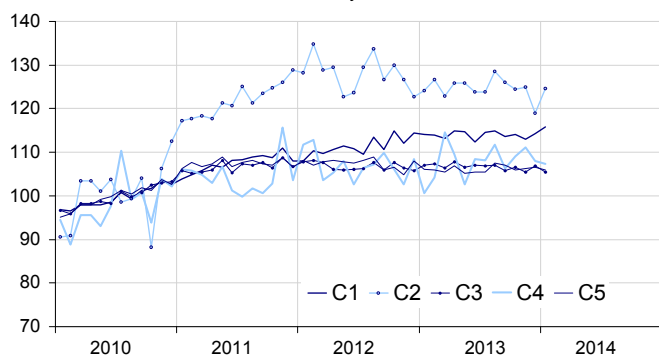
(2) Year-on-year: last three months / three same months of previous year

The codes correspond to different levels of aggregation of the NACE classification.

Source: INSEE

Turnover in manufacturing industry

Turnover indexes, value SA-WDA, Base year 2010



Source: INSEE

In January 2014, the turnover went down in other manufacturing (-0.6%)

In January, the turnover declined moderately in *other manufacturing* (-0.6%) after a two months in a row rise. It fell mainly in the *manufacture of chemicals and chemical products* (-1.3%), the *manufacture of basic pharmaceutical products and pharmaceutical preparations* (-2.3%) and *other manufacturing: repair and installation of machinery and equipment* (-0.9%).

Fall in the electrical and electronic equipments (-1.4%)...

In January, the turnover decreased significantly in the *electrical and electronic equipment; machine equipment* (-1.4%) after a rise in December (+1.3%). It fell in the *manufacture of computer, electronic and optical products* (-1.9%), the *manufacture of electrical equipment* (-1.8%) and the *manufacture of machinery and equipment n.e.c.* (-1.1%).

... and in transport equipment (-0.6%)

The turnover went down in January in the *manufacture of transport equipment* (-0.6%, after -2.8% in December). It plunged in the *manufacture of other transport equipment* (-2.6%) after a sharp rise in December. Conversely, it bounced back in the *manufacture of motor vehicles, trailers and semi-trailers* (+1.1%).

Growth in food products and beverages (+1.5%)

The turnover in the *manufacture of food products and beverages* rose again in January (+1.5%, after +1.1% in December).

Rebound in coke and refined petroleum (+4.7%)

The turnover rallied in the *manufacture of coke and refined petroleum products* (+4.7%) after a dramatic fall in December (-4.8%).

• Revisions

In the *manufacturing industry*, the evolution of the turnover in December was revised at -0.2%, instead of -0.5% initially published. The main correction concerned the *manufacture of other transport equipment*.

Indexes of turnover in industry and construction

SA-WDA, based year 2010

Industries :	Weight*	Jan. 2014	Jan./ Dec.	Dec./ Nov.	q-o-q (1)
BE: INDUSTRY	10000	109.5	-0.5	0.6	-0.2
CZ: MANUFACTURING	8373	109.1	0.0	-0.2	-0.5
of which Exports	2731	104.7	1.7	-1.9	-1.8
(C1): Man. of food products and beverages	1647	115.9	1.5	1.1	0.1
of which Exports	284	121.4	2.8	0.8	1.1
(C2): Man. of coke and refined petroleum products	478	124.6	4.7	-4.8	-2.7
(C3): Electrical and electronic equipment; machine equipment	1005	105.4	-1.4	1.3	-0.5
of which Exports	483	100.3	-0.7	-1.5	-2.0
[CI] Man. of computer, electronic and optical products	269	100.8	-1.9	3.1	-0.4
[CJ] Man. of electrical equipment	302	100.0	-1.8	0.1	-1.1
[CK] Man. of machinery and equipment n.e.c.	434	111.9	-1.1	1.3	-0.2
(C4): Man. of transport equipment	1428	107.4	-0.6	-2.8	-0.2
of which Exports	693	95.6	1.3	-2.0	-6.0
[CL1] Man. of motor vehicles, trailers and semi-trailers	689	91.9	-2.6	2.3	1.5
[CL2] Man. of other transport equipment	739	121.9	1.1	-6.3	-1.2
(C5): Other manufacturing	3815	106.0	-0.6	0.4	-0.5
of which Exports	1213	106.6	1.8	-1.9	0.2
[CB] Man. of textiles, wearing apparel, leather and related products	191	109.0	-0.5	0.2	0.4
[CC] Man. of wood and paper products; printing and reproduction of recorded media	427	101.7	0.1	0.3	-1.3
[CE] Man. of chemicals and chemical products	706	106.7	-1.3	-0.2	-1.1
[CF] Man. of basic pharmaceutical products and pharmaceutical preparations	322	96.9	-2.3	-0.7	-3.6
[CG] Man. of rubber and plastics products, and other non-metallic mineral products	620	105.9	0.2	1.5	-0.6
[CH] Man. of basic metals and fabricated metal products, except machinery and equipment	900	106.3	-0.3	0.4	-0.4
[CM] Other manufacturing; repair and installation of machinery and equipment	649	111.1	-0.9	0.8	1.5
DE: Mining and quarrying; energy, water supply, sewerage, waste management	1627	111.3	-2.7	4.9	1.3
[BZ] Mining and quarrying	69	110.9	0.2	5.5	-2.1
[DZ] Electricity, gas, steam and air-conditioning supply	1216	113.1	-2.9	5.8	1.8
[EZ] Water supply; sewerage, waste management and remediation	342	105.1	-2.4	1.0	0.7
FZ: CONSTRUCTION	10000	104.7	-3.3	2.5	0.3

** 10000=B...E and F

(1) Quarter-on-quarter: last three months / three previous months

Source: INSEE

Measure of variations' revisions

(in point %)

	Dec./ Nov.	Nov./ Oct.	Oct./ Sept.	Q4 2013/ Q3 2013	2013/ 2012
Industry (BE)	0.82	0.00	0.00	0.33	0.11
raw serie	1.19	0.00	0.00	0.42	0.10
SA-WDA coeff.	-0.36	0.00	0.00	-0.08	0.01
Manufacturing industry (CZ)	0.37	0.00	-0.09	0.06	0.06
raw serie	0.63	0.00	0.00	0.22	0.05
SA-WDA coeff.	-0.27	0.00	-0.09	-0.16	0.01

Foot note: in the industry, the SA-WDA evolution between November and December 2013 is revised by +0.82 point: +1.19 point is due to the raw serie's revision and -0.36 to the new calculation of the SA-WDA.

Source: INSEE

For further information:

- Complementary data (long series) and metadata (methodology, linked internet pages...) are available on the HTML page of this index: <http://www.insee.fr/fr/themes/info-rapide.asp?id=53>
- Historical data are available on the BDM: [G1444](#), [G1445](#), [G1446](#), [G1447](#), [G1448](#) and [G1529](#)
- Press contact: bureau-de-presse@insee.fr

Next issue: April 30th, 2014