

Informations *Rapides*

28 juin 2013 - n° 153



■ Turnover in the wholesale trade and business services - April 2013

In April 2013, the turnover took off in the wholesale trade and business services

Every index in this issue is in value, seasonally and working-day adjusted (SA-WDA).

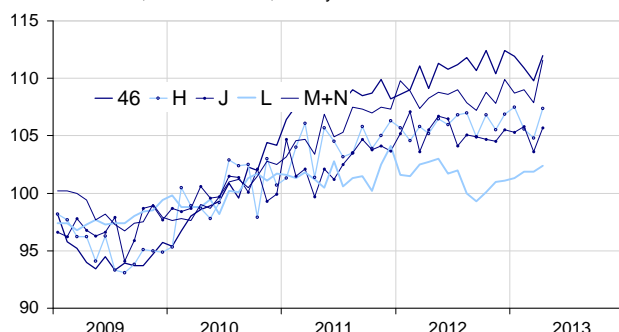
In April 2013, the turnover improved in *business support activities* (+3.4%), in *transportation and storage* (+2.5%), in the *wholesale trade, except for motor vehicles and motorcycles* (+2.0%), in *information and communication* (+2.0%) and, to a lesser extent, in *real estate activities* (+0.5%).

Over the quarter (q-o-q), the turnover rose in *real estate activities* (+0.9%) and in *business support activities* (+0.6%). Conversely, it went down in *transportation and storage* (–0.7%) and in the *wholesale trade, except for motor vehicles and motorcycles* (–0.6%). It was broadly steady in *information and communication* (–0.1%).

Over the year (y-o-y), the turnover increased in *business support activities* (+1.2%), in the *wholesale trade, except for motor vehicles and motorcycles* (+1.1%) and in *transportation and storage* (+0.7%). It was broadly stable in *information and communication* (–0.3%) and in *real estate activities* (–0.2%).

Wholesale trade and business services

Turnover indices, SA-WDA value, Base year 2010



Source : INSEE

Revisions

The evolution in March has been revised by +0.2 point in *information and communication*. The variation, announced at –2.3% last month, has been corrected at –2.1%. In the same period, the evolution has been revised by +0.1 point in the *wholesale trade, except for motor vehicles and motorcycles*. The turnover's variation has been confirmed in *business support activities*, in *transportation and storage* and in *real estate activities*.

Variation of the turnover in the wholesale trade and business services

SA-WDA value, Base year 2010

Nace classification	Weight	Change in %			
		April/ March	March/ Feb.	q-o-q (1)	y-o-y (2)
46 Wholesale trade, except for motor vehicles and motorcycles	1000	2.0	–1.0	–0.6	1.1
H Transportation and storage	1000	2.5	–0.8	–0.7	0.7
J Information and communication	1000	2.0	–2.1	–0.1	–0.3
L Real estate activities	1000	0.5	0.0	0.9	–0.2
M+N Business support activities	1000	3.4	–1.0	0.6	1.2
M Professional, scientific and technical activities	579	3.3	–1.1	1.2	1.8
N Administrative and support service activities	421	3.4	–0.9	–0.1	0.3

(1) Quarter-on-quarter: last three months / three previous months.

(2) Year-on-year: last three months / three same months of the previous year.

Source: INSEE