

Informations *Rapides*

31 mai 2013 - n° 129



■ Turnover in the wholesale trade and business services - March 2013

In March 2013, the turnover declined in the wholesale trade and business services

Every index in this issue is in value, seasonally and working-day adjusted (SA-WDA).

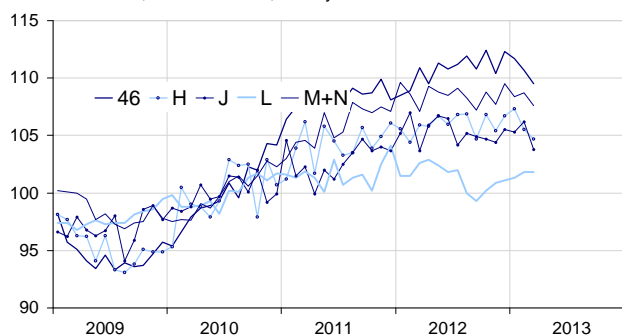
In March 2013, the turnover declined in *information and communication* (–2.3%), in the *wholesale trade, except for motor vehicles and motorcycles* (–1.1%), in *business support activities* (–1.0%) and in *transportation and storage* (–0.8%). It was steady in *real estate activities* (0.0%).

Over the first quarter 2013, the turnover fell in the *wholesale trade, except for motor vehicles and motorcycles* (–1.0%, q-o-q), in *transportation and storage* (–0.4%) and in *business support activities* (–0.4%). Conversely, it rose in *real estate activities* (+0.9%). It was broadly steady in *information and communication* (+0.2%).

Over the year 2013, the turnover grew in the *wholesale trade, except for motor vehicles and motorcycles* (+1.1%, y-o-y) and in *transportation and storage* (+0.5%). It was broadly steady in *information and communication* (–0.2%), in *real estate activities* (–0.2%) and in *business support activities* (–0.2%).

Wholesale trade and business services

Turnover indices, SA-WDA value, Base year 2010



Source : INSEE

Revisions

The evolution in February has been revised by –1.8 point in *transportation and storage*. The variation, announced at +0.1% last month, has been corrected at –1.7%. In the same period, the evolution has been revised by –0.3 point in *business support activities* and by –0.2 point in the *wholesale trade, except for motor vehicles and motorcycles*. The turnover's variation has been confirmed in *information and communication* and in *real estate activities*.

Variation of the turnover in the wholesale trade and business services

SA-WDA value, Base year 2010

Nace classification	Weight	Change in %			
		March/ Feb.	Feb./ Jan.	q-o-q (1)	y-o-y (2)
46 Wholesale trade, except for motor vehicles and motorcycles	1000	–1.1	–0.9	–1.0	1.1
H Transportation and storage	1000	–0.8	–1.7	–0.4	0.5
J Information and communication	1000	–2.3	0.9	0.2	–0.2
L Real estate activities	1000	0.0	0.5	0.9	–0.2
M+N Business support activities	1000	–1.0	0.3	–0.4	–0.2
<i>M Professional, scientific and technical activities</i>	579	–0.7	0.8	0.2	0.2
<i>N Administrative and support service activities</i>	421	–1.2	–0.5	–1.1	–0.6

(1) Quarter-on-quarter: last three months / three previous months.

(2) Year-on-year: last three months / three same months of the previous year.

Source: INSEE