

Informations *Rapides*



4 janvier 2012 - n° 5 **CONJONCTURE**

■ Turnover in the retail trade and personal services - October 2011

In October 2011, the turnover declined in the trade and repair of motor vehicles and motorcycles and rose in household services

Every index in this issue is in volume, seasonally and working-day adjusted.

In October 2011, the turnover fell in the *trade and repair of motor vehicles and motorcycles* (−0.7 %) and in *accommodation and food service activities* (−0.4 %). On the contrary, it rose in *household services* (+0.7 %) and in the *retail trade, except of motor vehicles and motorcycles* (+0.4 %).

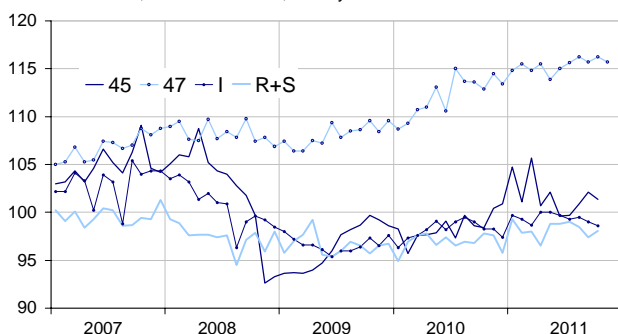
Quarter on quarter (q-o-q), the turnover grew in the *retail trade* (+1.1 %) and the *trade and repair of motor vehicles and motorcycles* (+1.0 %). It decreased in *household services* (−0.9 %) and in *accommodation and food service activities* (−0.6 %).

Year on year (y-o-y), the turnover expanded in the *trade and repair of motor vehicles and motorcycles* (+2.6 %), in the *retail trade* (+2.3 %) and in *households services* (+0.9 %). Conversely, it was broadly stable in *accommodation and food services activities* (+0.1 %).

According to our estimate, the turnover in the *retail trade* is expected to decrease in November 2011 (−0.5 %).

Retail trade and personal services

Turnover indices, volume SA-WDA, Base year 2005



Source : INSEE

Please note that the « retail trade... » chart (47) includes the early estimate for November 2011.

Revisions

The SA-WDA evolution in September has been revised by +0.1 point in the *trade and repair of motor vehicles and motorcycles* and in the *retail trade*. In the same period, the turnover's variation has been confirmed in *household services* and in *accommodation and food service activities*.

Monthly turnover indices

SA-WDA volume, Base year 2005

Classification NAF rev. 2	Weight	Change in %			
		Oct./ Sept.	Sept./ Aug.	q-o-q (1)	y-o-y (2)
45 Trade and repair of motor vehicles and motorcycles	1000	−0.7	1.2	1.0	2.6
47 Retail trade, except of motor vehicles and motorcycles	1000	0.4	−0.4	1.1	2.3
471 Retail sale in non-specialised stores	415	0.2	0.4	0.9	1.1
472 to 477 Retail sale in specialised stores	545	0.7	−1.0	1.3	3.1
478 and 479 Retail trade not in stores	40	−1.5	0.1	1.1	1.9
I Accommodation and food service activities	1000	−0.4	−0.5	−0.6	0.1
R+S Households services	1000	0.7	−1.1	−0.9	0.9
R Arts, entertainment and recreation	472	1.6	−1.6	−1.9	2.3
S Other service activities	528	−0.1	−0.7	0.0	−0.6

(1) Quarter-on-quarter: last three months / three previous months.

(2) Year-on-year: last three months / three same months of the previous year.

The codes correspond to different levels of aggregation of the classification NAF rev.2.

Source: INSEE

Turnover indices: early estimate*

SA-WDA volume, Base year 2005

	Change in %	
	Nov. 2011/ Oct. 2011	Nov. 2011/ Nov. 2010
47 Retail trade...	−0.5	1.0

* Econometric estimate from a set of sources available within 30 days after the end of the reference month

Source: INSEE