

Informations Rapides

10 février 2014 - n° 33

Main indicators



Industrial Production Indices – December 2013

In December 2013, manufacturing output was stable

In December 2013, **manufacturing output** was stable (0.0%, after +0.2% in November). Output decreased slightly in **industrial production as a whole** (−0.3%, after +1.2% last month).

During the last quarter, manufacturing output improved by +0.5%...

During the last quarter (q-o-q), output improved moderately in the manufacturing sector (+0.5%), as well as in industry as a whole (+0.3%).

Output increased in the *manufacture of electrical and electronic equipment; machine equipment* (+2.6%), in the *manufacture of transport equipment* (+1.3%) and remained stable in *other manufacturing* (+0.1%). Meanwhile, output slumped by 7.0% in the *manufacture of coke and refined petroleum products*. It went down to a lesser extent in the *manufacture of food products and beverages* (−0.9%).

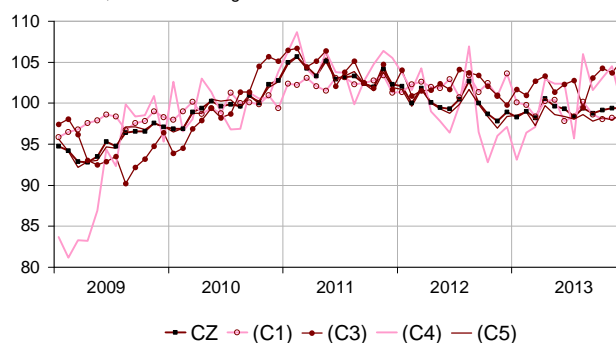
...and was higher than its last year's level by 0.9%.

Manufacturing output went up by 0.9% (y-o-y). Output soared in the *manufacture of transport equipment* (+7.5%) and improved in a less sustain pace in the *manufacture of electrical and electronic equipment; machine equipment* (+3.4%). It increased slightly in *other manufacturing* (+0.4%). On the opposite, output declined in the *manufacture of food products and beverages* (−4.1%) as well as in the *manufacture of coke and refined petroleum products* (−10.1%).

Please note: all the series are adjusted for seasonal variations (SA) and the number of working days (WDA).

Monthly industrial Production indices

2010 based, SA-WDA changes in %



Legend: CZ: Manufacturing - (C1): Manufacture of food products and beverages - (C3): Electrical and electronic equipment; machine equipment - (C4): Manufacture of transport equipment - (C5): Other manufacturing
Sources: Insee, SSP, SOeS

Variation of the Industrial Production

2010 based, SA-WDA changes in %

	Dec. /	Nov. /	Q-o-Q change (1)	Year on year change (2)
NA : A10. (A17)	Nov.	Oct.		
BE: INDUSTRY	−0.3	1.2	0.3	0.7
CZ: Manufacturing	0.0	0.2	0.5	0.9
(C1): Manufacture of food products and beverages	0.0	0.1	−0.9	−4.1
(C2): Manufacture of coke and refined petroleum products	−9.5	19.3	−7.0	−10.1
(C3): Electrical and electronic equipment; machine equipment	1.4	−0.6	2.6	3.4
(C4): Manufacture of transport equipment	−4.6	1.4	1.3	7.5
(C5): Other manufacturing	0.7	−0.2	0.1	0.4
(DE): Mining and quarrying; energy; water supply; waste management	−1.9	5.9	−0.5	−0.1
FZ: CONSTRUCTION	4.5	0.0	1.1	0.7

(1) Last three months / three previous months

(2) Last three months / three same months of previous year

The codes correspond to the level of aggregation A 10 (A 17) of the "NA" aggregate classification based on NAF rev.2.

Sources: INSEE, SSP, SOeS

Variation of the Industrial Production

2010 based, SA-WDA changes in %

NA : A10, (A17), [A38 ou A64]	Dec. 2013	Dec. / Nov.	Nov. / Oct.	Quarter on quarter change
BE: INDUSTRY	99.2	-0.3	1.2	0.3
CZ: Manufacturing	99.4	0.0	0.2	0.5
(C1): Man. of food products and beverages	98.2	0.0	0.1	-0.9
(C2): Man. of coke and refined petroleum products	76.2	-9.5	19.3	-7.0
(C3): Electrical and electronic equipment; machine equipment	105.2	1.4	-0.6	2.6
[CI] Man. of computer, electronic and optical products	108.8	2.1	-1.6	5.2
[CJ] Man. of electrical equipment	100.1	3.2	-1.3	0.0
[CK] Man. of machinery and equipment n.e.c. (1)	106.3	0.3	0.4	2.5
(C4): Man. of transport equipment	99.7	-4.6	1.4	1.3
[CL1] Man. of motor vehicles, trailers and semi-trailers	94.7	3.6	3.5	5.7
[CL2] Man. of other transport equipment	105.3	-11.7	-0.3	-2.4
(C5): Other manufacturing	98.7	0.7	-0.2	0.1
[CB] Man. of textiles, wearing apparel, leather and related products	96.7	0.1	-0.7	1.6
[CC] Man. of wood and paper products; printing and reproduction of recorded media	90.3	0.7	2.0	-0.6
[CE] Man. of chemicals and chemical products	110.4	1.1	1.6	1.8
[CF] Man. of basic pharmaceutical products and pharmaceutical preparations	100.2	0.3	0.5	0.6
[CG] Man. of rubber and plastics products, and other non-metallic mineral products	96.4	1.5	1.6	0.3
[CH] Man. of basic metals and fabricated metal products, except machinery and equipment	96.3	0.6	-2.0	-0.8
[CM] Other manufacturing; repair and installation of machinery and equipment	101.5	0.3	-1.2	0.3
(DE): Mining and quarrying; energy; water supply; waste management	98.2	-1.9	5.9	-0.5
[BZ] Mining and quarrying	93.7	1.6	-4.0	-6.7
[DZ] Electricity, gas, steam and air-conditioning supply	96.6	-2.1	7.8	0.2
[EZ] Water supply; sewerage, waste management and remediation	111.1	-2.1	0.0	-2.3
FZ: CONSTRUCTION	101.2	4.5	0.0	1.1
MIGs (2)				
Capital goods	101.8	-1.1	-0.2	1.2
Intermediate goods	98.1	1.2	-0.1	0.4
Consumer durables	102.2	0.9	0.9	0.9
Consumer non-durables	99.5	0.2	-0.1	-0.4

(1) n.e.c. : not elsewhere classifiable

(2) Main industrial groupings: definition in Commission regulation EC of June 14th 2007

Sources: Insee, SSP, SOeS

In December 2013, output decreased in the manufacture of transport equipment (-4.6%)...

In particular, output decreased strongly in the manufacture of other transport equipment (-11.7%), while it increased in the manufacture of motor vehicles, trailers and semi-trailers (+3.6%).

... in « Mining and quarrying; energy; water supply; waste management » (-1.9%)...

Output went down in electricity, gas, steam and air-conditioning supply (-2.1%), due to the clement climate in December.

... as well as in the manufacture of coke and refined petroleum products (-9.5%).

Output decreased by 9.5% in the manufacture of coke and refined petroleum products, because of social movements in several units.

Output rebounded in other manufacturing (+0.7%)...

Output went up in the manufacture of rubber and plastics products, and other non-metallic mineral products (+1.5%), in the manufacture of basic metals and fabricated metal products, except machinery and equipment (+0.6%) and in the manufacture of chemicals and chemical products (+1.1%). It also increased in other manufacturing, repair and installation of machinery and equipment (+0.3%), in the manufacture of wood and paper products; printing and reproduction of recorded media (+0.7%) and in the manufacture of basic pharmaceutical products and pharmaceutical preparations (+0.3%).

... and in the manufacture of electrical and electronic equipment; machine equipment (+1.4%).

Output increased significantly in the manufacture of electrical equipment (+3.2%), in the manufacture of computer, electronic and optical products (+2.1%) and to a lesser extent in the manufacture of machinery and equipment n.e.c. (+0.3%).

• Revisions in November

Measure of variations' revisions

(in point %)

	Nov. / Oct.	Oct. / Sept.	Sept. / Aug.	Q3 2013 / Q2 2013	2012 / 2011
Industry (BE)	-0.11	0.10	-0.10	0.17	0.01
raw serie	0.10	-0.22	0.04	0.11	0.01
SA-WDA coefficient	-0.21	0.32	-0.14	0.06	0.00
Manufacturing (CZ)	0.00	0.10	-0.10	0.03	0.01
raw serie	0.08	-0.20	0.34	-0.06	0.00
SA-WDA coefficient	-0.08	0.30	-0.44	0.09	0.01

Note of reading: in the manufacturing, the SA-WDA evolution between October 2013 and November 2013 isn't revised; the revision of the raw serie (+0.08 point) annihilates the revision due to the new calculation of the SA-WDA (-0.08 point).

Sources: Insee, SSP, SOeS

Learn more:

- Complementary data (long series) and metadata (methodology, linked internet pages...) are available on the HTML page of this index: <http://www.insee.fr/en/themes/info-rapide.asp?id=10>
- Historical data are available on the BDM: [G950](#), [G951](#), [G952](#), [G953](#), [G963](#).
- Press contact: bureau-de-presse@insee.fr

Next issue: March 10 2014, 8:45 AM