

Informations *Rapides*

28 juin 2013 - n° 154



■ Turnover in the retail trade and personal services - April 2013

In April 2013, the sales volume went up in the trade and repair of motor vehicles and motorcycles and in household services

Every index in this issue is in volume, seasonally and working-day adjusted (SA-WDA).

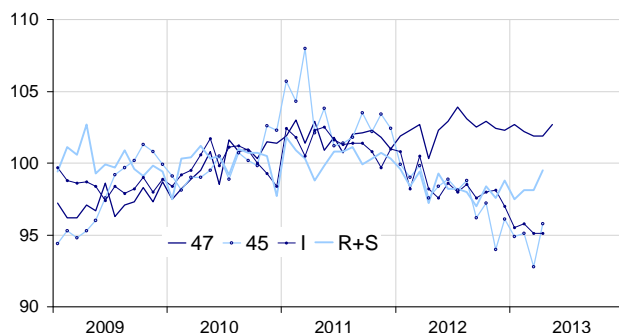
In April 2013, the sales volume upturned compared to March in the *trade and repair of motor vehicles and motorcycles* (+3.2% after -2.4 % in March). It also rose in *household services* (+1.4%) whereas it was stable in the *retail trade, except for motor vehicles and motorcycles* (0.0%) and in *accommodation and food service activities* (0.0%).

Over the last quarter (q-o-q), the sales volume fell off in *accommodation and food service activities* (-1.6%) and, to a lesser extent, in the *retail trade, except for motor vehicles and motorcycles* (-0.5%) and in the *trade and repair of motor vehicles and motorcycles* (-0.5%). On the contrary, it grew moderately in *household services* (+0.6%).

Year-on-year (y-o-y), the sales volume declined significantly in the *trade and repair of motor vehicles and motorcycles* (-4.3%) and in *accommodation and food services activities* (-3.7%). It was broadly steady in the *retail trade, except for motor vehicles and motorcycles* (+0.2%) and in *household services* (+0.2%).

Volume of sales in the retail trade and personal services

Turnover indices, SA-WDA volume, Base year 2010



Please note that the «retail trade, except for motor vehicles and motorcycles» chart (47) includes the early estimate for May 2013.
Source : INSEE

In May 2013, the sales volume in the retail trade is expected to rise (+0.8%).

Revisions

The evolution in April has been revised by -0.3 point in the *trade and repair of motor vehicles and motorcycles*. In the same period, the variation has been revised by -0.2 point in the *retail trade, except for motor vehicles and motorcycles* and has been confirmed in *accommodation and food service activities* and in *household services*.

Variation of the volume of sales in the retail trade and personal services

SA-WDA volume, Base year 2010

NACE Classification	Weight	Change in %			
		April/March	March/Feb.	q-o-q (1)	y-o-y (2)
47 Retail trade, except for motor vehicles and motorcycles	1000	0.0	-0.3	-0.5	0.2
471 Retail sale in non-specialized stores	369	-1.0	1.2	0.0	-0.8
472 to 477 Retail sale in specialized stores	573	0.6	-1.2	-0.7	1.0
478 and 479 Retail trade not in stores	58	0.5	-1.2	-0.5	-0.7
45 Trade and repair of motor vehicles and motorcycles	1000	3.2	-2.4	-0.5	-4.3
I Accommodation and food service activities	1000	0.0	-0.7	-1.6	-3.7
R+S Household services	1000	1.4	0.0	0.6	0.2
R Arts, entertainment and recreation	449	1.7	1.7	-0.1	0.1
S Other service activities	551	1.2	-1.4	1.2	0.4

(1) Quarter-on-quarter: last three months / three previous months.

(2) Year-on-year: last three months / three same months of the previous year.

Source: INSEE

Variation of the volume of sales in the retail trade : early estimate*

SA-WDA volume, Base year 2010

	Change in %	
	May 2013/ April 2013	May 2013/ May 2012
47 Retail trade, except for motor vehicles and motorcycles	0.8	0.4

* Econometric estimate from a set of sources available within 30 days after the end of the reference month

Source: INSEE