

Informations Rapides

31 mai 2013 - n° 130



■ Turnover in the retail trade and personal services - March 2013

In March 2013, the volume of sales declined in the trade and repair of motor vehicles and motorcycles and in accommodation and food service activities

Every index in this issue is in volume, seasonally and working-day adjusted (SA-WDA).

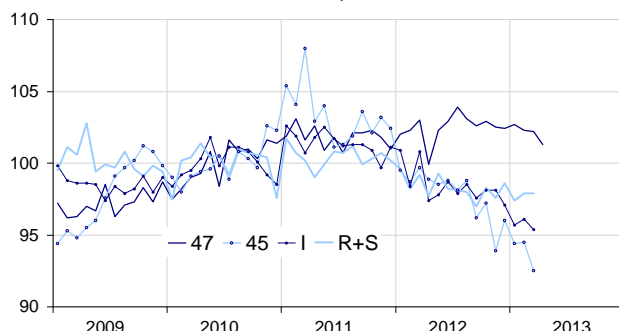
In March 2013, the volume of sales fell compared to February in the *trade and repair of motor vehicles and motorcycles* (–2.1%) and in *accommodation and food service activities* (–0.7%). It was broadly stable in the *retail trade, except for motor vehicles and motorcycles* (–0.1%) and was steady in *household services* (0.0%).

Over the first quarter 2013 (q-o-q), the volume of sales went down in *accommodation and food service activities* (–2.1%), in the *trade and repair of motor vehicles and motorcycles* (–2.0%) and, to a lesser extent, in *household services* (–0.4%). It was broadly stable in the *retail trade, except for motor vehicles and motorcycles* (–0.2%).

Over the year 2013, the volume of sales decreased in the *trade and repair of motor vehicles and motorcycles* (–5.5%, y-o-y), in *accommodation and food services activities* (–4.3%) and in *household services* (–1.3%). It was stable in the *retail trade, except for motor vehicles and motorcycles* (0.0%).

Volume of sales in the retail trade and personal services

Turnover indices, SA-WDA volume, Base year 2010



Please note that the «retail trade, except for motor vehicles and motorcycles» chart (47) includes the early estimate for April 2013.
Source : INSEE

In April 2013, the volume of sales in the retail trade is expected to decline (–0.9 %).

Revisions

The evolution in February has been revised by –0.5 point in the *trade and repair of motor vehicles and motorcycles*. In the same period, the variation has been revised by –0.1 point in *accommodation and food service activities and household services*. The volume of sales' variation has been confirmed in the *retail trade, except for motor vehicles and motorcycles*.

Variation of the volume of sales in the retail trade and personal services

SA-WDA volume, Base year 2010

NACE Classification	Weight	Change in %			
		March/ Feb.	Feb./ an.	q-o-q (1)	y-o-y (2)
47 Retail trade, except for motor vehicles and motorcycles	1000	–0.1	–0.4	–0.2	0.0
471 Retail sale in non-specialized stores	369	1.0	–0.2	–0.6	–0.8
472 to 477 Retail sale in specialized stores	573	–0.6	–0.5	0.2	0.6
478 and 479 Retail trade not in stores	58	–1.2	–0.3	–0.7	–0.9
45 Trade and repair of motor vehicles and motorcycles	1000	–2.1	0.1	–2.0	–5.5
I Accommodation and food service activities	1000	–0.7	0.4	–2.1	–4.3
R+S Household services	1000	0.0	0.5	–0.4	–1.3
R Arts, entertainment and recreation	449	1.7	–0.8	–1.6	–1.8
S Other service activities	551	–1.2	1.4	0.5	–0.9

(1) Quarter-on-quarter: last three months / three previous months.

(2) Year-on-year: last three months / three same months of the previous year.

Source: INSEE

Variation of the volume of sales in the retail trade : early estimate*

SA-WDA volume, Base year 2010

	Change in %	
	April 2013/ March 2013	April 2013/ April 2012
47 Retail trade, except for motor vehicles and motorcycles	–0.9	1.4

* Econometric estimate from a set of sources available within 30 days after the end of the reference month

Source: INSEE