

Informations *Rapides*



4 janvier 2011 - n° 4 **CONJONCTURE**

■ Turnover in the wholesale trade and business services - October 2011

In October 2011, the turnover fell in real estate activities and in information and communication

Every index in this issue is in value, seasonally and working-day adjusted.

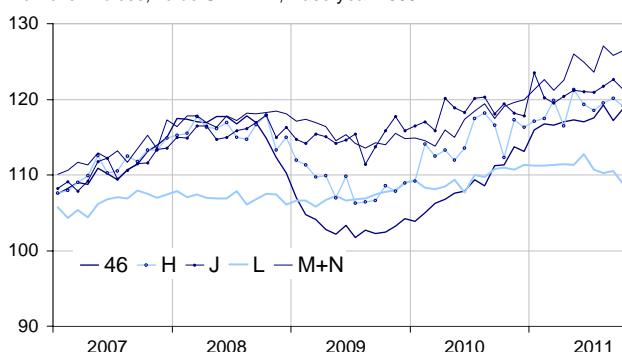
In October 2011, the turnover declined in *real estate activities* (–1.5 %), in *information and communication* (–1.1 %) and in *transportation and storage* (–0.8 %). On the contrary, it rose in the *wholesale trade* (+1.4 %) and in *business support activities* (+0.5 %)

Quarter on quarter (q-o-q), the turnover rose in *business support activities* (+1.3 %), in the *wholesale trade* (+0.9 %) and in *information and communication* (+0.7 %). Conversely, it declined in *real estate activities* (–1.6 %) and it was broadly stable in *transportation and storage* (–0.1 %).

Year on year (y-o-y), the turnover picked up by 7.3 % in the *wholesale trade* and by 6.5 % in *business support activities*. To a lesser extent, it also increased in *transportation and storage* (+3.3 %) and in *information and communication* (+2.2 %). It fell in *real estate activities* (–1.6 %).

Wholesale trade and business service

Turnover indices, value SA-WDA, Base year 2005



Source : INSEE

Revisions

The SA-WDA evolution in September has been revised by +0.4 point in *business support activities*. The

decrease, initially announced at –1.4 %, is corrected at –1.0 %. This correction is due to the coefficients SA-WDA's updating in the sector of *architectural and engineering activities*. In the same period, the SA-WDA evolution has been revised by +0.1 point in *real estate activities* and by –0.1 point in the *wholesale trade*. In the same period, the turnover's variation has been confirmed in *transportation and storage* and in *information and communication*.

Monthly turnover indices

SA-WDA value, Base year 2005

Classification NAF rev. 2	Weight	Change in %			
		Oct./ Sept.	Sept./ Aug.	q-o-q (1)	y-o-y (2)
46 Wholesale trade, except of motor vehicles and motorcycles	1000	1.4	–1.7	0.9	7.3
Wholesale on a fee or contract basis	166	1.1	–1.4	2.4	7.9
Wholesale of agricultural raw materials and live animals	62	4.7	–2.2	0.3	17.9
Wholesale of food, beverages and tobacco	183	5.3	–3.4	1.6	7.3
Wholesale of household goods	173	–0.8	–0.8	1.0	3.4
Wholesale of professional equipment goods	215	0.0	–0.3	0.9	5.4
Other specialised wholesale	193	0.1	–2.3	–0.7	8.3
H Transportation and storage	1000	–0.8	0.5	–0.1	3.3
J Information and communication	1000	–1.1	0.7	0.7	2.2
L Real estate activities	1000	–1.5	0.2	–1.6	–0.6
M+N Business support activities	1000	0.5	–1.0	1.3	6.5
M Professional, scientific and technical activities	626	0.8	–0.4	1.1	6.2
N Administrative and support service activities	374	0.2	–2.2	1.4	7.0

(1) Quarter-on-quarter: last three months / three previous months.

(2) Year-on-year: last three months / three same months of the previous year.

The codes correspond to different levels of aggregation of the classification NAF rev. 2.

Source: INSEE