

Informations *Rapides*

29 novembre 2013 - n° 278



■ Turnover in the wholesale trade and business services - September 2013

In September 2013, the turnover increased sharply in the transportation and storage

Every index in this issue is in value, seasonally and working-day adjusted (SA-WDA).

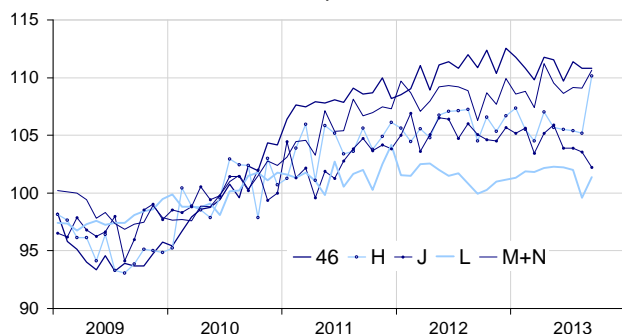
In September 2013, the turnover increased significantly in *transportation and storage* (+4.7%). It went up by +1.8% in *real estate activities*, and by +1.4% in *business support activities*. On the opposite, it declined in *information and communication* (−1.3%). It remained stable in the *wholesale trade, except for motor vehicles and motorcycles* (0.0%).

Over the last three months (q-o-q), the turnover decreased in *information and communication* (−1.7%), in *real estate activities* (−1.2%), and more moderately in *business support activities* (−0.2%). However, it went up in *transportation and storage* (+0.8%) and remained stable in the *wholesale trade, except for motor vehicles and motorcycles* (0.0%).

Over the year (y-o-y), the turnover declined in *information and communication* (−1.9%), and to a lesser extent in the *wholesale trade, except for motor vehicles and motorcycle* (−0.2%). On the other hand, it increased in *business support activities* (+1.4%), in *transportation and storage* (+0.6%) and in *real estate activities* (+0.2%).

Wholesale trade and business services

Turnover indices, SA-WDA value, Base year 2010



Source: INSEE

Revisions

The evolution in August has been revised by +0.6 point in *real estate activities*, by +0.4 point in *business support activities*, by +0.3 point in *information and communication*, by +0.2 point in *transportation and storage*, and by −0.1 point in the *wholesale trade, except for motor vehicles and motorcycles*.

Variation of the turnover in the wholesale trade and business services

SA-WDA value, Base year 2010

Nace classification	Weight	Change in %			
		Sept./Aug.	Aug./July	q-o-q (1)	y-o-y (2)
46 Wholesale trade, except for motor vehicles and motorcycles	1000	0.0	−0.5	0.0	−0.2
H Transportation and storage	1000	4.7	−0.2	0.8	0.6
J Information and communication	1000	−1.3	−0.3	−1.7	−1.9
L Real estate activities	1000	1.8	−2.4	−1.2	0.2
M+N Business support activities	1000	1.4	0.0	−0.2	1.4
M Professional, scientific and technical activities	579	1.9	−0.5	−0.7	1.1
N Administrative and support service activities	421	0.8	0.7	0.6	1.9

(1) Quarter-on-quarter: last three months / three previous months.

(2) Year-on-year: last three months / three same months of the previous year.

Source: INSEE