

■ Turnover in the wholesale trade and business services - August 2013

In August 2013, the turnover decreased in the wholesale trade and business services

Every index in this issue is in value, seasonally and working-day adjusted (SA-WDA).

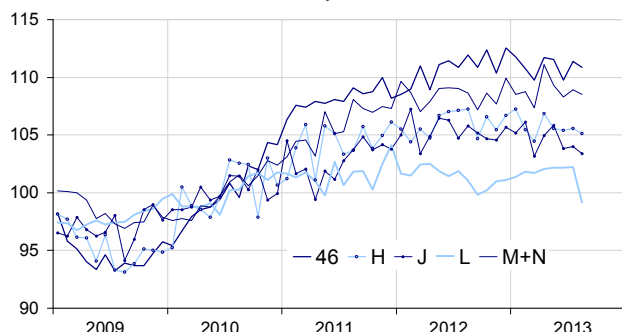
In August 2013, the turnover decreased significantly in *real estate activities* (–3.0%). To a lesser extent, it went down by –0.6% in *information and communication* and by –0.4% in the *wholesale trade, except for motor vehicles and motorcycles*, in *transportation and storage* and in *business support activities*.

Over the last three months (q-o-q), the turnover decreased in *information and communication* (–0.9%), in *real estate activities* (–0.8%), in *business support activities* (–0.6%), and more moderately in *transportation and storage* (–0.3%) and in the *wholesale trade, except for motor vehicles and motorcycles* (–0.3%).

Over the year (y-o-y), the turnover declined in *information and communication* (–1.8%), in *transportation and storage* (–1.7%), in the *wholesale trade, except for motor vehicles and motorcycles* (–0.7%). Moreover, it went down by –0.3% in *business support activities* and in *real estate activities*.

Wholesale trade and business services

Turnover indices, SA-WDA value, Base year 2010



Source : INSEE

Revisions

The evolution in July has been revised by +0.3 point in *business support activities*, by –0.2 point in *information and communication*, by +0.1 point in the *wholesale trade, except for motor vehicles and motorcycles*, and by –0.1 point in *real estate activities*. In the same period, the variation has been confirmed in *transportation and storage*.

Variation of the turnover in the wholesale trade and business services

SA-WDA value, Base year 2010

Nace classification	Weight	Change in %			
		Aug./ July	July/ June	q-o-q (1)	y-o-y (2)
46 Wholesale trade, except for motor vehicles and motorcycles	1000	–0.4	1.5	–0.3	–0.7
H Transportation and storage	1000	–0.4	0.2	–0.3	–1.7
J Information and communication	1000	–0.6	0.1	–0.9	–1.8
L Real estate activities	1000	–3.0	0.1	–0.8	–0.3
M+N Business support activities	1000	–0.4	0.6	–0.6	–0.3
M Professional, scientific and technical activities	579	–0.7	0.3	–1.1	–0.4
N Administrative and support service activities	421	0.1	1.0	0.0	–0.2

(1) Quarter-on-quarter: last three months / three previous months.

(2) Year-on-year: last three months / three same months of the previous year.

Source: INSEE