

# Informations *Rapides*

8 novembre 2013 - n° 257

**Main indicators**



## ■ Industrial Production Indices – September 2013

### In September 2013, manufacturing output went down (–0.7%)

In September 2013, **manufacturing output** went down (–0.7%, after +0.9% in August). Output decreased as well in **industrial production as a whole** (–0.5%, after +0.7% last month).

#### During the last quarter, manufacturing output decreased (–1.1%)...

During the last quarter (q-o-q), output declined in the manufacturing sector (–1.1%), as well as in industry as a whole (–1.4%).

Output decreased in *other manufacturing* (–0.8%), in the *manufacture of transport equipment* (–2.0%), and in the *manufacture of electrical and electronic equipment; machine equipment* (–0.9%). Moreover, it slumped by 10.6% in the *manufacture of coke and refined petroleum products*.

#### ...and was lower than its last year's level by 2.0%.

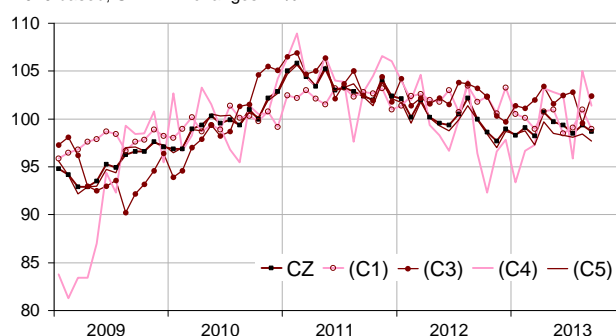
Manufacturing output dropped by 2.0% (y-o-y).

Output went down significantly in *other manufacturing* (–2.3%), in the *manufacture of electrical and electronic equipment; machine equipment* (–1.9%), and in the *manufacture of food products and beverage* (–2.3%). It decreased dramatically in the *manufacture of coke and refined petroleum products* (–9.0%). On the opposite, output improved in the *manufacture of transport equipment* (+0.7%).

*Please note: all the series are adjusted for seasonal variations (SA) and the number of working days (WDA).*

#### Monthly industrial Production indices

2010 based, SA-WDA changes in %



Legend: CZ: Manufacturing - (C1): Manufacture of food products and beverages - (C3): Electrical and electronic equipment; machine equipment - (C4): Manufacture of transport equipment - (C5): Other manufacturing

Sources: Insee, SSP, SOeS

#### Variation of the Industrial Production

2010 based, SA-WDA changes in %

| NA : A10, (A17)  | Sept.<br>/ Aug. | Aug.<br>/ July | Q-o-Q<br>change<br>(1) | Year on<br>year<br>change<br>(2) |
|--|-----------------|----------------|------------------------|----------------------------------|
| <b>BE: INDUSTRY</b>  | <b>–0.5</b>     | <b>0.7</b>     | <b>–1.4</b>            | <b>–1.4</b>                      |
| <b>CZ: Manufacturing</b>   | <b>–0.7</b>     | <b>0.9</b>     | <b>–1.1</b>            | <b>–2.0</b>                      |
| (C1): Manufacture of food products and beverages                   | –2.0            | 1.9            | –0.4                   | –2.3                             |
| (C2): Manufacture of coke and refined petroleum products           | –2.1            | –5.0           | –10.6                  | –9.0                             |
| (C3): Electrical and electronic equipment; machine equipment       | 2.8             | –3.1           | –0.9                   | –1.9                             |
| (C4): Manufacture of transport equipment                           | –3.4            | 9.5            | –2.0                   | 0.7                              |
| (C5): Other manufacturing  | –0.7            | 0.3            | –0.8                   | –2.3                             |
| (DE): Mining and quarrying; energy; water supply; waste management | 0.4             | –0.3           | –2.6                   | 1.7                              |
| <b>FZ: CONSTRUCTION</b>  | <b>–0.8</b>     | <b>0.6</b>     | <b>1.3</b>             | <b>–1.3</b>                      |

(1) Last three months / three previous months

(2) Last three months / three same months of previous year

The codes correspond to the level of aggregation A 10 (A 17) of the "NA" aggregate classification based on NAF rev.2.

Sources: Insee, SSP, SOeS

## Variation of the Industrial Production

2010 based, SA-WDA changes in %

| NA : A10, (A17), [A38 ou A64]   | Sept.<br>2013 | Sept.<br>/ Aug. | Aug.<br>/ July | Quarter<br>on<br>quarter<br>change |
|---|---------------|-----------------|----------------|------------------------------------|
| <b>BE: INDUSTRY</b>   | <b>98.5</b>   | <b>-0.5</b>     | <b>0.7</b>     | <b>-1.4</b>                        |
| <b>CZ: Manufacturing</b>  | <b>98.7</b>   | <b>-0.7</b>     | <b>0.9</b>     | <b>-1.1</b>                        |
| (C1): Man. of food products and beverages   | 99.0          | -2.0            | 1.9            | -0.4                               |
| (C2): Man. of coke and refined petroleum products                                       | 81.1          | -2.1            | -5.0           | -10.6                              |
| (C3): Electrical and electronic equipment; machine equipment                            | 102.4         | 2.8             | -3.1           | -0.9                               |
| [CI] Man. of computer, electronic and optical products                                  | 103.3         | 4.6             | -2.2           | -2.2                               |
| [CJ] Man. of electrical equipment   | 96.6          | 2.8             | -5.2           | -0.5                               |
| [CK] Man. of machinery and equipment n.e.c. (1)   | 105.5         | 1.9             | -2.4           | -0.3                               |
| (C4): Man. of transport equipment   | 101.4         | -3.4            | 9.5            | -2.0                               |
| [CL1] Man. of motor vehicles, trailers and semi-trailers                                | 86.5          | -7.0            | 22.4           | -4.7                               |
| [CL2] Man. of other transport equipment   | 118.2         | -0.3            | 0.3            | 0.2                                |
| (C5): Other manufacturing   | 97.7          | -0.7            | 0.3            | -0.8                               |
| [CB] Man. of textiles, wearing apparel, leather and related products                    | 95.8          | 2.2             | -5.2           | -2.6                               |
| [CC] Man. of wood and paper products; printing and reproduction of recorded media       | 89.3          | -3.0            | 3.8            | -1.3                               |
| [CE] Man. of chemicals and chemical products  | 106.3         | 1.3             | -1.1           | -1.3                               |
| [CF] Man. of basic pharmaceutical products and pharmaceutical preparations              | 99.5          | 0.5             | -0.1           | -1.3                               |
| [CG] Man. of rubber and plastics products, and other non-metallic mineral products      | 94.3          | -0.5            | 0.7            | -1.3                               |
| [CH] Man. of basic metals and fabricated metal products, except machinery and equipment | 96.8          | -2.8            | 2.8            | 0.6                                |
| [CM] Other manufacturing; repair and installation of machinery and equipment            | 100.7         | 0.9             | -2.8           | -1.4                               |
| (DE): Mining and quarrying; energy; water supply; waste management                      | 97.7          | 0.4             | -0.3           | -2.6                               |
| [BZ] Mining and quarrying   | 96.0          | -5.6            | 0.1            | 4.6                                |
| [DZ] Electricity, gas, steam and air-conditioning supply                                | 96.1          | 0.8             | -0.2           | -3.7                               |
| [EZ] Water supply; sewerage, waste management and remediation                           | 109.6         | 0.0             | -1.2           | 1.2                                |
| <b>FZ: CONSTRUCTION</b>   | <b>96.5</b>   | <b>-0.8</b>     | <b>0.6</b>     | <b>1.3</b>                         |
| <b>MIGs (2)</b>   |               |                 |                |                                    |
| Capital goods   | 101.7         | -0.4            | 1.2            | -1.3                               |
| Intermediate goods  | 96.1          | -1.3            | 1.4            | -0.2                               |
| Consumer durables   | 99.0          | 2.7             | -4.1           | -1.9                               |
| Consumer non-durables   | 100.2         | -0.4            | 0.5            | -1.1                               |

(1) n.e.c.: not elsewhere classifiable

(2) Main industrial groupings : definition in Commission regulation EC of 14 June 2007

Sources : Insee, SSP, SOeS

## In September 2013, output decreased in other manufacturing (-0.7%)...

Output went down in the manufacture of basic metals and fabricated metal products, except machinery and equipment (-2.8%), in the manufacture of wood and paper products; printing and reproduction of recorded media (-3.0%), and, to a lesser extent, in the manufacture of rubber and plastics products, and other non-metallic mineral products (-0.5%). On the contrary, output improved in the manufacture of basic pharmaceutical products and pharmaceutical preparations (+0.5%), in other manufacturing, repair and installation of machinery and equipment (+0.9%), in the manufacture of chemicals and chemical products (+1.3%) and in the manufacture of textiles, wearing apparel, leather and related products (+2.2%).

## ... as well as in the manufacture of transport equipment (-3.4%)...

Output plummeted in the manufacture of motor vehicles, trailers and semi-trailers (-7.0%) and remained more or less in the manufacture of other transport equipment (-0.3%).

## ... in the manufacture of coke and refined petroleum products (-2.1%)...

Output went down by 2.1% in the manufacture of coke and refined petroleum products.

## ... and in the manufacture of food products and beverages (-2.0%).

Output decreased by 2.0% in the manufacture of food products and beverages.

## Output improved in the manufacture of electrical and electronic equipment; machine equipment (+2.8%).

Output rebounded in the manufacture of computer, electronic and optical products (+4.6%), in the manufacture of electrical equipment (+2.8%), as well as in the manufacture of machinery and equipment n.e.c. (+1.9%).

### • Revisions in August

#### Measure of variations' revisions

(in point %)

|                           | Aug.<br>/ July | July<br>/ June | June<br>/ May | Q2 2013<br>/ Q1 2013 | 2012<br>/ 2011 |
|---------------------------|----------------|----------------|---------------|----------------------|----------------|
| <b>Industry (BE)</b>      | <b>0.51</b>    | <b>-0.10</b>   | <b>0.01</b>   | <b>0.16</b>          | <b>-0.06</b>   |
| raw serie                 | 0.41           | -0.10          | -0.04         | 0.11                 | -0.03          |
| SA-WDA coefficient        | 0.10           | 0.00           | 0.05          | 0.05                 | -0.03          |
| <b>Manufacturing (CZ)</b> | <b>0.61</b>    | <b>-0.09</b>   | <b>0.00</b>   | <b>0.26</b>          | <b>-0.07</b>   |
| raw serie                 | 0.50           | -0.19          | -0.06         | 0.05                 | -0.06          |
| SA-WDA coefficient        | 0.11           | 0.10           | 0.06          | 0.21                 | -0.01          |

Note of reading: in the manufacturing, the SA-WDA evolution between August 2013 and September 2013 is revised by +0.61 point: 0.50 is due to the raw serie's revision and 0.11 to the new calculation of the SA-WDA.

### Learn more:

- Complementary data (long series) and metadata (methodology, linked internet pages...) are available on the HTML page of this index: <http://www.insee.fr/en/themes/info-rapide.asp?id=10>
- Historical data are available on the BDM: [G950](#), [G951](#), [G952](#), [G953](#), [G963](#).
- Press contact: [bureau-de-presse@insee.fr](mailto:bureau-de-presse@insee.fr)

Next issue: December 10 2013, 8:45 AM